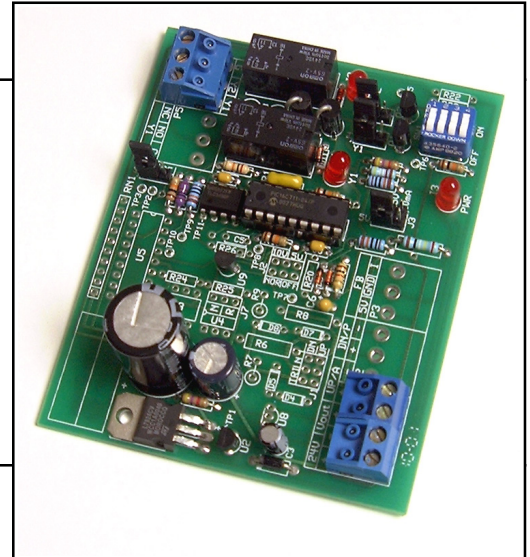


FEATURES

- 8 Selectable ANALOG Voltage/Current Input Signal Ranges
- Floating Point Output (Two Relay Contacts)
- DIP Switch Selectable Rates of Change (9 ranges available)
- Custom Rates of Change Available
- Electrically Isolated Output
- Power (LED) Indicator
- No Wrap Around
- Manual Override

APPLICATIONS

- Electric Actuator Control



PRODUCT DESCRIPTION

The AFP allows an analog signal to control a floating point actuator. AFP converts an analog signal into two relay contact outputs (one increase/one decrease).

The AFP's isolated floating point output can be controlled by any one of eight analog input signal ranges (using offset jumper).

On a loss of power, the AFP's output relays will be

open, and no signal will be generated. The actuator will remain at the last commanded position unless it is "spring return".

An LED indicates power to the AFP. The output rate of change (nine ranges, in three versions) is DIP switch selectable.

Custom rates of change are available upon request.

ORDERING INFORMATION

Specify: AFP Version 1 _____ (30, 60, or 90 second timing) or

Version 2 _____ (120, 150, or 180 second timing) or

Version 3 _____ (14, 16.5, or 19 second timing)

SPECIFICATIONS

Electrical Requirements

Power Supply:

Supply Voltage	24 VDC or 24 VAC, +/- 10%, 50 or 60 Hz
Supply Current (Power Consumption)	105 mA maximum without use of 24 VDC auxiliary output 190 mA maximum with use of 24 VDC auxiliary output

Input:

Analog:

Ranges (Jumper Selectable)	0-5 VDC	0-15 VDC
	0-10 VDC	0-20 mA

With Offset Jumper ON:	1-5 VDC	3-15 VDC
	2-10 VDC	4-20 mA

Impedances (Nominal)	Voltage/ 10,000 ohms nominal
	Current/ 250 ohms nominal

Output:

Floating Point:	Two relay contact outputs (Increase/Decrease)
Rates of change (DIP switch selectable):	
Version 1	30, 60, or 90 seconds.
Version 2	120, 150, or 180 seconds
Version 3	14, 16.5 or 19 seconds
Output Accuracy	2% Full Scale @ 32 to 120°F and room temperature
Regulated Power Output (for user):	24 VDC, 48mA maximum

Mechanical Requirements

Relay Contacts:

Type	Form C, Gold-clad Silver
Rating	2 amp maximum resistive @ 24V
Electrical Life	100,000 operations
Mechanical Life	1 million operations

Connections:

Wire Size	Up to one 14 gauge maximum
Terminal Type	Plug-in Blocks with 5mm pin spacing. Accepts up to one 14 AWG wire size

Dimensions 4.00" W x 3.45" L x 1.15" H

Weight 1.5 oz.

Mounting: Furnished with 4.75" L x 3.25" W snap track

Environmental Requirements

Operating Temperature	32 to 120 degrees F
Storage Temperature	-20 to 150 degrees F
Operating Humidity	10% to 95% non-condensing

Specifications may change without notice to improve product performance.

If you have a different application, please call and discuss your needs with ICC Sales