

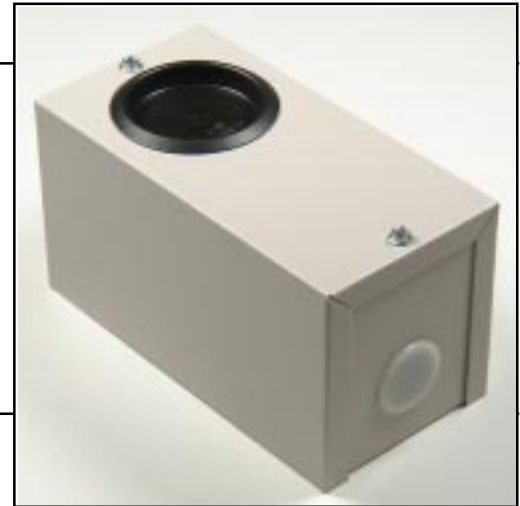


### FEATURES

- Compact size - 6" long x 3" wide x 3" high
- Rugged 20 ga. Metal Construction
- Powder Coat Finish (Durable baked-on protection)
- Front opening for viewing gauge
- Two (2) end openings sized to accept 1/2" EMT fittings for wiring connections

### APPLICATIONS

- Interface Housing
- Enclosure protection for any small Building Automation System or HVAC component
- Custom versions available



### PRODUCT DESCRIPTION

The ENC1 is a 20 gauge metal enclosure designed to hold ACT control interfaces or any small Building Automation Control or HVAC component. Made with 2" diameter opening in cover to view gauge, and two 7/8" diameter openings in the base ends (accepts 1/2" EMT fitting) for control and power wiring connection, the ENC1 is a reliable safeguard for vital control components. ENC1 is equipped with plastic snap-in covers for all openings.

ENC1 features a powder coat finish, an organic polymer powder that flows uniformly under high temperature to cover and seal all enclosure surfaces.

### ORDERING INFORMATION

Specify: ENC1  
(see "Accessory" price list)

### SPECIFICATIONS

#### Electrical Provisions

Electrical Connections

Base has two 7/8" inch holes in the ends to accept 1/2 EMT conduit fitting for control and power wiring.

#### Mechanical Requirements

Mounting Provisions - Base  
Interface

Base has two 3/16" holes for mounting with screw or bolts. Double faced tape for securing interface snap track in enclosure (provided). Adhesive foam stop (Part # HW017) for holding interface in snaptrack (provided).

Finish

Light Gray Powder Coat finish (baked-on).

Weight

16.8 oz.

Dimensions

6.12" L x 3.05" W x 3.3" H.

*Specifications may change without notice to improve product design or function.*