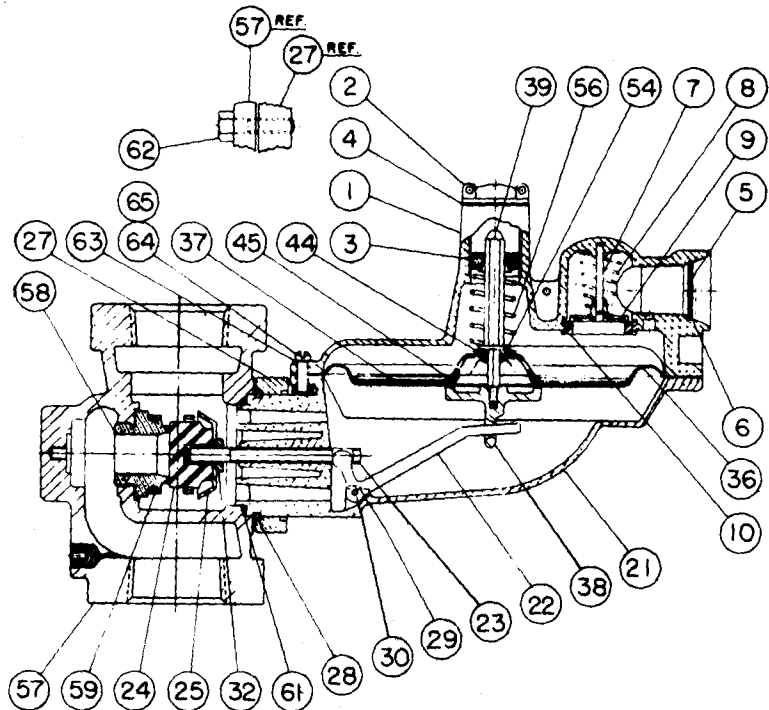


Parts List

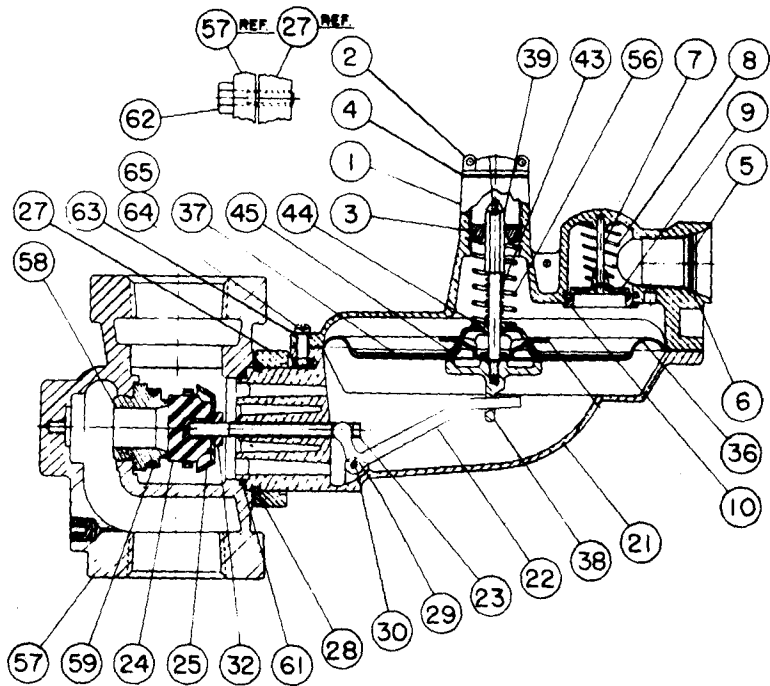
B-34 Series
Service Regulators

Models SN, SR, SNHP, SRHP

**B-34SN
B-34SNHP**



**B-34SR
B-34SRHP**



| ITEM NO. | PART NO. | QUANTITY | | | DESCRIPTION |
|----------|--------------------------------------|----------|------|-------|-----------------------------------------------------------------------------------------------------------------|
| | | SRHP | SNHP | SR SN | |
| 1 | 753104 753107 753127 753130 | 1 | 1 | 1 | Upper Diaphragm Case - Specify Vent Pipe Size: Vent - 1/4" Pipe Vent - 1/4" Pipe/H.P. Vent - 3/8" Pipe |
| | 753154 753157 753204 753207 | | 1 | 1 | Vent - 1/2" Pipe/H.P. Vent - 3/4" Pipe (Standard) Vent - 3/4" Pipe/H.P. (Standard) Vent - 1" Pipe |
| 2 | 760053 760055 | 1 | 1 | 1 | Vent - 1" Pipe/H.P. Seal Cap Seal Cap |
| 3 | 760215 | | 1 | 1 | Adjustment Screw - Delrin (For inches W.C. Outlet Press.) |
| | 760217 | 1 | 1 | | Adjustment Screw - Aluminum (For PSIG Outlet Press.) |
| 4 | 765773 | 1 | 1 | 1 | Seal Cap Gasket NOTE: For Indoor Installation of Regulator, use Seal Cap Gasket, P/N (Leak-Proof Seal) |
| 5 | 762935 762933 | 1 | 1 | 1 | Vent Screen - Specify: Wire Mesh (For all Vents Except 1") Wire Mesh (For 1" Vent Only) |
| 6 | 755727 755791 | 1 | 1 | 1 | Vent Screen Ret. Ring - Specify: (For All Vents Except 1") (For 1" Vent Only) |
| 7 | 754806 754834 | 1 | 1 | 1 | Vent Valve Disc Pin - Specify: (For All Vents Except 1") (For 1" Vent Only) |
| 8 | 762601 | 1 | 1 | 1 | Vent Valve Spring - 1/2 oz. |
| 9 | 765181 | 1 | 1 | 1 | Vent Valve Disc |
| 10 | 765685 | 1 | 1 | 1 | Vent Valve Seat |
| 21 | 752124 | 1 | 1 | 1 | Lower Diaphragm Case - 4:1 Ratio |
| 22 | 761231 | 1 | 1 | 1 | Valve Linkage Lever - 4:1 Ratio |
| 23 | 754021 | 1 | 1 | 1 | Valve Stem - Aluminum |
| 24 | 765201 | 1 | 1 | 1 | Valve Seat - Buna "N" 75-85 Duro |
| 25 | 761721 | 1 | 1 | 1 | Deflector |
| 27 | 751913 | 1 | 1 | 1 | Valve Body Ret. Plate - Aluminum |
| 28 | 755725 | 1 | 1 | 1 | Retainer Plate Snap Ring |
| 29 | 755141 | 2 | 2 | 2 | Valve Linkage Pin Screw |
| 30 | 754831 | 1 | 1 | 1 | Valve Linkage Pin |
| 32 | 754085 | 1 | 1 | 1 | Valve Stem Adapter |
| 36 | 766121 | 1 | 1 | 1 | Dia. - .028 Nylon Fab. w/Buna "N" |
| 37 | 761025 | 1 | 1 | 1 | Upper Diaphragm Plate |
| 38 | 756043 | 1 | 1 | 1 | Lower Diaphragm Plate |
| 39 | 754301 754303 | 1 | | 1 | Stop Stem Stop Stem |
| 43 | 762101 | 1 | 1 | | Relief Spring 7" W.C. Above Set |
| 44 | 754905 | 1 | 1 | 1 | Stop Stem Guide Bushing |
| 45 | 761661 761663 | 1 | 1 | 1 | Relief Cap Relief Cap |
| 54 | 755801 | | 1 | 1 | Diaphragm Plate Washer |
| 56 | 762111 762117 | | 1 | 1 | Adjustment Spring - Specify: Brown 4.5 - 5.5" W.C. D. Green 5.0 - 7.0" W.C. |

| ITEM NO. | PART NO. | QUANTITY | | | | DESCRIPTION | |
|----------|----------|----------|------|----|----|------------------------------------------------------|---------------------------------------------------------|
| | | SRHP | SNHP | SR | SN | | |
| 57 | 762119 | | | 1 | 1 | L. Green 5.5 - 8.0" W.C. | |
| | 762123 | | | 1 | 1 | Black 7.0 - 11.0" W.C. | |
| | 762127 | | | 1 | 1 | Blue 8.0 - 12.0" W.C. | |
| | 762129 | | | 1 | 1 | Silver 11.0 - 16.0" W.C. | |
| | 762131 | 1 | 1 | | | Yellow 1.1 - 1.5 PSIG | |
| | 762135 | 1 | 1 | | | Red 1.3 - 2.0 PSIG | |
| | 762137 | 1 | 1 | | | White 1.75 - 2.5 PSIG | |
| | 762025 | 1 | 1 | | | Red/Gray .75 - 1.1 PSIG | |
| | | | 1 | 1 | 1 | 1 | Valve Body - Specify Type & Size: |
| | | | | | | | Straight |
| 58 | 750604 | | | | | 1 1/4 x 1 1/4 NPT | |
| | 750607 | | | | | 1 1/4 x 1 1/4 NPT w/1/8 NPT Pipe Plug | |
| | 750627 | | | | | 1 1/4 x 1 1/2 NPT | |
| | 750630 | | | | | 1 1/4 x 1 1/2 NPT w/1/8 NPT Pipe Plug | |
| | 750654 | | | | | 1 1/4 x 2 NPT | |
| | 750657 | | | | | 1 1/4 x 2 NPT w/1/8 NPT Pipe Plug | |
| | 750676 | | | | | 1 1/2 x 1 1/2 NPT | |
| | 750680 | | | | | 1 1/2 x 1 1/2 NPT w/1/8 NPT Pipe Plug | |
| | 750704 | | | | | 1 1/2 x 2 NPT | |
| | 750707 | | | | | 1 1/2 x 2 NPT w/1/8 NPT Pipe Plug | |
| | 750726 | | | | | 2 x 2 NPT | |
| | 750730 | | | | | 2 x 2 NPT w/1/8 NPT Pipe Plug | |
| | | | | | | Flanged - 125 Lb. | |
| | | 750754 | | | | | 2" ASA |
| | | 750757 | | | | | 2" ASA With 1/8 NPT Pipe Plug |
| | | 750804 | | | | | 3" ASA |
| | | 750807 | | | | | 3" ASA With 1/8 NPT Pipe Plug |
| | | 750777 | | | | | 2" ASA Short Flanged - 125 Lb. |
| | | 750780 | | | | | 2" ASA With 1/8 NPT Pipe Plug - Short Flanged - 125 Lb. |
| | | | 1 | 1 | 1 | 1 | Orifice - Specify: |
| | | | | | | Straight - Brass | |
| | 758101 | | | | | 1/4 Dia. | |
| | 758104 | | | | | 3/8 Dia. | |
| | 758107 | | | | | 1/2 Dia. | |
| | 758110 | | | | | 5/8 Dia. | |
| | 758113 | | | | | 3/4 Dia. | |
| | 758117 | | | | | 7/8 Dia. | |
| | | | | | | Tapered - Brass | |
| | 758151 | | | | | 1/4 x 3/8 Dia. | |
| | 758154 | | | | | 5/16 x 3/8 Dia. | |
| | 758157 | | | | | 3/8 x 1/2 Dia. | |
| | 758160 | | | | | 1/2 x 5/8 Dia. | |
| | 758163 | | | | | 5/8 x 3/4 Dia. | |
| | 758166 | | | | | 3/4 x 7/8 Dia. | |
| | 758169 | | | | | 7/8 x 1 Dia. | |
| 59 | 761761 | 1 | 1 | 1 | 1 | Loading Ring | |
| 61 | 765651 | 1 | 1 | 1 | 1 | Valve Body Gasket | |
| 62 | 755381 | 2 | 2 | 2 | 2 | Retainer Plate Screw Hex Hd. - Steel | |
| 63 | | 1 | 1 | 1 | 1 | 5/16-18 x 1 1/4 Lg. Cad. Plate | |
| | | | | | | Curved Regulator Plate - As Silk Screened & Embossed | |
| 64 | 769203 | | | | | Case Screw - Fillister Hd. | |
| 65 | 755251 | 8 | 8 | 8 | 8 | #12-24 x 1 1/16 Lg. - Cad. Pl. Steel | |
| | 755661 | 8 | 8 | 8 | 8 | Case Screw Nut - Square #12-24 - Cad. Pl. Steel | |
| | | | | | | Special Tools | |
| | 799051 | | | | | Spring Adjusting Wrench | |
| | 799081 | | | | | Loading Ring Positioning Tool | |
| | 799021 | | | | | Thin Wall Orifice Socket | |