

B6600S-400, 2-Way, Characterized Control Valve

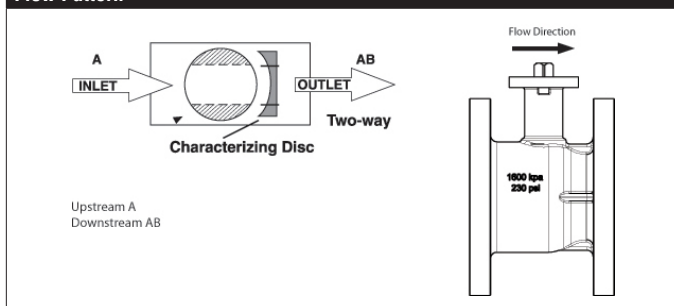
Stainless Steel Ball and Stem



Technical Data

| | |
|-----------------------------------|--------------------------------------|
| Service | chilled, hot water, up to 60% glycol |
| Flow Characteristic | equal percentage |
| Controllable Flow Range | 75° |
| Size [mm] | 6" [150] |
| End Fitting | Pattern to mate with ANSI 125 flange |
| Body | cast iron - GG25 |
| Ball | stainless steel |
| Stem | stainless steel |
| Stem Packing | EPDM (lubricated) |
| Seat | Teflon® PTFE |
| Seat O-ring | EPDM (lubricated) |
| Body Pressure Rating [psi] | ANSI 125, standard class B |
| ANSI Class | ANSI 125, standard class B |
| Number of Bolt Holes | 8 |
| Media Temperature Range (Water) | 0°F to 250°F [-18°C to 120°C] |
| Max Differential Pressure (Water) | 50 psi (345 kPa) |
| Close-Off Pressure | 100 psi |
| Cv | 400 |
| Weight | 90.4 lb [41 kg] |
| Leakage | 0% for A to AB |
| Servicing | maintenance free |

Flow Pattern



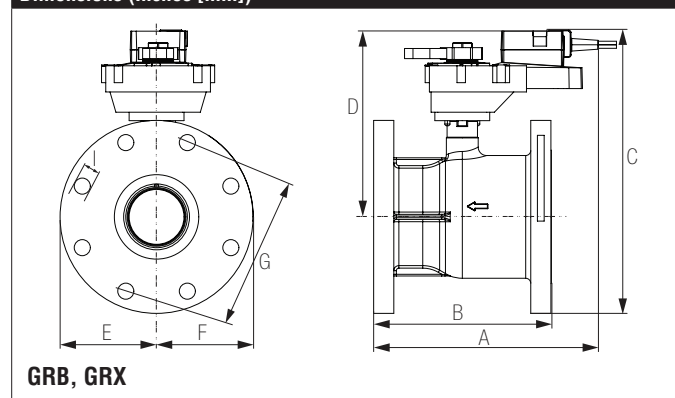
Application

This valve is typically used in air handling units on heating or cooling coils, and fan coil unit heating or cooling coils. Some other common applications include Unit Ventilators, VAV box re-heat coils and bypass loops. This valve is suitable for use in a hydronic system with variable or constant flow.

Suitable Actuators

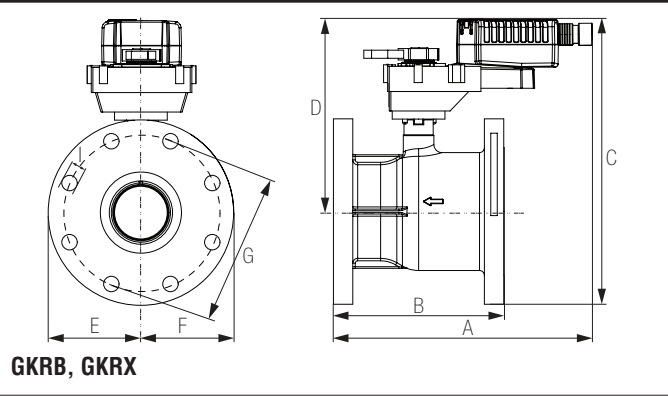
| | Non-Spring | Electronic Fail-Safe |
|------------|------------|----------------------|
| B6600S-400 | GRB(X) | GKRB(X) |

Dimensions (Inches [mm])



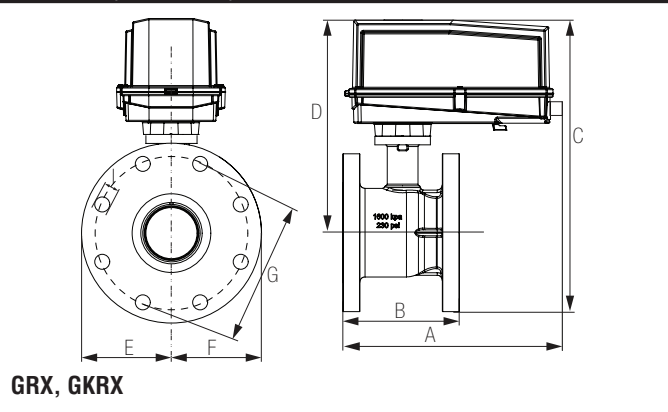
| A | B | C | D | E | F | G | I |
|----------------|----------------|----------------|---------------|------------|---|---------------|---------------|
| 15.3" [388] | 12.4" [315] | 15.4" [391] | 9.5" [241] | 5.5" [140] | | 9.5" [241] | 0.88" [22] |

Dimensions (Inches [mm])



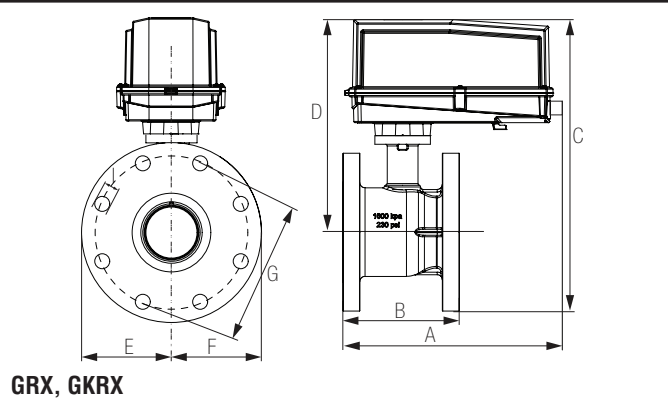
| A | B | C | D | E | F | G | I |
|-------|-------|-------|-------|------------|---|-------|-------|
| 15.3" | 12.4" | 15.8" | 9.8" | 5.5" [140] | | 9.5" | 0.88" |
| [388] | [315] | [401] | [248] | | | [241] | [22] |

Dimensions (Inches [mm])



| A | B | C | D | E | F | G | I |
|-------|-------|---------|-------|------------|---|-------|-------|
| 19" | 12.4" | 18.49" | 9.5" | 5.5" [140] | | 9.5" | 0.88" |
| [483] | [315] | [469.6] | [241] | | | [241] | [22] |

Dimensions (Inches [mm])



| A | B | C | D | E | F | G | I |
|-------|-------|---------|-------|------------|---|-------|-------|
| 19" | 12.4" | 18.49" | 9.5" | 5.5" [140] | | 9.5" | 0.88" |
| [483] | [315] | [469.6] | [241] | | | [241] | [22] |

GRX24-3

On/Off Floating Point, Non-Spring Return, 24 V



Technical Data

| | |
|-------------------------------|--|
| Power Supply | 24 VAC \pm 20%, 50/60 Hz, 24 VDC \pm 10% |
| Power Consumption Running | 4 W |
| Power Consumption Holding | 2 W |
| Transformer Sizing | 6 VA (class 2 power source) |
| Electrical Connection | 3 ft, 18 GA plenum rated cable with 1/2" conduit connector protected NEMA 2 (IP54) |
| Overload Protection | electronic throughout 0° to 95° rotation |
| Operating Range Y | on/off, floating point |
| Input Impedance | 600 Ω |
| Angle of Rotation | 90°, adjustable with mechanical stop |
| Direction of Rotation (Motor) | reversible with built-in switch |
| Position Indication | reflective visual indicator (snap on) |
| Manual Override | external push button |
| Running Time (Motor) | 150 sec constant, independent of load |
| Humidity | 5 to 95% RH non-condensing |
| Ambient Temperature Range | -22°F to +122°F [-30°C to +50°C] |
| Storage Temperature Range | -40°F to +176°F [-40°C to +80°C] |
| Housing | NEMA 2, IP54, UL enclosure type 2 |
| Housing Material | UL94-5VA |
| Agency Listings† | cULus acc. to UL60730-1A/-2-14, CAN/CSA E60730-1:02, CE acc. to 2004/108/EC and 2006/95/EC |
| Noise Level (Motor) | <45 dB (A) |
| Servicing | maintenance free |
| Quality Standard | ISO 9001 |
| Weight | 3.4 lbs [1.55 kg] |

Wiring Diagrams

✂️ INSTALLATION NOTES

- (A) Actuators with appliance cables are numbered.
- 1 Provide overload protection and disconnect as required.
- 3 Actuators may also be powered by 24 VDC.
- 6 Actuators Hot wire must be connected to the control board common. Only connect common to neg. (-) leg of control circuits. Terminal models (-T) have no-feedback.
- 11 Actuators may be connected in parallel if not mechanically linked. Power consumption and input impedance must be observed.
- Meets cULus requirements without the need of an electrical ground connection.

WARNING! LIVE ELECTRICAL COMPONENTS!
During installation, testing, servicing and troubleshooting of this product, it may be necessary to work with live electrical components. Have a qualified licensed electrician or other individual who has been properly trained in handling live electrical components perform these tasks. Failure to follow all electrical safety precautions when exposed to live electrical components could result in death or serious injury.

