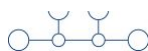
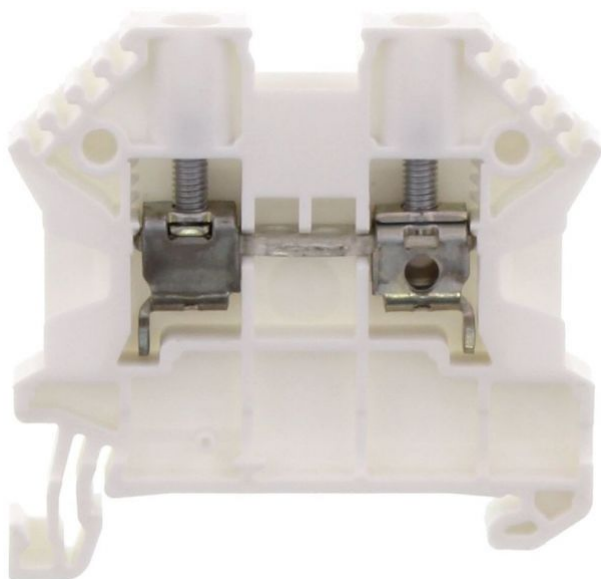


17104.7

SRK 4/2A WH

SRK 4/2A WH



M3



ERC



Feed-through terminal, Screw connection, Mounting type: Mounting rail TS 35/7.5, Rated cross-section: 4 mm<sup>2</sup>, Width: 6 mm, Colour: White

## Business data

Product description	Feed-through terminal
Explosion-proof version (EEx e)	✓
Packaging unit	100
Quantity unit	PC
Weight per piece (not including packaging)	8.5
Weight per piece (including packaging)	9.08
Unit of weight	G
Customs number	85369010
Country of origin	DE

© CONTA-CLIP Verbindungstechnik GmbH | Otto-Hahn-Str. 7 | D-33161 Hövelhof  
 Fon +49 (0) 52 57.98 33-0 | Fax +49 (0) 52 57.98 33-33 | E-Mail info@conta-clip.de | conta-clip.de

Creation date 16.12.2020 05:18:22  
 Subject to technical modifications

17104.7

SRK 4/2A WH

SRK 4/2A WH

## Technical Data

---

### Dimensions

---

Length	48 mm
Width	6 mm
Height TS 35/7.5	47 mm

### Ratings

---

Rated voltage	1000 V
Rated current	32 A
Current load, max.	41 A
Rated cross-section	4 mm <sup>2</sup>
Rated impulse voltage	8 kV
Overvoltage category	III
Contamination degree	3

17104.7

SRK 4/2A WH

SRK 4/2A WH

## Technical Data

---

### Connection data

Connection principle	Screw connection
Connection position	Lateral
Connections	2
Number of terminals per level	2
Number of levels	1
Wire cross-section single-core (rigid) / stranded, min.	0.2 mm <sup>2</sup>
Wire cross-section single core (rigid)/stranded, max.	6 mm <sup>2</sup>
Wire cross-section stranded, min.	0.2 mm <sup>2</sup>
Wire cross-section stranded, max.	6 mm <sup>2</sup>
Wire cross-section stranded with wire-end ferrules, min.	0.2 mm <sup>2</sup>
Wire cross-section stranded with wire-end ferrules, max.	4 mm <sup>2</sup>
Wire cross-section AWG, min.	26
Wire cross-section AWG, max.	10
Stripping length	10 mm
Screw head	Slotted
Screw threading	M 3
Tightening torque, min.	0.5 Nm
Tightening torque, max.	1 Nm

17104.7

SRK 4/2A WH

SRK 4/2A WH

## Technical Data

---

### Materials

---

Insulation housing	Polyamide 6.6
--------------------	---------------

Flammability class UL 94	V-0
--------------------------	-----

Working temperature, min.	-40 °C
---------------------------	--------

Working temperature, max.	120 °C
---------------------------	--------

### Further technical data

---

Mounting type	Mounting rail TS 35/7,5
---------------	-------------------------

Gauge plug acc. to EN 60 947-1	A4
--------------------------------	----

Number of cross-connection channels	2
-------------------------------------	---

End plate required	✓
--------------------	---

Number of test pick-off options	1
---------------------------------	---

17104.7

SRK 4/2A WH

SRK 4/2A WH

## Approvals

---

### Standards and regulations

---

Partial certification number	DEKRA 12ATEX0039 U
IECEX certification number	IECEX DEK 12.0006U
EAC approval	TR ZU 004/2011
EAC approval granted	✓

### CSA approval

---

CSA approval	C22.2 No 158
CSA approval granted	✓
CSA Usegroup C: rated voltage	600 V
CSA Usegroup C: rated current	35 A
CSA wire cross-section AWG, min.	26
CSA wire cross-section AWG, max.	10
CSA torque, max.	1 Nm
CSA torque, min.	0.5 Nm

17104.7

SRK 4/2A WH

SRK 4/2A WH

## Approvals

---

### CSAus approval

CSAus approval	UL 1059
CSAus approval granted	✓
CSAus Usegroup C: rated voltage	600 V
CSAus Usegroup C: rated current	35 A
CSAus wire cross-section AWG, min.	26
CSAus wire cross-section AWG, max.	10
CSAus torque, min.	0.5 Nm
CSAus torque, max.	1 Nm

17104.7

SRK 4/2A WH

SRK 4/2A WH

## Approvals

---

### cUL Recognized

cUL Recognized	C22.2 No 158
cUL Recognized	✓
cUL Usegroup B: rated voltage	600 V
cUL Usegroup B: rated current	35 A
cUL Usegroup C: rated voltage	600 V
cUL Usegroup C: rated current	35 A
cUL wire cross-section single-core (rigid) AWG, min.	26
cUL wire cross-section single-core (rigid) AWG, max.	10
cUL wire cross-section stranded AWG, min.	26
cUL wire cross-section stranded AWG, max.	10
cUL torque, min.	0.5 Nm
cUL torque, max.	1 Nm
cUL wire material	Cu

17104.7

SRK 4/2A WH

SRK 4/2A WH

## Approvals

---

### German Lloyd approval

---

GL approval	IEC 60947-7-1
GL approval granted	✓
GL rated voltage	1000 V
GL rated current	41 A
GL rated cross-section	4 mm <sup>2</sup>
GL rated impulse voltage	8 kV
GL environmental category	C

### KEMA KEUR approval

---

KEMA KEUR approval	EN 60947-7-1
KEMA KEUR approval granted	✓
KEMA rated voltage	1000 V
KEMA rated current	41 A
KEMA rated impulse voltage	8 kV
KEMA wire cross-section single core (rigid), min.	0.5 mm <sup>2</sup>
KEMA wire cross-section single-core (rigid), max.	6 mm <sup>2</sup>
KEMA wire cross-section stranded, min.	0.5 mm <sup>2</sup>
KEMA wire cross-section stranded, max.	6 mm <sup>2</sup>
KEMA torque, min.	0.5 Nm



17104.7

SRK 4/2A WH

SRK 4/2A WH

## Approvals

---

### KEMA KEUR approval

---

KEMA torque, max.	1 Nm
-------------------	------

---

### UL Recognized

---

UL Recognized	UL 1059
---------------	---------

---

UL Recognized granted	✓
-----------------------	---

---

UL Usegroup B: rated voltage	600 V
------------------------------	-------

---

UL Usegroup B: rated current	35 A
------------------------------	------

---

UL Usegroup C: rated voltage	600 V
------------------------------	-------

---

UL Usegroup C: rated current	35 A
------------------------------	------

---

UL wire cross-section single-core (rigid) AWG, min.	26
-----------------------------------------------------	----

---

UL wire cross-section single-core (rigid) AWG, max.	10
-----------------------------------------------------	----

---

UL wire cross-section stranded AWG, min.	26
------------------------------------------	----

---

UL wire cross-section stranded AWG, max.	10
------------------------------------------	----

---

UL torque, min.	4.4 Lb In.
-----------------	------------

---

UL torque, max.	8.8 Lb In.
-----------------	------------

---

UL wire material	Cu
------------------	----

---

UL factory wiring	✓
-------------------	---

---

UL field wiring	✓
-----------------	---

---

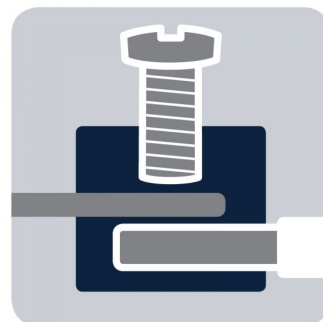
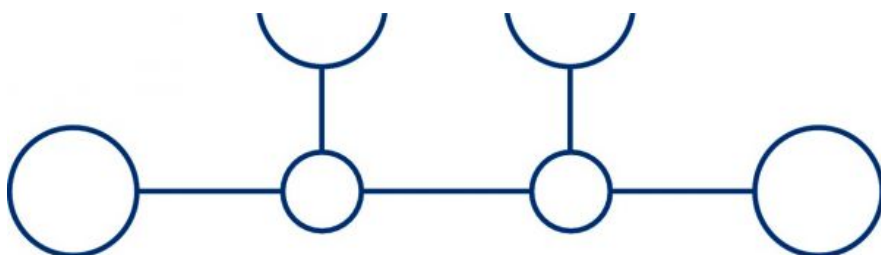
17104.7

SRK 4/2A WH

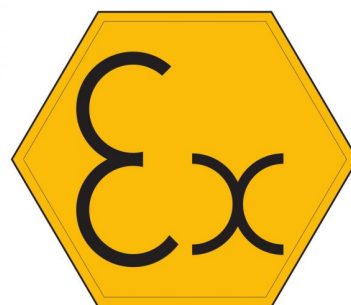
SRK 4/2A WH

## Media

---



**M3**



**EAC**

17104.7

SRK 4/2A WH

SRK 4/2A WH

## Media

---



**CRA<sup>®</sup> US**

17104.7

SRK 4/2A WH

SRK 4/2A WH

## Accessories

---

### Cover

---



Cover, Width: 6 mm, Colour: Yellow

---

### In general

Order number	Article designation	GTIN (EAN)	Packaging unit
17296.8	SAD 1/6/B	4044211205447	50 PC

---

### Measurement pick-off terminal

---



Measurement pick-off terminal, Screw connection, Mounting type: On base, Rated cross-section: 2.5 mm<sup>2</sup>, Width: 5.9 mm, Colour: Beige

---

### In general

Order number	Article designation	GTIN (EAN)	Packaging unit
17120.2	SMAG 4/2,5	4044211172107	10 PC

---

17104.7

SRK 4/2A WH

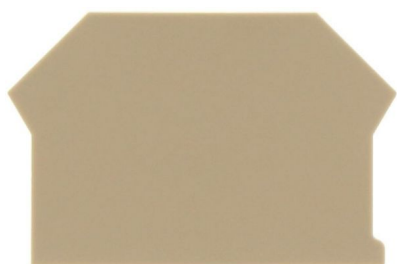
SRK 4/2A WH

## Accessories

---

### End plate

---



End plate, Width: 1.5 mm, Colour: Beige

### In general

Order number	Article designation	GTIN (EAN)	Packaging unit
2001.2	AP 2,5-10	4044211047979	50 PC

---

### End bracket

---



End stop, Mounting type: Mounting rail TS 35/7.5 and TS 35/15, Width: 8 mm, Colour: Beige

### In general

Order number	Article designation	GTIN (EAN)	Packaging unit
17250.2	SES 35	4044211178253	50 PC

---

17104.7

SRK 4/2A WH

SRK 4/2A WH

## Accessories

---

### Insulating cover for cross-connector

---



Insulating cap, Colour: Yellow

#### In general

Order number	Article designation	GTIN (EAN)	Packaging unit
17200.8	SQIK 2,5-10	4044211148539	20 PC

---

### Insulated cross connector

---



Insulated cross-connector, No. of poles: 10, Mounting type: Plug in, Width: 60.1 mm, Rated cross-section: 4 mm<sup>2</sup>, Colour: Yellow

#### In general

Order number	Article designation	GTIN (EAN)	Packaging unit
17219.8	SQI 4/10	4044211148720	10 PC

---

17104.7

SRK 4/2A WH

SRK 4/2A WH

## Accessories

---

### Insulated cross connector

---



Insulated cross-connector, No. of poles: 2, Mounting type: Plug in, Width: 11.3 mm, Rated cross-section: 4 mm<sup>2</sup>, Colour: Yellow

### In general

Order number	Article designation	GTIN (EAN)	Packaging unit
17211.8	SQI 4/2	4044211148645	50 PC

---



Insulated cross-connector, No. of poles: 3, Mounting type: Plug in, Width: 17.4 mm, Rated cross-section: 4 mm<sup>2</sup>, Colour: Yellow

### In general

Order number	Article designation	GTIN (EAN)	Packaging unit
17212.8	SQI 4/3	4044211148652	50 PC

---

17104.7

SRK 4/2A WH

SRK 4/2A WH

## Accessories

---

### Insulated cross connector

---



Insulated cross-connector, No. of poles: 30, Mounting type: Plug in, Width: 181.1 mm, Rated cross-section: 4 mm<sup>2</sup>, Colour: Yellow

### In general

Order number	Article designation	GTIN (EAN)	Packaging unit
17220.8	SQI 4/30	4044211148737	5 PC

---



Insulated cross-connector, No. of poles: 4, Mounting type: Plug in, Width: 23.5 mm, Rated cross-section: 4 mm<sup>2</sup>, Colour: Yellow

### In general

Order number	Article designation	GTIN (EAN)	Packaging unit
17213.8	SQI 4/4	4044211148669	20 PC

---



17104.7

SRK 4/2A WH

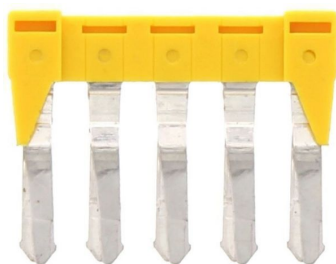
SRK 4/2A WH

## Accessories

---

### Insulated cross connector

---



Insulated cross-connector, No. of poles: 5, Mounting type: Plug in, Width: 29.6 mm, Rated cross-section: 4 mm<sup>2</sup>, Colour: Yellow

### In general

Order number	Article designation	GTIN (EAN)	Packaging unit
17214.8	SQI 4/5	4044211148676	20 PC

---



Insulated cross-connector, No. of poles: 8, Mounting type: Plug in, Width: 47.9 mm, Rated cross-section: 4 mm<sup>2</sup>, Colour: Yellow

### In general

Order number	Article designation	GTIN (EAN)	Packaging unit
17217.8	SQI 4/8	4044211148706	10 PC

---

17104.7

SRK 4/2A WH

SRK 4/2A WH

## Accessories

---

### Insulated cross connector

---



Insulated cross-connector, No. of poles: 9, Mounting type: Plug in, Width: 54 mm, Rated cross-section: 4 mm<sup>2</sup>, Colour: Yellow

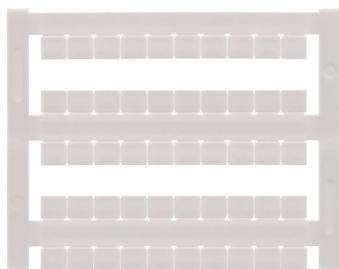
### In general

Order number	Article designation	GTIN (EAN)	Packaging unit
17218.8	SQI 4/9	4044211148713	10 PC

---

### Quick-marking

---



Terminal marker / Pocket Maxicard, Length: 5 mm, Width: 6 mm, Colour: White

### In general

Order number	Article designation	GTIN (EAN)	Packaging unit
4702.7	PMC SB 6/50 WH	4044211089986	500 PC

---

17104.7

SRK 4/2A WH

SRK 4/2A WH

## Accessories

---

### Screw driver

---



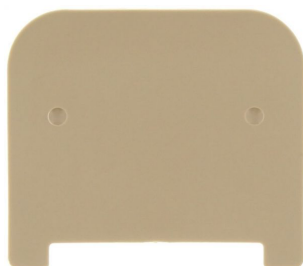
Screwdriver with bare blade, Colour: Black-grey

### In general

Order number	Article designation	GTIN (EAN)	Packaging unit
1086.0	SDB 0,6x3,5	4044211014797	1 PC

### Partition plate

---



Partition plate, Width: 1.5 mm, Colour: Beige

### In general

Order number	Article designation	GTIN (EAN)	Packaging unit
2002.2	TW 2,5-10	4044211048044	50 PC