

2817.0

TA 8/1/ST

TA 8/1/ST



Test adapter, Length: 37.3 mm, Pitch size: 8 mm, Colour: Beige

Business data

Product description	Test adapter
Packaging unit	10
Quantity unit	PC
Weight per piece (not including packaging)	5.8
Weight per piece (including packaging)	5.96
Unit of weight	G
Customs number	85369010
Country of origin	QU

2817.0

TA 8/1/ST

TA 8/1/ST

Technical Data

Dimensions

Length	37.3 mm
Additional height for each terminal block	35.5 mm
Pitch size	8 mm

Connection data

Wire cross-section stranded, min.	0.5 mm ²
Wire cross-section stranded, max.	1 mm ²
Stripping length	5 mm

Materials

Insulation housing	Polyamide 6.6
Flammability class UL 94	V-2
Working temperature, min.	-40 °C
Working temperature, max.	105 °C

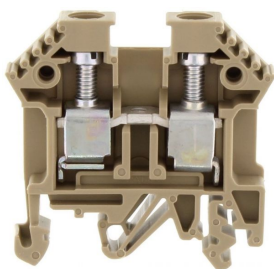
2817.0

TA 8/1/ST

TA 8/1/ST

Accessories

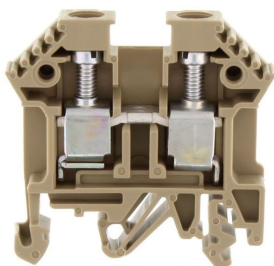
Terminals



Feed-through terminal, Screw connection, Mounting type: Mounting rail TS 35/7.5 and TS 32, Rated cross-section: 10 mm², Width: 8 mm, Colour: Beige

In general

Order number	Article designation	GTIN (EAN)	Packaging unit
1005.2	RK 6-10	4044211001148	100 PC



Ex feed-through terminal ATEX-certified, Screw connection, Mounting type: Mounting rail TS 35/7.5 and TS 32, Rated cross-section: 10 mm², Width: 8 mm, Colour: Beige

In general

Order number	Article designation	GTIN (EAN)	Packaging unit
1430.2	RK 6-10 Ex	4044211044770	100 PC

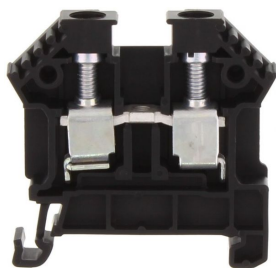
2817.0

TA 8/1/ST

TA 8/1/ST

Accessories

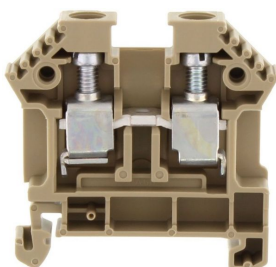
Terminals



Feed-through terminal, Screw connection, Mounting type: Mounting rail TS 35/7.5, Rated cross-section: 10 mm², Width: 8 mm, Colour: Black

In general

Order number	Article designation	GTIN (EAN)	Packaging unit
1749.4	RK 6-10 PA-G	4044211141141	100 PC



Feed-through terminal, Screw connection, Mounting type: Mounting rail TS 35/7.5, Rated cross-section: 10 mm², Width: 8 mm, Colour: Beige

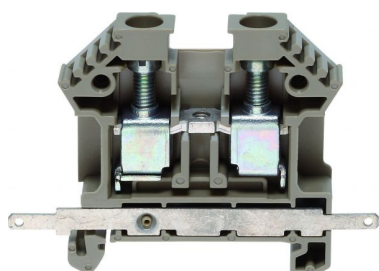
In general

Order number	Article designation	GTIN (EAN)	Packaging unit
1578.2	RK 6-10/35	4044211047627	100 PC

2817.0
TA 8/1/ST
TA 8/1/ST

Accessories

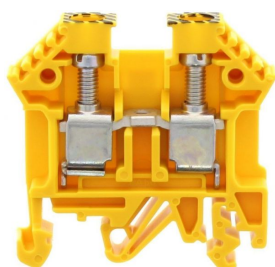
Terminals



Feed-through terminal, Screw connection, Mounting type: Mounting rail TS 35/7.5, Rated cross-section: 10 mm², Width: 8 mm, Colour: Beige

In general

Order number	Article designation	GTIN (EAN)	Packaging unit
1168.2	RK 6-10/35/SAS	4044211128630	100 PC



Feed-through terminal, Screw connection, Mounting type: Mounting rail TS 35/7.5 and TS 32, Rated cross-section: 10 mm², Width: 8 mm, Colour: Black-yellow

In general

Order number	Article designation	GTIN (EAN)	Packaging unit
1564.2	RK 6-10/PE BKYE	4044211047351	100 PC

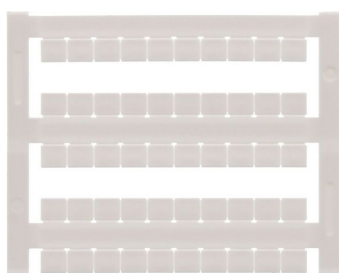
2817.0

TA 8/1/ST

TA 8/1/ST

Accessories

Quick-marking



Terminal marker / Pocket Maxicard, Length: 5 mm,
Width: 6 mm, Colour: White

In general

Order number	Article designation	GTIN (EAN)	Packaging unit
4702.7	PMC SB 6/50 WH	4044211089986	500 PC
