

Series 851

Range-Adjustable Pressure Transducer



Features & Applications

- 8 selectable pressure ranges
- 3 selectable outputs
- No need to ever open the case to make adjustments
- No jumpers to lose
- Over 85% of all HVAC applications covered in just 3 units
- Great way to cut down on inventory and decrease overhead

Specifications

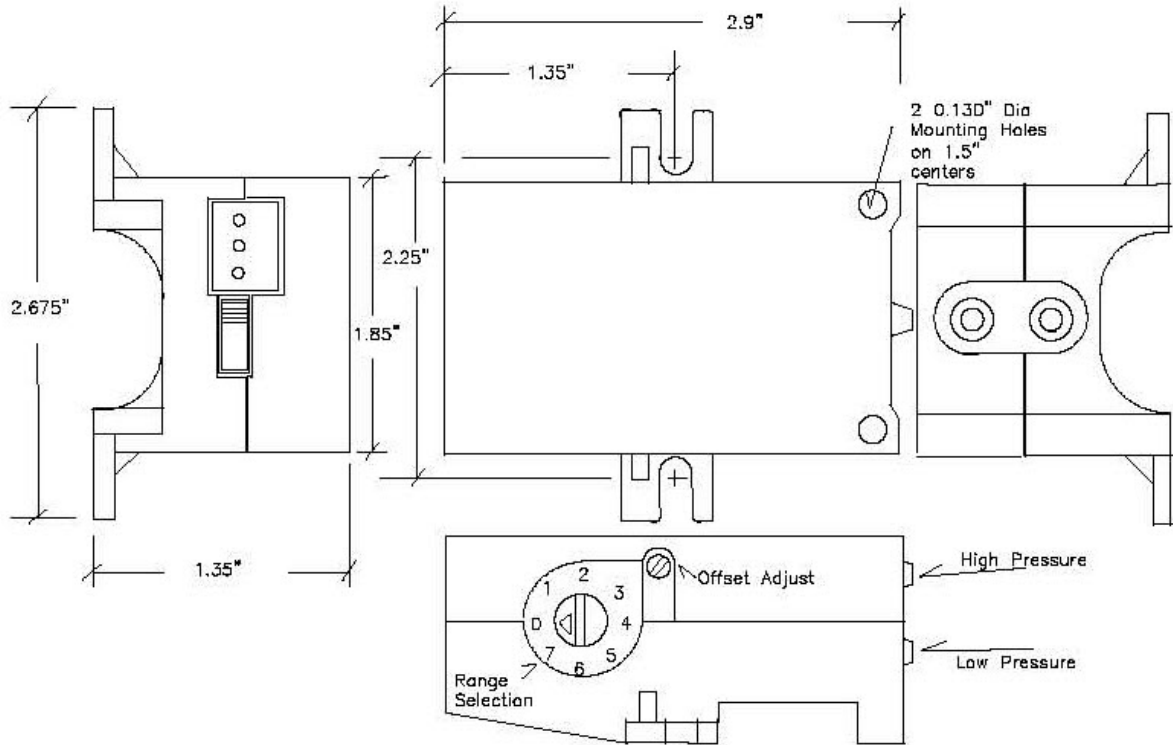
Accuracy*:	+/-1% FSO
Stability:	+/-1% FSO/yr
Thermal Effects:	+/-0.075% FSO/°C
Overpressure:	1-10"WC = 100"WC 11-20"WC = 10x rated pressure 21-30"WC = 5x rated pressure Over 30"WC = 45 PSI
FSO Pressure Range:	4"WC, 12"WC, 4PSI, 12PSI Selectable - see range chart
Compensated Range:	10 to 50°C
Adjustments:	Offset (for adjusting offset when selecting ranges)
Media:	Non-corrosive and non-ionic gases
Operating Humidity:	90% RH non-condensing
Operating Temp:	-25° to 70°C
Input Supply:	18-24 VDC/24 VAC
Supply Current:	<10mA (Voltage Output) <30mA (Current Output)
Load Resistance:	2KΩ minimum on voltage output, 500Ω maximum loop resistance on 4-20mA output
Output Signal:	Selectable: 1-5VDC, 1-10VDC, 4- 20mA**
Electrical Connections:	Pluggable screw terminal block
Pressure Connections:	Barbed fitting for 1/8" ID tubing
Enclosure:	Impact resistant ABS plastic
Dimensions:	Approx. 3.5" x 2.7" x 1.4" (8.7cm x 6.8cm x 3.5cm) with mounting flanges

* Includes non-linearity hysteresis and non-repeatability at a fixed temperature

** 3-wire; 4-20mA

Note: Controller Sensors LLC reserves the right to make changes at any time to any products herein. Controller Sensors LLC does not assume any liability arising out of the application or use of any product described herein, neither does it convey any license under its patent rights nor the rights of others.

Physical Drawing



How to Order

A typical order number consists of the **model** number, **type**, and **version**.

<u>Model</u>	<u>Type</u>	<u>Version</u>	<u>Selectable Pressure Ranges</u>	<u>Selectable Output Signals</u>
851	D = Differential Or Gage*	4WC	0-4"WC; 2"WC, 1"WC, 0.5"WC +/-2"WC; +/-1"WC; +/-0.5"WC; +/-0.25"WC	1-5VDC 1-10VDC 4-20mA**
		12WC	0-12"WC; 6"WC; 3"WC; 1.5"WC +/-6"WC; +/-3"WC; +/-1.5"WC; +/-0.75"WC	
		4PSI	0-4PSI; 2PSI; 1PSI, 0.5PSI +/-2PSI; +/-1PSI; +/-0.5PSI; +/-0.25PSI	
		12PSI	0-12PSI; 6PSI; 3PSI, 1.5PSI +/-6PSI; +/-3PSI; +/-1.5PSI; +/-0.75PSI	

Example: **851D 4" WC** provides a part that has 4"WC FSO with eight (8) rotary switch selectable pressures as designated above as well as the three (3) slide switch selectable outputs as designated above.

* With a gage application, one of the two ports is vented to atmosphere

** All units will drive 500 ohms with the 4-20mA output selection