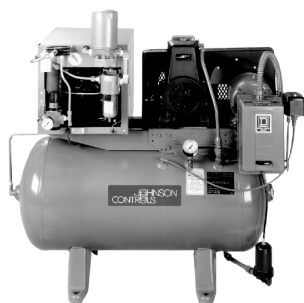


AS Series Simplex and AD Series Duplex

Lubricated Climate Control Air Compressors

**Simplex 1 hp with Air Dryer**

Description

The AS Series Simplex and AD Series Duplex Air Compressors are designed and factory tested to meet the most demanding specifications for low oil carryover and long life in the climate control industry.

Features

- receiver tank is ASME coded and also meets the requirements of California Ordinance 462 (L) (2)
- an ASME safety relief valve set and sealed at 115 psig is included

**Duplex 3hp with Deluxe Alternator**

- calibrated pressure electric switches provide automatic cut-in and cut-out
- an unloading feature provides loadless starting
- an auxiliary, crankshaft-driven fan and air control shroud are designed to achieve low head temperatures and minimal oil carryover
- duplex units consist of two equally rated motor compressor assemblies mounted on a single receiver tank

- an available alternator assembly on duplex models alternates compressor use, and automatically provides a second unit for standby or extra demand. A deluxe alternator offers individual operation of either compressor, if desired, and provides for field modification of operating voltage.

Accessories

- Included:
 - vibration mounting pads
 - crankcase filled with Johnson Controls F-1000-383 compressor oil
 - intake filter-silencers on all models
- Not included:
 - manual power supply disconnect switch
- Optional
 - factory mounted Johnson Controls A-4412-1 Air Dryer with air purification system available on 1/2 through 3 hp models
 - refer to the selection chart for additional options

To Order

Specify the code number from the following selection chart.

Specifications

AS Series Simplex and AD Series Duplex Lubricated Climate Control Air Compressors Performance					
Base Model	Motor hp	Compressor rpm		Compressor Capacity acfm ^(a)	
AS and AD - 105 AS and AD - 005	1/2	805		1.8	
AS and AD - 107 AS and AD - 007	3/4	1000		2.5	
AS and AD - 110 AS and AD - 010	1	675 ^(b)	745 ^(c)	3.7 ^(b)	4.1 ^(c)
AS and AD - 015	1-1/2	990 ^(b)	1,055 ^(c)	5.2 ^(b)	5.9 ^(c)
AS and AD - 020	2	740 ^(b)	795 ^(c)	8.2 ^(b)	9.0 ^(c)
AS and AD - 030	3	850 ^(d)	775 ^(e)	12.0 ^(d)	13.2 ^(e)
AS and AD - 050	5	660 ^(f)	685 ^(g)	22.0 ^(f)	24.2 ^(g)
AS and AD - 075	7-1/2	965 ^(f)	810 ^(g)	31.5 ^(f)	34.6 ^(g)
AS and AD - 100	10	800 ^(h)	710 ⁽ⁱ⁾	39.0 ^(h)	42.5 ⁽ⁱ⁾

(a) Actual cubic feet per minute from one pump at 100% runtime at 80 psig (560 kPa), with clean inlet air filter installed.

(b) Models Prior to 6/1/98

(c) Models After 6/1/98

(d) Models Prior to 9/15/98

(e) Models After 9/15/98

(f) Models Prior to 7/20/98

(g) Models After 7/20/98

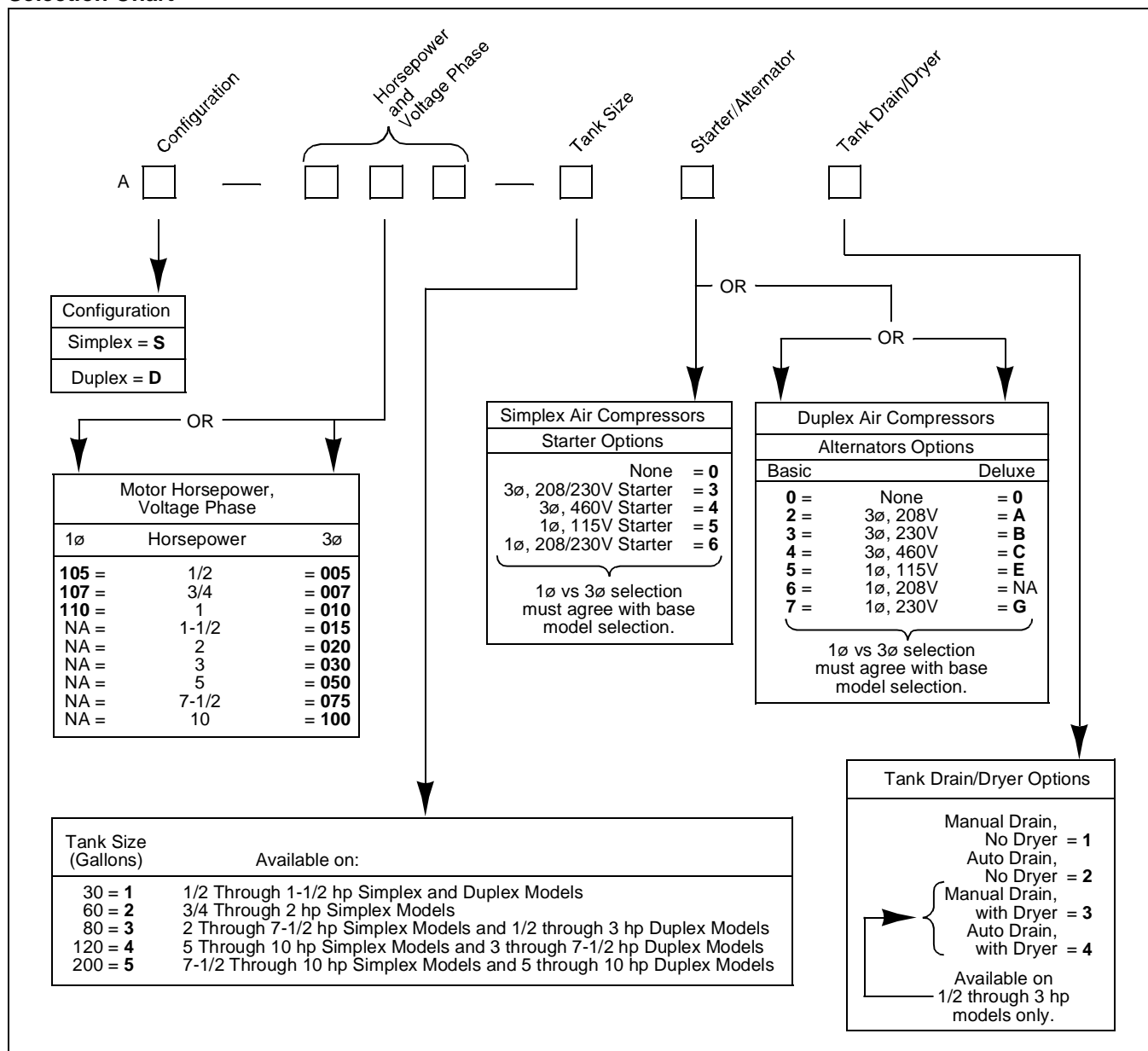
(h) Models Prior to 2/28/99

(i) Models After 2/28/99

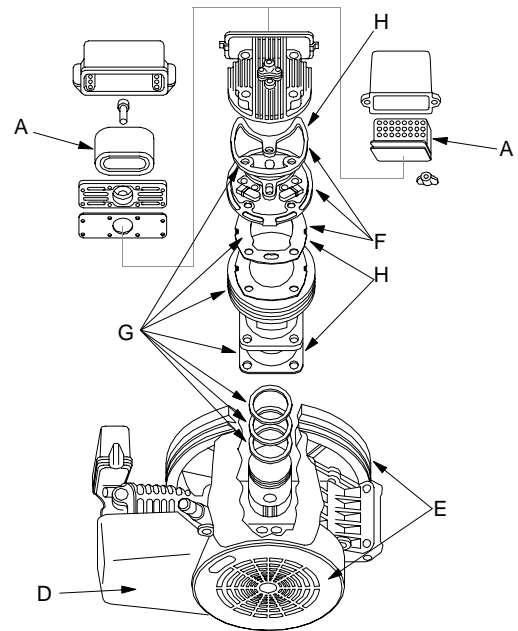
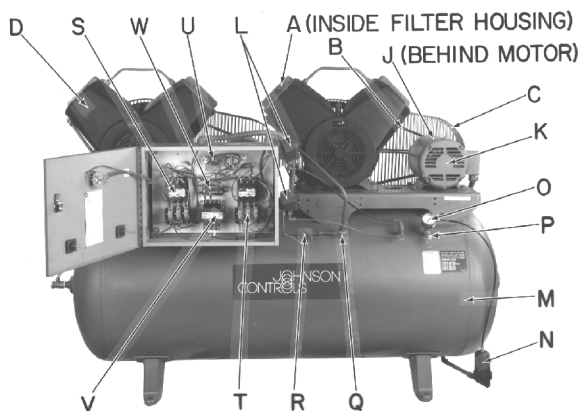
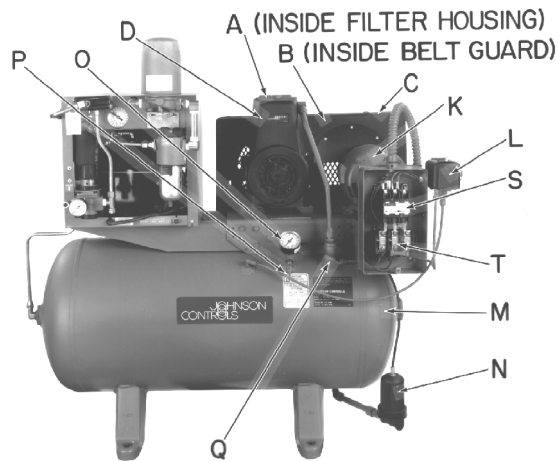
Note: De-rate the values listed above by 3% for every 1000 feet above sea level.

AS Series Simplex and AD Series Duplex Lubricated Climate Control Air Compressors (Continued)

Selection Chart



AS Series Simplex and AD Series Duplex Lubricated Climate Control Air Compressors (Continued)



Repair Parts

Code Number		Call-out	Description	Qty. of Kits Req'd per Pump		
		A	Intake Filter Element Kits:			
			Motor Horsepower			
A-005-6023			1/2	1		
A-010-6023 (a)	A-005-6023 (b)		3/4	1		
A-010-6023 (c)	A-010-6023NP (d)		1, 1-1/2	1		
A-010-6023 (c)	A-030-6023NP (d)		2	2 (c)	1 (d)	
A-030-6023 (e)	A-030-6023NP (f)		3	2 (e)	1 (f)	
A-075-6005 (g)	A-030-6023NP (h)		5, 7-1/2	2		
A-075-6005 (i)	A-030-6023NP (j)		10	3		
A-200-6005			15, 20	2		

(a) Models Prior to 8/1/90
(b) Models After 8/1/90

(c) Models Prior to 6/1/98
(d) Models After 6/1/98

(e) Models Prior to 9/15/98
(f) Models After 9/15/98

(g) Models Prior to 7/20/98
(h) Models After 7/20/98

(i) Models Prior to 2/28/99
(j) Models After 2/28/99

AS Series Simplex and AD Series Duplex Lubricated Climate Control Air Compressors (Continued)

Repair Parts (Continued)

Code Number		Call-out	Description		Qty. of Kits Req'd per Pump	
		B	Drive Belt Kits			
			Motor Horsepower	Size		
A-005-6006			1/2	A-42		1
A-010-6006 (a)	A-005-6006 (b)		3/4	A-43 (a)	A-42 (b)	1
A-010-6006			1	A-43		1
A-015-6006 (c)	A-015-6006NP (d)		1-1/2	A-45 (c)	A-46 (d)	1
A-020-6006 (c)	A-020-6006NP (d)		2	A-61 (c)	A-65 (d)	1
A-030-6006 (e)	A-030-6006NP (f)		3	A-62		1
A-050-6006 (g)	A-050-6006NP (h)		5 (80 and 120 Gallon Tank)	A-65		2
A-075-6046 (g)	A-075-6046NP (h)		7-1/2 (80 and 120 Gallon Tank)	A-67		2
A-075-6056 (g)	A-075-6056NP (h)		7-1/2 (200 Gallon Tank)	A-75		2
A-100-6006 (i)	A-100-6006NP (j)		10	A-80 (i)	A-84 (i)	2
A-150-6006			15	B-92		2
A-200-6006			20	B-96		2
		C	Belt Guard Kits: Includes belt guard, belt guard support (3/4 through 1-1/2 hp models only), and belt guard bracket.			
			Motor Horsepower	Tank Size		
A-010-6012			1/2	30 and 80 Gallon		1
A-010-6012			3/4	30, 60, and 80 Gallon		1
A-010-6012			1	30, 60, and 80 Gallon		1
A-010-6012			1-1/2	30, 60, and 80 Gallon		1
A-020-6012			2	60 and 80 Gallon		1
A-020-6012			3	80 and 120 Gallon		1
A-050-6012			5	80 and 120 Gallon		1
A-100-6012			5	200 Gallon		1
A-050-6012			7-1/2	80 and 120 Gallon		1
A-100-6012			7-1/2	200 Gallon		1
A-100-6012			10	120 and 200 Gallon		1
			D	Cooling Fan Shroud Kits:		
		Motor Horsepower				
A-005-6013		1/2				1
A-010-6013 (a)	A-005-6013 (b)	3/4				1
A-010-6013 (c)	N/A (d)	1, 1-1/2				1
A-020-6013 (c)	A-020-6013NP (d)	2				1
A-030-6013 (e)	A-030-6013NP (f)	3				1
A-050-6013 (g)	A-050-6013NP (h)	5				1
A-050-6013 (g)	A-075-6013NP (h)	7-1/2				1
A-100-6013 (i)	A-100-6013NP (j)	10			1	

(a) Models Prior to 8/1/90
(b) Models After 8/1/90

(c) Models Prior to 6/1/98
(d) Models After 6/1/98

(e) Models Prior to 9/15/98
(f) Models After 9/15/98

(g) Models Prior to 7/20/98
(h) Models After 7/20/98

(i) Models Prior to 2/28/99
(j) Models After 2/28/99

AS Series Simplex and AD Series Duplex Lubricated Climate Control Air Compressors (Continued)

Repair Parts (Continued)

Code Number		Call-out	Description	Qty. of Kits Req'd per Pump
		E	Pump and Flywheel Kits:	
			Motor Horsepower	
A-005-6001			1/2	1
A-010-6001 (a)	A-005-6001 (b)		3/4	1
A-010-6001NP			1, 1-1/2	1
A-020-6001NP			2	1
A-030-6001NP			3	1
A-050-6001NP			5	1
A-075-6001NP			7-1/2	1
A-100-6001NP			10	1
		F	Valve Plate Kits: Includes one head gasket, one valve plate, and one valve spacer.	
			Motor Horsepower	
A-005-6002			1/2	1
A-010-6002 (a)	A-005-6002 (b)		3/4	1
A-010-6002 (c)	A-010-6002NP (d)		1, 1-1/2	1
A-020-6002 (c)	A-020-6002NP (d)		2	2
A-030-6002 (e)	A-030-6002NP (f)		3	2
A-075-6002 (g)	A-050-6002NP (h)		5	2
A-075-6002 (g)	A-075-6002NP (h)		7-1/2	2
A-075-6002 (i)	A-075-6002NP (j)		10	3
		G	Cylinder and Ring Kits: Includes one cylinder, two compression rings, one oil control ring, one head gasket, one valve spacer, and one cylinder gasket.	
			Motor Horsepower	
A-005-6004			1/2	1
A-010-6004 (a)	A-005-6004 (b)		3/4	1
A-010-6004 (c)	A-010-6004NP (d)		1, 1-1/2	1
A-020-6004 (c)	A-020-6004NP (d)		2	2
A-030-6004 (e)	A-030-6004NP (f)		3	2
A-075-6004 (g)	A-050-6004NP (h)		5	2
A-075-6004 (g)	A-075-6004NP (h)		7-1/2	2
A-075-6004 (i)	A-075-6004NP (j)		10	2 or 3

(a) Models Prior to 8/1/90

(b) Models After 8/1/90

(c) Models Prior to 6/1/98

(d) Models After 6/1/98

(e) Models Prior to 9/15/98

(f) Models After 9/15/98

(g) Models Prior to 7/20/98

(h) Models After 7/20/98

(i) Models Prior to 2/28/99

(j) Models After 2/28/99

AS Series Simplex and AD Series Duplex Lubricated Climate Control Air Compressors (Continued)

Repair Parts (Continued)

Code Number		Call-out	Description		Qty. of Kits Req'd per Pump		
		H	Spare Gasket Kits: Includes one head gasket, one valve spacer, and one cylinder gasket.				
			Motor Horsepower				
A-005-6003 ^(k)			1/2		1		
A-010-6003 ^{(a) (k)}	A-005-6003 ^{(b) (k)}		3/4		1		
A-010-6003 ^(k)			1, 1-1/2		1		
A-020-6003 ^(k)			2		1		
A-030-6003 ^(k)			3		1		
A-050-6003 ^(k)			5, 7-1/2		1		
A-100-6003 ^(k)		10		1			
		J	Motor Pulley Kits:				
			Motor hp	Type			
A-005-6007			1/2	1A-4.4 in. P.D., 5/8 in. Bore		1	
A-007-6007 ^(a)	A-007-6037 ^(b)		3/4	1A-3.2 in. P.D., 5/8 in. Bore ^(a)	1A-5.8 in. P.D., 5/8 in. Bore ^(b)	1	
A-110-6007			1 (Single-Phase)	1A-4.0 in. P.D., 5/8 in. Bore		1	
A-010-6007			1 (Three-Phase)	1A-4.0 in. P.D., 7/8 in. Bore		1	
A-015-6007			1-1/2	1A-6.0 in. P.D., 7/8 in. Bore		1	
A-020-6007			2	1A-5.5 in. P.D., 7/8 in. Bore		1	
A-030-6007 ^(e)	A-030-6007NP ^(f)		3	1A-6.2 in. P.D., 1-1/8 in. Bore ^(e)	1A-6.0 in. P.D., 1-1/8 in. Bore ^(f)	1	
A-050-6007 ^(g)	A-050-6007NP ^(h)		5	2A-5.6 in. P.D., 1-1/8 in. Bore		1	
A-075-6007 ^(g)	A-075-6007NP ^(h)		7-1/2	2A-8.2 in. P.D., 1-3/8 in. Bore ^(g)	2A-7.6 in. P.D., 1-3/8 in. Bore ^(h)	1	
A-100-6007 ⁽ⁱ⁾	A-100-6007NP ^(j)		10	2A-7.6 in. P.D., 1-5/8 in. Bore		1	
		K	Motors			^(l) Purchase Locally for All Models:	
				Motor hp	Motor Phase	Motor Voltage	
Century C320				1/2	Single	115-208/230	1
Century H273					Three	208-230/460	1
Century C323				3/4	Single	115-208/230	1
Century H581					Three	208-230/460	1
Century ^(m) C774 or Baldor L1310M				1	Single	115-208/230	1
Century ^(m) H614 or Baldor M3116T					Three	208-230/460	1
Century ^(m) R146 or Baldor M3154T				1-1/2	Three	208-230/460	1
Century ^(m) R147 or Baldor M3157T				2	Three	208-230/460	1
Century ^(m) R206 or Baldor M3211T				3	Three	208-230/460	1
Century ^(m) R207 or Baldor M3218T				5	Three	208-230/460	1
Century ^(m) R308 or Baldor M3311T				7-1/2	Three	208-230/460	1
Century ^(m) R309 or Baldor M3313T				10	Three	208-230/460	1

(a) Models Prior to 8/1/90

(b) Models After 8/1/90

(c) Models Prior to 6/1/98

(d) Models After 6/1/98

(e) Models Prior to 9/15/98

(f) Models After 9/15/98

(g) Models Prior to 7/20/98

(h) Models After 7/20/98

(i) Models Prior to 2/28/99

(j) Models After 2/28/99

(k) Repair requires liquid sealant (A-999-6000 for crankcase to cylinder only).

(l) For motor warranty service, contact the local authorized motor service center.

(m) One through ten horsepower air compressors shipped after 6/1/92 are equipped with Baldor motors.

AS Series Simplex and AD Series Duplex Lubricated Climate Control Air Compressors (Continued)

Repair Parts (Continued)

Code Number	Call-out	Description	Qty. of Kits Req'd per Pump
		Pressure Electric (PE) Switch Kits: For all horsepower models.	
A-100-6010	L	Lead Switch: Factory set at approximately 70 psig (490 kPa) cut-in and 90 psig (630 kPa) cut-out.	—
A-100-6011		Lag Switch: Factory set at approximately 60 psig (420 kPa) cut-in and 80 psig (560 kPa) cut-out.	—
		Receiver Tanks:	
		Motor Horsepower Tank Size Ship Weight lb (kg)	
A-010-6030 ⁽ⁿ⁾		1/2, 3/4	
A-010-6030 ^(c) (n) A-010-6030NP ^(d) (n)		1, 1-1/2	30 Gallon 134.0 (60.78) —
A-010-6060		1/2, 3/4	
A-010-6060 ^(c) A-010-6060NP ^(d)		1, 1-1/2	60 Gallon 175.0 (79.38) —
A-020-6060 ^(c) A-020-6060NP ^(d)		2	60 Gallon 184.0 (83.46) —
A-020-6060 ^(e) A-020-6060NP ^(f)		3	
A-010-6080 ⁽ⁿ⁾		1/2, 3/4	
A-010-6080 ^(c) (n) A-010-6080NP ^(d) (n)	M	1, 1-1/2	80 Gallon 235.0 (106.59) —
A-020-6080 ^(c) (n) A-020-6080NP ^(d) (n)		2	
A-020-6080 ^(e) (n) A-020-6080NP ^(f) (n)		3	80 Gallon 243.0 (110.22) —
A-020-6120 ^(c) (n) A-020-6120NP ^(d) (n)		2	
A-020-6120 ^(e) (n) A-020-6120NP ^(f) (n)		3	120 Gallon 398.0 (180.53) —
A-050-6120 ^(g) (n) A-050-6120NP ^(h) (n)		5, 7-1/2	120 Gallon 415.0 (188.24) —
A-100-6200 ^(g) (n) A-100-6200NP ^(h) (n)		5, 7-1/2	
A-100-6200 ⁽ⁱ⁾ (n) A-100-6200NP ^(j) (n)		10	200 Gallon 677.0 (307.08) —
		Receiver Tank Drain Kits:	
Purchase Locally	N	Manual Tank Drain, 1/4 in. Internal NPT	—
A-100-6021		Automatic Tank Drain	—
G-2010-24	O	Tank Pressure Gauge Kit	—
		Safety Relief Valve Kits: Factory Set at approximately 115 psig (805 kPa).	
A-050-6009	P	1/2 through 5 hp Models (1/4 in. external NPT)	—
A-200-6009		7-1/2 and 10 hp Models (1/4 in. external NPT)	—
		Check Valve Kits:	
		Motor Horsepower Size	
A-010-6008	Q	1/2 through 3 1/2 in. External NPT x 1/2 in. Internal NPT	1
A-075-6008		5 through 10 3/4 in. External NPT x 3/4 in. Internal NPT	1
A-100-6020	R	Shuttle Valve Kit: Includes one shuttle valve, three flare fittings, and three nuts.	—

(a) Models Prior to 8/1/90

(b) Models After 8/1/90

(c) Models Prior to 6/1/98

(d) Models After 6/1/98

(e) Models Prior to 9/15/98

(f) Models After 9/15/98

(g) Models Prior to 7/20/98

(h) Models After 7/20/98

(i) Models Prior to 2/28/99

(j) Models After 2/28/99

(n) This replacement tank will include mounting hardware for a second pump since the same tank is used for simplex and duplex air compressors.

AS Series Simplex and AD Series Duplex Lubricated Climate Control Air Compressors (Continued)

Repair Parts (Continued)

Code Number	Call-out	Description						Qty. of Kits Req'd per Pump
	S	Starter Assembly Kits: Includes starter assembly and starter assembly enclosure (enclosure is not included with starter assemblies having a 115 volt coil).						
		Motor hp	Air Compres- sor Type	Electrical Equipment	Motor Phase	Motor Voltage	Enclosure	
A-101-6014		1/2	Simplex	Starter Only	Single	115	No	1
A-102-6014						230	Yes	1
A-302-6014					Three	208	Yes	1
A-302-6014						230	Yes	1
A-303-6014						460	Yes	1
A-101-6014			Duplex	Basic Alternator Package	Single	115	No	1
A-102-6014						230	Yes	1
A-302-6014					Three	208	Yes	1
A-302-6014						230	Yes	1
A-303-6014				Duplex Alternator Package	Single	460	Yes	1
A-101-6014						115	No	1
A-101-6014					Three	230	No	1
A-306-6014						208	No	1
A-306-6014						230	No	1
A-306-6014						460	No	1
A-101-6014		3/4	Simplex	Starter Only	Single	115	No	1
A-102-6014						230	Yes	1
A-302-6014					Three	208	Yes	1
A-302-6014						230	Yes	1
A-303-6014						460	Yes	1
A-101-6014			Duplex	Basic Alternator Package	Single	115	No	1
A-102-6014						230	Yes	1
A-302-6014					Three	208	Yes	1
A-302-6014						230	Yes	1
A-303-6014				Deluxe Alternator Package	Single	460	Yes	1
A-101-6014						115	No	1
A-101-6014					Three	230	No	1
A-306-6014						208	No	1
A-306-6014	230					No	1	
A-306-6014	460					No	1	

AS Series Simplex and AD Series Duplex Lubricated Climate Control Air Compressors (Continued)

Repair Parts (Continued)

Code Number	Call-out	Description						Qty. of Kits Req'd per Pump
	S	Starter Assembly Kits (Continued)						
		Motor hp	Air Compres- sor Type	Electrical Equipment	Motor Phase	Motor Voltage	Enclosure	
A-101-6014		1	Simplex	Starter Only	Single	115	No	1
A-102-6014						230	Yes	1
A-302-6014					Three	208	Yes	1
A-302-6014						230	Yes	1
A-303-6014						460	Yes	1
A-101-6014			Duplex	Basic Alternator Package	Single	115	No	1
A-102-6014						230	Yes	1
A-302-6014					Three	208	Yes	1
A-302-6014						230	Yes	1
A-303-6014						460	Yes	1
A-101-6014				Deluxe Alternator Package	Single	115	No	1
A-101-6014						230	No	1
A-306-6014					Three	208	No	1
A-306-6014						230	No	1
A-306-6014						460	No	1
A-302-6014		1-1/2	Simplex	Starter Only	Three	208	Yes	1
A-302-6014						230	Yes	1
A-303-6014						460	Yes	1
A-302-6014			Duplex	Basic Alternator Package	Three	208	Yes	1
A-302-6014						230	Yes	1
A-303-6014						460	Yes	1
A-306-6014				Deluxe Alternator Package	Three	208	No	1
A-306-6014						230	No	1
A-306-6014						460	No	1
A-302-6014						208	Yes	1
A-302-6014		2	Simplex	Starter Only	Three	230	Yes	1
A-303-6014						460	Yes	1
A-302-6014						208	Yes	1
A-302-6014			Duplex	Basic Alternator Package	Three	230	Yes	1
A-303-6014						460	Yes	1
A-306-6014						208	No	1
A-306-6014				Deluxe Alternator Package	Three	230	No	1
A-306-6014						460	No	1
A-306-6014	208					No	1	
A-306-6014	230					No	1	

AS Series Simplex and AD Series Duplex Lubricated Climate Control Air Compressors (Continued)

Repair Parts (Continued)

Code Number	Call-out	Description						Qty. of Kits Req'd per Pump
	S	Starter Assembly Kits (Continued)						
		Motor hp	Air Compres- sor Type	Electrical Equipment	Motor Phase	Motor Voltage	Enclosure	
A-302-6014		3	Simplex	Starter Only	Three	208	Yes	1
A-302-6014						230	Yes	1
A-303-6014						460	Yes	1
A-302-6014			Duplex	Basic Alternator Package	Three	208	Yes	1
A-302-6014						230	Yes	1
A-303-6014						460	Yes	1
A-306-6014				Deluxe Alternator Package	Three	208	No	1
A-306-6014						230	No	1
A-306-6014						460	No	1
A-302-6014		5	Simplex	Starter Only	Three	208	Yes	1
A-302-6014						230	Yes	1
A-303-6014						460	Yes	1
A-302-6014			Duplex	Basic Alternator Package	Three	208	Yes	1
A-302-6014						230	Yes	1
A-303-6014						460	Yes	1
A-306-6014				Deluxe Alternator Package	Three	208	No	1
A-306-6014						230	No	1
A-306-6014						460	No	1
A-305-6014		7-1/2	Simplex	Starter Only	Three	208	Yes	1
A-305-6014						230	Yes	1
A-303-6014						460	Yes	1
A-305-6014			Duplex	Basic Alternator Package	Three	208	Yes	1
A-305-6014						230	Yes	1
A-303-6014						460	Yes	1
A-307-6014				Deluxe Alternator Package	Three	208	No	1
A-307-6014						230	No	1
A-306-6014						460	No	1
A-305-6014		10	Simplex	Starter Only	Three	208	Yes	1
A-305-6014						230	Yes	1
A-304-6014						460	Yes	1
A-305-6014			Duplex	Basic Alternator Package	Three	208	Yes	1
A-305-6014						230	Yes	1
A-304-6014						460	Yes	1
A-308-6014				Deluxe Alternator Package	Three	208	No	1
A-308-6014	230					No	1	
A-307-6014	460					No	1	

AS Series Simplex and AD Series Duplex Lubricated Climate Control Air Compressors (Continued)

Repair Parts (Continued)

Code Number	Call-out	Description				Qty. of Kits Req'd per Pump
		Thermal Overload Kits: Includes one thermal overload for single-phase motors and three thermal overloads for three-phase motors.				
		Motor Horsepower	Motor Manufac- turer	Motor Phase	Motor Voltage	
A-121-6016		1/2	Century	Single	115	1
A-114-6016					208/230	1
A-308-6016				Three	208/230	1
A-303-6016					460	1
A-125-6016		3/4	Century	Single	115	1
A-117-6016					208/230	1
A-310-6016				Three	208/230	1
A-305-6016					460	1
A-125-6016		1	Century and Baldor	Single	115	1
A-117-6016					208/230	1
A-313-6016			Century	Three	208/230	1
A-312-6016			Baldor	Three	208/230	1
A-306-6016			Century and Baldor	Three	460	1
A-317-6016		1-1/2	Century	Three	208/230	1
A-315-6016	T		Baldor	Three	208/230	1
A-309-6016			Century and Baldor	Three	460	1
A-319-6016		2	Century	Three	208/230	1
A-318-6016			Baldor	Three	208/230	1
A-312-6016			Century and Baldor	Three	460	1
A-324-6016		3	Century	Three	208/230	1
A-321-6016			Baldor	Three	208/230	1
A-316-6016			Century	Three	460	1
A-314-6016			Baldor	Three	460	1
A-327-6016		5	Century	Three	208/230	1
A-326-6016			Baldor	Three	208/230	1
A-320-6016			Century	Three	460	1
A-319-6016			Baldor	Three	460	1
A-330-6016		7-1/2	Century and Baldor	Three	208/230	1
A-324-6016					460	1
A-331-6016		10	Century and Baldor	Three	208/230	1
A-326-6016					460	1

AS Series Simplex and AD Series Duplex Lubricated Climate Control Air Compressors (Continued)

Repair Parts (Continued)

Code Number	Call-out	Description					Qty. of Kits Req'd per Pump
	U	Alternator Relay Kits: Includes relay enclosure where noted.					
		Motor Horsepower	Alternator Package	Motor Voltage	Alternator Coil Voltage	Enclosure	
A-105-6017		1/2 Through 10	Basic	115	208	No	—
A-106-6017				208	208	Yes	—
A-107-6017				230	230	Yes	—
A-105-6017				460	460	Yes	—
A-105-6017		Deluxe		115	115	No	—
A-105-6017				208	115	No	—
A-105-6017				230	115	No	—
A-105-6017	460			115	No	—	
A-100-6018	V	Control Transformer Kit: 208/230/460 — 115V					—
A-100-6019	W	Fuse Kit: Includes three 0.8 amp fuses.					—
	—	Oil Level Sight Glass Kits (Not Shown): Includes sight glass and O-ring.					
A-005-6022		For 1/2 through 1 1/2 horsepower models					1
A-020-6022		For 2 through 10 horsepower models					1
A-1000-267	—	Wire and Terminal Marker Kit (Not Shown)					—
	—	Oil Indicator (Not Shown):					
A-4000-120		Indicator and Needle Valve Assembly (Not Shown)					—
A-4000-121		Indicator Replacement Cartridge (Not Shown)					—
F-1000-383	—	Johnson Controls Air Compressor Oil (Not Shown): 1 quart bottle; for a full case, order 12 bottles.					—
A-999-100	—	Touch-Up Paint (Not Shown): gray; 12 oz spray can.					—
	—	Intake Silencers (Not Shown):					
		Motor Horsepower					
A-050-100		5, 7-1/2					1
A-100-100		10					1
	—	Vibration/Isolation Pad Kits ^(o) (Not Shown): Includes four pads per kit.					
		Tank Size	Dimensions (Width x Height x Depth)				
A-999-101		30 through 80 Gallon		4 in. x 4 in. x 1 in.			—
A-999-102		120 through 240 gallon		6 in. x 6 in. x 1 in.			—
Tape #317	—	Service Procedures for Johnson Controls AS/AD Air Compressors (Not Shown): This videotape is a visual step-by-step guide to performing maintenance and repair on PureFlow™ air compressors ranging in size from 1/2 to 10 horsepower. Topics covered in this videotape include everything from routine maintenance items (such as changing the oil, replacing the drive belts, and intake filter maintenance, etc.) to more complex repair procedures (including cylinder and ring replacement, changing out the entire pump, and replacing the starter assembly, etc.). This 45 minute color videotape is available from the local Johnson Controls Representative, in either 3/4 in. U-Matic or 1/2 in. VHS formats.					—
PUBL-2629	—	Installation and Service Manual for Johnson Controls Air Compressors.					—

(o) Four vibration/isolation pads are included with every Johnson Controls air compressor shipped from the factory.