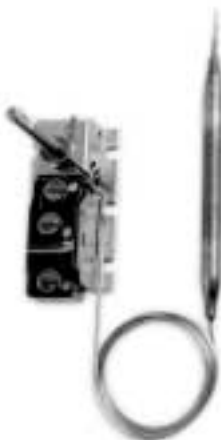
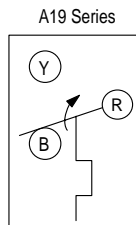


A19

Temperature Control Less Enclosure (SPDT, Close Differential)



A19AGF-31

Action on Increase
of Temperature

Description

Open-type temperature control for mounting in cases or enclosures.

Features

- SPDT contacts for open high or open low applications

Selection Chart

Code Number	Switch Action	Range °F (°C)	Diff F° (C°)	Bulb and Capillary	Range Adjuster	Max. Bulb Temp. °F (°C)
A19AGF-31C	SPDT	40 to 90 (4 to 32)	1 1/2 (0.8)	3/8 x 5 in.; 5 ft Cap.	Shaft	140 (60)

Specifications

- back mounting
- knob supplied by the customer

Applications

- panel-mounted temperature control for a packaged terminal air conditioner or for self-contained HVAC equipment

To Order

Specify a code number from the selection chart.

Replacement Parts

Code Number	Description
CVR28A-617R	Concealed adjustment
CVR28A-618R	Visible scale
KNB20A-602R	Knob Kit

Electrical Ratings

Motor Ratings VAC	120	208	240
AC Full Load Amp	6.0	3.4	3.0
AC Locked Rotor Amp	36.0	20.4	18
Non-Inductive	10 amps, 120 to 277 VAC		
Pilot Duty	125 VA, 24 to 277 VAC		