

<http://www.functionaldevices.com>
sales@functionaldevices.com

RIB2401D Enclosed Relay 10 Amp DPDT with 24Vac/dc/120Vac Coil



Functional Devices, Inc. A600A 2003

GENERAL SPECIFICATIONS

Relays & Contact Type: One (1) DPDT Continuous Duty Coil
Expected Relay Life: 10 million cycles minimum mechanical
Operating Temperature: -30 to 140° F
Operate Time: 8mS
Relay Status: LED On = Activated
Dimensions: 1.7" x 2.8" x 1.5" with 1/2" NPT nipple
Wire Length: 16", 600V Rated
Approvals: UL Listed, UL916, UL864, C-UL Canada
California State Fire Marshal
Housing Rating: Plenum, NEMA 1
Gold Flash: No
Override Switch: No

CONTACT RATINGS

10 Amp Resistive 30 Vdc
10 Amp Resistive 277 Vac General Use
1/2 HP for N.O. 120/240 Vac
1/3 HP for N.C. 120/240 Vac

B300 Pilot Duty

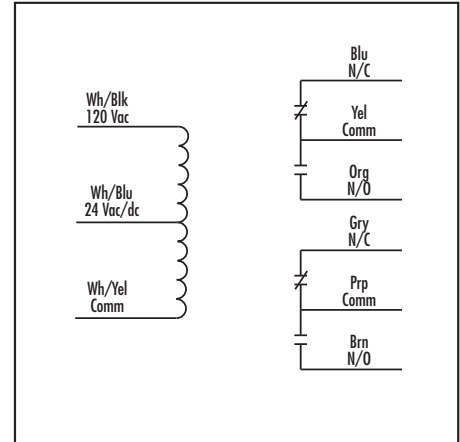
120 Vac 30A Make 3A Break (360VA)
240 Vac 15A Make 1.5A Break (360VA)
208 Vac 17.3A Make 1.73A Break (360VA)
277 Vac 13A Make 1.3A Break (360VA)
24 Vac 30A Make 5A Break (120VA) (5A Max)

COIL CURRENT

22 mA @ 18 Vac 18 mA @ 20 Vdc
29 mA @ 24 Vac 22 mA @ 24 Vdc
36 mA @ 30 Vac 32 mA @ 30 Vdc
28 mA @ 120 Vac

COIL VOLTAGE INPUT

24 Vac / dc, 120 Vac; 50-60 Hz
DROP OUT = 3 Vac / 3.8 Vdc
PULL IN = 18 Vac / 20 Vdc



NOTES

Can be ordered in a NEMA 4 enclosure by adding "-N4" to the end of the model number.

NOTES: