

## RIBH1C

Enclosed Relay 10Amp SPDT with 10-30Vac/dc/208-277Vac Coil



Functional Devices, Inc. A600A 2003

### GENERAL SPECIFICATIONS

**# Relays & Contact Type:** One (1) SPDT Continuous Duty Coil  
**Expected Relay Life:** 10 million cycles minimum mechanical  
**Operating Temperature:** -30 to 140° F  
**Operate Time:** 20mS  
**Relay Status:** LED On = Activated  
**Dimensions:** 1.7" x 2.8" x 1.5" with 1/2" NPT nipple  
**Wires:** 16", 600V Rated  
**Approvals:** UL Listed, UL916, UL864, C-UL Canada  
California State Fire Marshal  
**Housing Rating:** Plenum, NEMA 1  
**Gold Flash:** Yes  
**Override Switch:** No

### CONTACT RATINGS

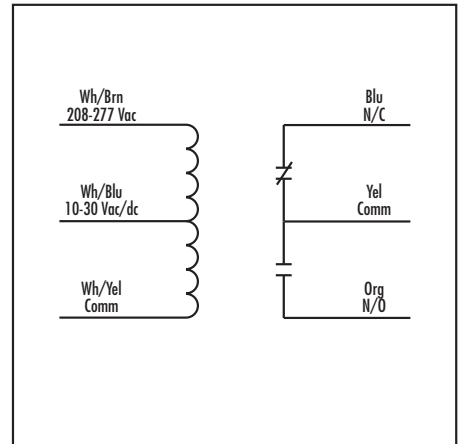
10 Amp resistive	120-277 Vac
10 Amp resistive	28 Vdc
480 VA Pilot Duty	240-277 Vac
480 VA Ballast	277 Vac
600 Watt Tungsten	120 Vac N.O.
240 Watt Tungsten	120 Vac N.C.
1/3 HP for N.O.	120-240 Vac
1/6 HP for N.C.	120-240 Vac
1/4 HP for N.O.	277 Vac
1/8 HP for N.C.	277 Vac

### COIL CURRENT

30 mA @ 10 Vac	12 mA @ 10 Vdc
32 mA @ 12 Vac	14 mA @ 12 Vdc
42 mA @ 24 Vac	16 mA @ 24 Vdc
50 mA @ 30 Vac	18 mA @ 30 Vdc
35 mA @ 208-277 Vac	

### COIL VOLTAGE INPUT

10-30 Vac/dc, 208-277 Vac; 50-60 Hz  
DROP OUT = 2.1 Vac / 2.8 Vdc  
PULL IN = 9 Vac / 10 Vdc



### NOTES

Can be ordered in a NEMA 4 enclosure by adding "N4" to the end of the model number.

## NOTES: