

<http://www.functionaldevices.com>
sales@functionaldevices.com

RIBU1SM

Enclosed Relay 10 Amp SPST-NO + Override + Monitor with 10-30Vac/dc/120Vac Coil



Functional Devices, Inc. A600A 2003



GENERAL SPECIFICATIONS

Relays & Contact Type: One (1) SPST Continuous Duty Coil
Expected Relay Life: 10 million cycles minimum mechanical
Operating Temperature: -30 to 140° F
Operate Time: 20ms
Relay Status: LED On = Activated
Dimensions: 2.3" x 3.2" x 1.8" with 1/2" NPT nipple
Wire Length: 16", 600V Rated
Approvals: UL Listed, UL916, UL864, C-UL Canada
California State Fire Marshal
Housing Rating: Plenum, NEMA 1
Gold Flash: Yes
Override Switch: Yes + monitor

CONTACT RATINGS

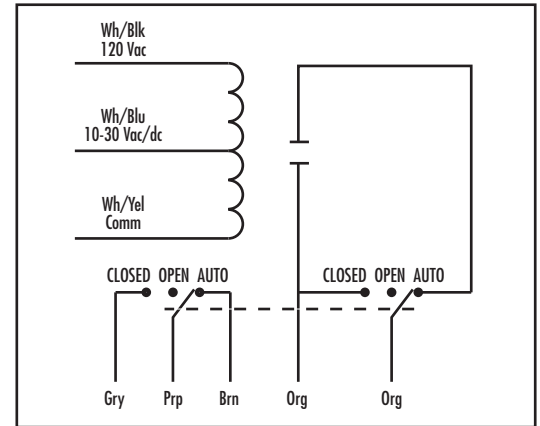
10 Amp resistive	277 Vac
480 VA Pilot Duty	277 Vac
480 VA Ballast	277 Vac
600 Watt Tungsten	120 Vac N.O.
240 Watt Tungsten	120 Vac N.C.
1/3 HP for N.O.	120-240 Vac
1/6 HP for N.C.	120-240 Vac
1/4 HP for N.O.	277 Vac
1/8 HP for N.C.	277 Vac

COIL CURRENT

30 mA @ 10 Vac	12 mA @ 10 Vdc
32 mA @ 12 Vac	14 mA @ 12 Vdc
42 mA @ 24 Vac	16 mA @ 24 Vdc
50 mA @ 30 Vac	18 mA @ 30 Vdc
25 mA @ 120 Vac	

COIL VOLTAGE INPUT

10-30 Vac/dc, 120 Vac; 50-60 Hz
DROP OUT = 2.1 Vac / 2.8 Vdc
PULL IN = 9 Vac / 10 Vdc



NOTES

- Can be ordered Normally Closed by adding "-NC" after the model number.
- Second pole of override switch can be connected to digital-in of controller to report position of override switch.
- Rating of second pole is 277 Vac max & 5 Amp max.

NOTES: