



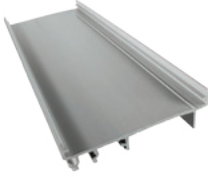
Functional Devices, Inc.  
 310 South Union Street  
 Russiaville, IN 46979  
 www.functionaldevices.com

Office: (765) 883-5538  
 Sales: (800) 888-5538  
 Fax: (765) 883-7505  
 Email: sales@functionaldevices.com

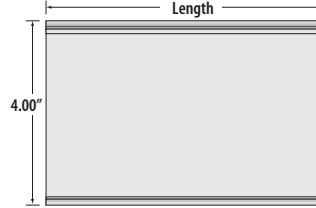
Manufacturing quality products in the United States of America since 1969

## AT4 SERIES

### 4.00" Wide AdapTrack® for Relays, Current Sensors, and Power Supplies



Functional Devices, Inc. A600C 2005



**Flame Rated:** 94-5V  
**DIN Rail Sizes:** 32 mm x 15 mm asymmetrical DIN rail EN50035  
 35 mm x 7.5 mm asymmetrical DIN rail EN50022  
 22.4 mm x 6.9 mm symmetrical NEMA A Series rail  
**Approvals:** UL Component Recognized, USA & Canada  
**Mounting:** AT4 Series AdapTrack® snaps onto the three most common DIN rail sizes to provide mounting for 4.00" wide track-mountable relays, current sensors, or power supplies.

### AT4 SERIES SELECTION GUIDE

MODEL #	WIDTH	LENGTH	DIN RAIL SIZES
AT4-2	4.00"	2.00"	3 Most Common (see general specs to the left)
AT4-6	4.00"	6.00"	3 Most Common (see general specs to the left)
AT4-12	4.00"	12.00"	3 Most Common (see general specs to the left)
AT4-24	4.00"	24.00"	3 Most Common (see general specs to the left)
AT4-48	4.00"	48.00"	3 Most Common (see general specs to the left)

## Notes: