

## RIB2402D

### 10 AMP PILOT CONTROL RELAY

Enclosed Relay 10 Amp DPDT with 24 Vac/dc/208-277 Vac



#### SPECIFICATIONS

# Relays & Contact Type: One (1) DPDT Continuous Duty Coil  
Expected Relay Life: 10 million cycles minimum mechanical  
Operating Temperature: -30 to 140° F  
Operate Time: 8mS  
Relay Status: LED On = Activated  
Dimensions: 1.70" x 2.80" x 1.50" with .50" NPT nipple  
Wires: 16", 600V Rated  
Approvals: UL Listed, UL916, UL864, C-UL  
California State Fire Marshal, CE  
Housing Rating: Plenum, NEMA 1  
Gold Flash: No  
Override Switch: No

#### Contact Ratings:

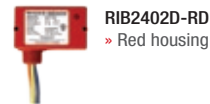
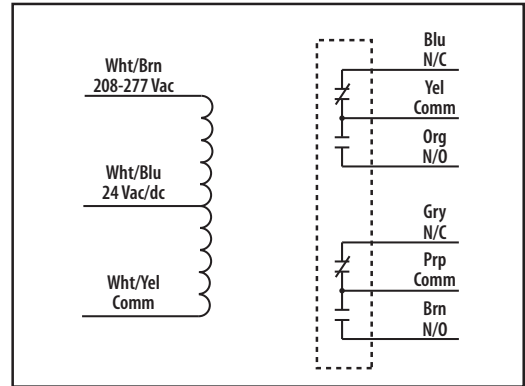
10 Amp Resistive @ 30 Vdc  
10 Amp General Use @ 277 Vac  
1/2 HP for N/O @ 120/240 Vac  
1/3 HP for N/C @ 120/240 Vac  
**B300 Pilot Duty**  
120 Vac 30A Make 3A Break (360 VA)  
240 Vac 15 A Make 1.5A Break (360 VA)  
208 Vac 17.3A Make 1.73A Break (360 VA)  
277 Vac 13A Make 1.3A Break (360 VA)  
24 Vac 30A Make 5A Break (120VA) 5A Max

#### Coil Current:

22 mA @ 18 Vac  
29 mA @ 24 Vac  
36 mA @ 30 Vac  
32 mA @ 208-277 Vac  
18 mA @ 20 Vdc  
22 mA @ 24 Vdc  
32 mA @ 30 Vdc

#### Coil Voltage Input:

24 Vac/dc ; 208-277 Vac ; 50-60 Hz  
Drop Out = 3 Vac / 3.8 Vdc  
Pull In = 18 Vac / 20 Vdc



**RIB2402D-RD**  
» Red housing



**RIB2402D-N4**  
» NEMA 4X housing

## NOTES