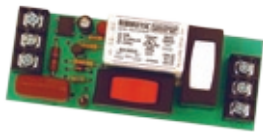


RIBMU1SC

15 AMP PILOT CONTROL RELAY

4.00" Track Mount Relay 15 Amp SPDT + Override with 10-30 Vac/dc/120 Vac Coil



SPECIFICATIONS

Relays & Contact Type: One (1) SPDT Continuous Duty Coil
Expected Relay Life: 10 million cycles minimum mechanical
Operating Temperature: -30 to 140° F
Operate Time: 20ms
Relay Status: LED On = Activated
Dimensions: 1.500" x 4.000" x 1.750"
Track Mount: 4.000", See MT4 Series on page 148
MT4 Mounting Track Sold Separately
Approvals: UL Listed, UL916, UL864, C-UL
California State Fire Marshal, CE
Gold Flash: Yes
Override Switch: Yes (2)

Contact Ratings:

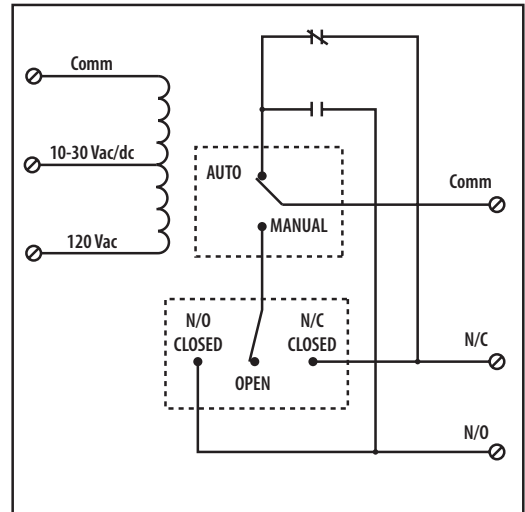
15 Amp Resistive @ 150 Vac
10 Amp Resistive @ 277 Vac
480 VA Pilot Duty @ 277 Vac
480 VA Ballast @ 277 Vac
600 Watt Tungsten @ 120 Vac N/O
240 Watt Tungsten @ 120 Vac N/C
1/3 HP for N/O @ 120-240 Vac
1/6 HP for N/C @ 120-240 Vac
1/4 HP for N/O @ 277 Vac
1/8 HP for N/C @ 277 Vac

Coil Current:

30 mA @ 10 Vac 12 mA @ 10 Vdc
32 mA @ 12 Vac 14 mA @ 12 Vdc
42 mA @ 24 Vac 16 mA @ 24 Vdc
50 mA @ 30 Vac 18 mA @ 30 Vdc
25 mA @ 120 Vac

Coil Voltage Input:

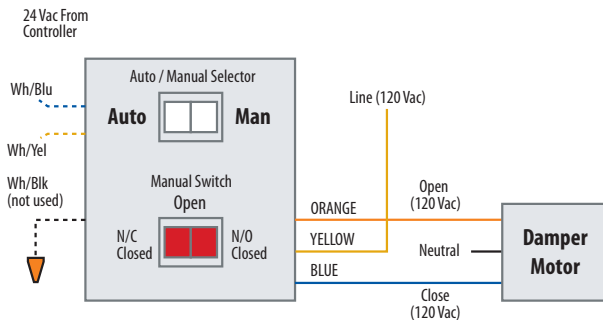
10-30 Vac/dc ; 120 Vac ; 50-60 Hz
Drop Out = 2.1 Vac / 2.8 Vdc
Pull In = 9 Vac / 10 Vdc



NOTES

DAMPER MOTOR CONTROL WITH TRUE-HOA

The damper motor can be stopped in mid position for debugging. When auto/manual selector is in auto, relay controls the load. When in manual, use the manual switch to control the load.



10 & 15 AMP

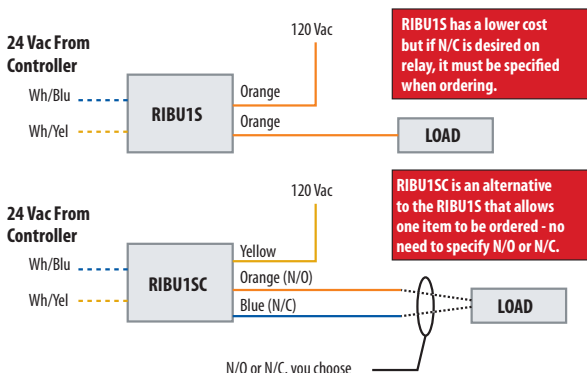
RIBU1SC
RIBH1SC
RIBTU1SC
RIBTH1SC
RIBMU1SC
RIBMH1SC

20 AMP

RIB2401SBC
RIB2402SBC
RIBT2401SBC
RIBT2402SBC
RIBM2401SBC
RIBM2402SBC

RIBU1S VS. RIBU1SC

Stock model RIBU1SC for relay control applications that require true-HOA on either N/O or N/C. No jumpers and no wrong orders.



10 & 15 AMP

RIBU1SC
RIBH1SC
RIBTU1SC
RIBTH1SC
RIBMU1SC
RIBMH1SC

20 AMP

RIB2401SBC
RIB2402SBC
RIBT2401SBC
RIBT2402SBC
RIBM2401SBC
RIBM2402SBC