

## RIBU1S

### 10 AMP PILOT CONTROL RELAY

Enclosed Relay 10 Amp SPST-N/O + Override with 10-30 Vac/dc/120 Vac Coil



#### SPECIFICATIONS

# Relays & Contact Type: One (1) SPST Continuous Duty Coil  
Expected Relay Life: 10 million cycles minimum mechanical  
Operating Temperature: -30 to 140° F  
Operate Time: 20ms  
Relay Status: LED On = Activated  
Dimensions: 2.30" x 3.20" x 1.80" with .50" NPT nipple  
Wires: 16", 600V Rated  
Approvals: UL Listed, UL916, UL864, C-UL  
California State Fire Marshal, CE  
Housing Rating: Plenum, NEMA 1  
Gold Flash: Yes  
Override Switch: Yes

#### Contact Ratings:

10 Amp Resistive @ 277 Vac  
480 VA Pilot Duty @ 240-277 Vac  
480 VA Ballast @ 277 Vac  
600 Watt Tungsten @ 120 Vac N/O  
240 Watt Tungsten @ 120 Vac N/C  
1/3 HP for N/O @ 120-240 Vac  
1/6 HP for N/C @ 120-240 Vac  
1/4 HP for N/O @ 277 Vac  
1/8 HP for N/C @ 277 Vac

#### Coil Current:

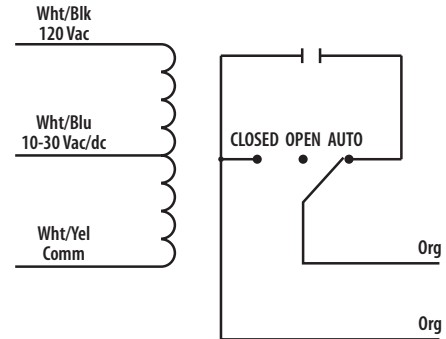
|                 |                |
|-----------------|----------------|
| 30 mA @ 10 Vac  | 12 mA @ 10 Vdc |
| 32 mA @ 12 Vac  | 14 mA @ 12 Vdc |
| 42 mA @ 24 Vac  | 16 mA @ 24 Vdc |
| 50 mA @ 30 Vac  | 18 mA @ 30 Vdc |
| 25 mA @ 120 Vac |                |

#### Coil Voltage Input:

10-30 Vac/dc ; 120 Vac ; 50-60 Hz  
Drop Out = 2.1 Vac / 2.8 Vdc  
Pull In = 9 Vac / 10 Vdc

#### Notes:

- » Order Normally Closed by adding "-NC" to end of model number
- » Order with Momentary Override Switch by adding "-MNO" to end of model number



## NOTES