

## RIBU2C

### 10 AMP PILOT CONTROL RELAY

Enclosed Relays 10 Amp 2 SPDT with 10-30 Vac/dc/120 Vac Coil



#### SPECIFICATIONS

# Relays & Contact Type: Two (2) SPDT Continuous Duty Coil  
Expected Relay Life: 10 million cycles minimum mechanical  
Operating Temperature: -30 to 140° F  
Operate Time: 20mS  
Relay Status: LED On = Activated  
Dimensions: 2.30" x 3.20" x 1.80" with .75" NPT nipple  
Wires: 16", 600V Rated  
Approvals: UL Listed, UL916, UL864, C-UL  
California State Fire Marshal, CE  
Housing Rating: Plenum, NEMA 1  
Gold Flash: Yes  
Override Switch: No

#### Contact Ratings:

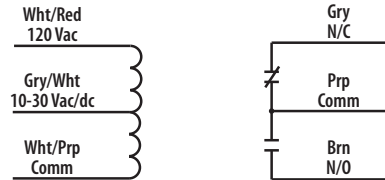
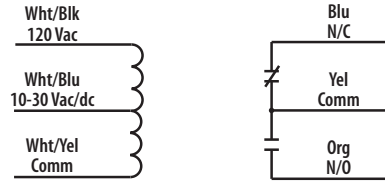
10 Amp Resistive @ 120-277 Vac  
10 Amp Resistive @ 28 Vdc  
480 VA Pilot Duty @ 240-277 Vac  
480 VA Ballast @ 277 Vac  
600 Watt Tungsten @ 120 Vac N/C  
240 Watt Tungsten @ 120 Vac N/C  
1/3 HP for N/O @ 120-240 Vac  
1/6 HP for N/C @ 120-240 Vac  
1/4 HP for N/O @ 277 Vac  
1/8 HP for N/C @ 277 Vac

#### Coil Current:

30 mA @ 10 Vac 12 mA @ 10 Vdc  
32 mA @ 12 Vac 14 mA @ 12 Vdc  
42 mA @ 24 Vac 16 mA @ 24 Vdc  
50 mA @ 30 Vac 18 mA @ 30 Vdc  
25 mA @ 120 Vac

#### Coil Voltage Input:

10-30 Vac/dc ; 120 Vac ; 50-60 Hz  
Drop Out = 2.1 Vac / 2.8 Vdc  
Pull In = 9 Vac / 10 Vdc



## NOTES