

RIBU2S2

10 AMP PILOT CONTROL RELAY

Enclosed Relays 10 Amp 2 SPST-N/O + 2 Overrides with 10-30 Vac/dc/120 Vac Coil



SPECIFICATIONS

Relays & Contact Type: Two (2) SPST Continuous Duty Coil
Expected Relay Life: 10 million cycles minimum mechanical
Operating Temperature: -30 to 140° F
Operate Time: 20mS
Relay Status: LED On = Activated
Dimensions: 4.00" x 4.00" x 1.80" with .50" NPT nipple
Wires: 16", 600V Rated
Approvals: UL Listed, UL916, UL864, C-UL
California State Fire Marshal, CE
Housing Rating: Plenum, NEMA 1
Gold Flash: Yes
Override Switch: Yes (2)

Contact Ratings:

10 Amp Resistive @ 277 Vac
480 VA Pilot Duty @ 240-277 Vac
480 VA Ballast @ 277 Vac
600 Watt Tungsten @ 120 Vac N/O
240 Watt Tungsten @ 120 Vac N/C
1/3 HP for N/O @ 120-240 Vac
1/6 HP for N/C @ 120-240 Vac
1/4 HP for N/O @ 277 Vac
1/8 HP for N/C @ 277 Vac

Coil Current:

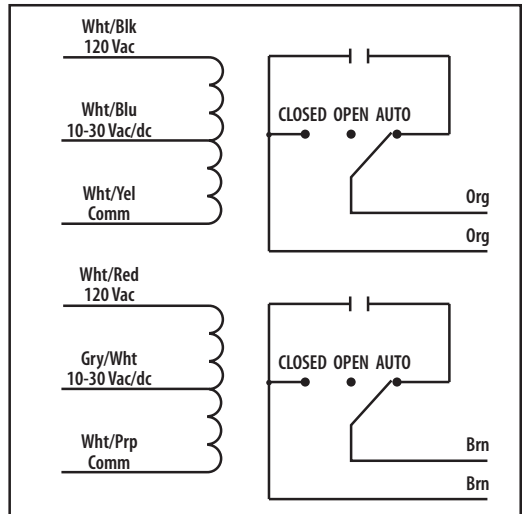
30 mA @ 10 Vac 12 mA @ 10 Vdc
32 mA @ 12 Vac 14 mA @ 12 Vdc
42 mA @ 24 Vac 16 mA @ 24 Vdc
50 mA @ 30 Vac 18 mA @ 30 Vdc
25 mA @ 120 Vac

Coil Voltage Input:

10-30 Vac/dc ; 120 Vac ; 50-60 Hz
Drop Out = 2.1 Vac / 2.8 Vdc
Pull In = 9 Vac / 10 Vdc

Notes:

» Order Normally Closed by adding "-NC" to end of model number



NOTES