

## RIBXLCA

### Enclosed Internal Adjustable .50-10 Amp Current Sensor + Relay 10 Amp SPDT with 10-30 Vac/dc Coil



Functional Devices, Inc. A600C 2005



**# Relays & Contact Type:** One (1) SPDT Continuous Duty Coil  
**Expected Relay Life:** 10 million cycles minimum mechanical  
**Operating Temperature:** -30 to 140° F  
**Operate Time:** 20mS  
**Relay Status:** LED On = Activated  
**Dimensions:** 4.00" x 4.00" x 1.80" with .50" NPT Nipple  
**Wire Length:** 16", 600V Rated  
**Approvals:** UL Listed, UL916, UL864, C-UL Canada  
 California State Fire Marshal  
**Housing Rating:** Plenum, NEMA 1  
**Gold Flash:** Yes  
**Override Switch:** No  
**Sensor Type:** Internal, with contact status  
**Sensor Threshold:** Adjustable, .50-10 Amps  
**Sensor Range:** .50-10 Amps  
**Sensor Output:** Solid State Contact 30 Vac/dc, 0.4 Amp

#### Contact Ratings:

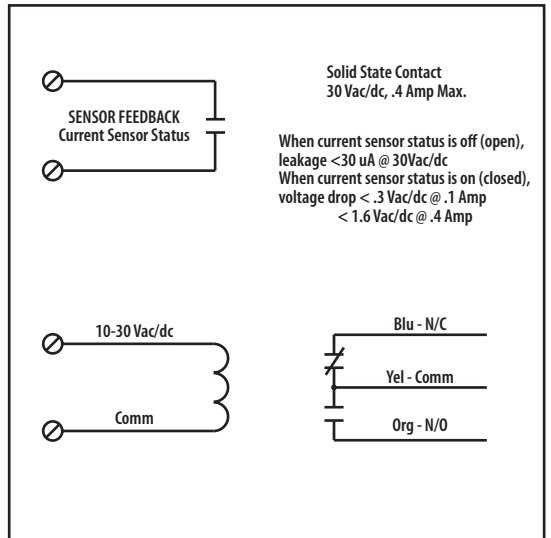
10 Amp Resistive @ 120-277 Vac  
 10 Amp Resistive @ 28 Vdc  
 480 VA Pilot Duty @ 240-277 Vac  
 480 VA Ballast @ 277 Vac  
 600 Watt Tungsten @ 120 Vac N/C  
 240 Watt Tungsten @ 120 Vac N/C  
 1/3 HP for N/O @ 120-240 Vac  
 1/6 HP for N/C @ 120-240 Vac  
 1/4 HP for N/O @ 277 Vac  
 1/8 HP for N/C @ 277 Vac

#### Coil Current:

30 mA @ 10 Vac	12 mA @ 10 Vdc
32 mA @ 12 Vac	14 mA @ 12 Vdc
42 mA @ 24 Vac	16 mA @ 24 Vdc
50 mA @ 30 Vac	18 mA @ 30 Vdc

#### Coil Voltage Input:

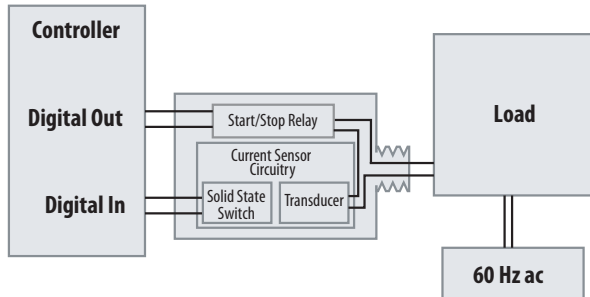
10-30 Vac/dc; 50-60 Hz  
 Drop Out = 2.1 Vac / 2.8 Vdc  
 Pull In = 9 Vac / 10 Vdc



## Notes:

### RELAY & CURRENT SENSOR IN ONE

Directly start/stop load and current sensing all in one package. (No external ring is needed)



#### INTERNAL 20 AMP

RIBX24BF  
 RIBX24SBF  
 RIBX24BA  
 RIBX24SBA

#### INTERNAL 10 AMP

RIBXLCF  
 RIBXLSF  
 RIBXLCA  
 RIBXLXA

#### INTERNAL 5 AMP

RIBXLCEA  
 RIBXLSEA