



Functional Devices, Inc.
310 South Union Street
Russiaville, IN 46979
www.functionaldevices.com

Office: (765) 883-5538
Sales: (800) 888-5538
Fax: (765) 883-7505
Email: sales@functionaldevices.com

Manufacturing quality products in the United States of America since 1969

RIBXLCEA

Enclosed Internal Adjustable .125-5 Amp Current Sensor + Relay 5 Amp SPDT with 10-30 Vac/dc Coil



Functional Devices, Inc. A600C 2005



Relays & Contact Type: One (1) SPDT Continuous Duty Coil
Expected Relay Life: 10 million cycles minimum mechanical
Operating Temperature: -30 to 140° F
Operate Time: 20mS
Relay Status: LED On = Activated
Dimensions: 4.00" x 4.00" x 1.80" with .50" NPT Nipple
Wire Length: 16", 600V Rated
Approvals: UL Listed, UL916, UL864, C-UL Canada
 California State Fire Marshal
Housing Rating: Plenum, NEMA 1
Gold Flash: Yes
Override Switch: No
Sensor Type: Internal, with contact status
Sensor Threshold: Adjustable, .125-5 Amps
Sensor Range: .125-5 Amps
Sensor Output: Solid State Contact 30 Vac/dc, 0.4 Amp

Contact Ratings:

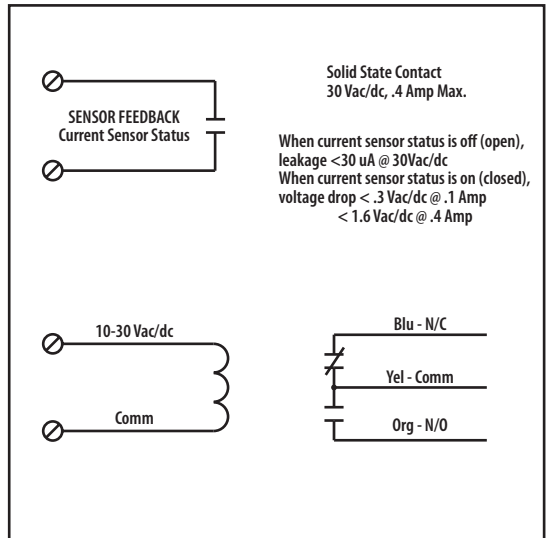
5 Amp Resistive @ 277 Vac
 345 VA Pilot Duty @ 120/240 Vac N/O
 268 VA Pilot Duty @ 277 Vac N/O
 211 VA Pilot Duty @ 120/240 Vac N/C
 175 VA Pilot Duty @ 277 Vac N/C
 1/3 HP for N/O @ 120-240 Vac
 1/6 HP for N/C @ 120-240 Vac
 1/4 HP for N/O @ 277 Vac
 1/8 HP for N/C @ 277 Vac

Coil Current:

30 mA @ 10 Vac	12 mA @ 10 Vdc
32 mA @ 12 Vac	14 mA @ 12 Vdc
42 mA @ 24 Vac	16 mA @ 24 Vdc
50 mA @ 30 Vac	18 mA @ 30 Vdc

Coil Voltage Input:

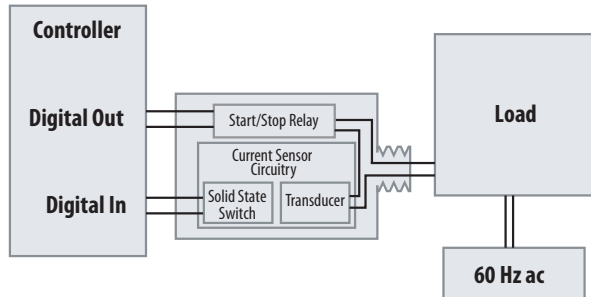
10-30 Vac/dc ; 50-60 Hz
 Drop Out = 2.1 Vac / 2.8 Vdc
 Pull In = 9 Vac / 10 Vdc



Notes:

RELAY & CURRENT SENSOR IN ONE

Directly start/stop load and current sensing all in one package. (No external ring is needed)



INTERNAL 20 AMP

RIBX24BF
 RIBX24SBF
 RIBX24BA
 RIBX24SBA

INTERNAL 10 AMP

RIBXLCF
 RIBXLSF
 RIBXLCA
 RIBXLXA

INTERNAL 5 AMP

RIBXLCEA
 RIBXLSEA