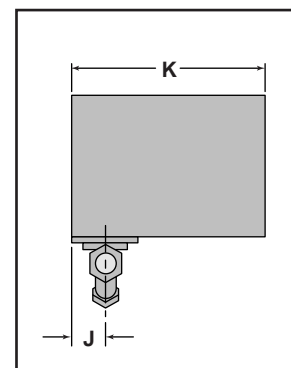
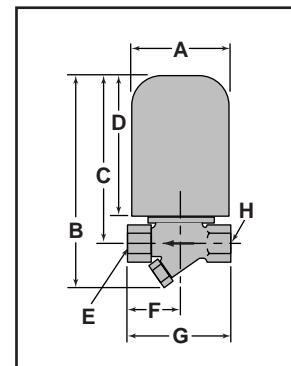


## Water Feeders – Electric

### Series WF Uni-Match® Electric Water Feeders



- For low pressure steam boilers with **cold water feed**
- Three position slide switch allows the timing cycle to be matched to that of the major low water cut-off manufacturers
- Field adaptable feed rate – 1, 2, or 4 gpm (3.8, 7.6, or 15.1 lpm)
- Electronic operation provides consistent, accurate cycle-to-cycle repeatability
- Universal design simplifies selection and reduces stock
- Can be used with mechanical or electronic low water cut-off controls
- Manual feed button
- Includes  $\frac{3}{8}$  NPT thread x  $\frac{1}{2}$ " (13mm) tubing adapters for quick installation with  $\frac{1}{2}$ " (13mm) copper tubing
- Easy to clean strainer
- Maximum water pressure 150 psi (10.5 kg/cm<sup>2</sup>)
- Maximum boiler pressure 15 psi (1 kg/cm<sup>2</sup>)
- Maximum water temperature 120°F (49°C)
- Maximum ambient temperature 100°F (38°C)
- Maximum power consumption (during water feed only)
  - 15 VA at 24 VAC
  - 20 VA at 120 VAC (50 or 60 Hz)



### Dimensions, in. (mm)

A	B	C	D	E NPT	F	G	H NPT	J	K
2 $\frac{7}{8}$ (73)	6 $\frac{1}{4}$ (159)	4 $\frac{7}{8}$ (124)	4 $\frac{1}{4}$ (108)	$\frac{3}{8}$	1 $\frac{17}{32}$ (39)	3 $\frac{1}{16}$ (78)	$\frac{3}{8}$	1 $\frac{1}{32}$ (26)	5 $\frac{13}{16}$ (148)

### Ordering Information

Model Number	Part Number	Description	Weight lbs. (kg)
WF-2-U-24	169550	Electric Water Feeder, 24V	2.8 (1.3)
WF-2-U-120	169560	Electric Water Feeder, 120V	2.8 (1.3)