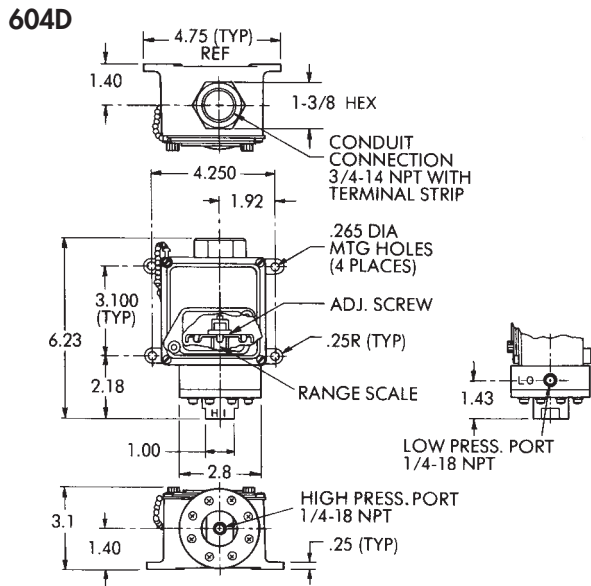


INSTALLATION DRAWING



604D
SHIPPING WT.
APPROX. 41 OZ.
(1162 GRAMS)

Diff. .3 to 75 psid

**SERIES:
604D**

Standard Features:

- U.L. Listed
- NEMA: 4, 13
- Weatherproof
- Internal Case Ground

AMBIENT TEMP. RANGE

- 30° to 160° F
- 34° to 71° C

OPERATING AND ORDERING DATA:

Max Sys. Press. psi		Proof (Test) Press. psi		Adjustable Set-Point Range		Approx. Dead-band psi	Model Number		
High Press. Port	Low Press. Port	Both Ports Simultaneous	High Over High	Low Over High	On Incr. Press. psid		On Decr. Press. psid	MODEL SPDT-Std.	MODEL DPDT "M"
400	750	750	750	400	1 to 18 6 to 75	.3 to 17.5 2 to 71	.6 4	604D1 604D2	604DM1 604DM2

DIFFERENTIAL SWITCHES MODEL 604D • 1/4" ALUMINUM PRESSURE PORTS & POLYIMIDE DIAPHRAGM

Wetted Parts: Aluminum Polyimide, 300 SST Viton

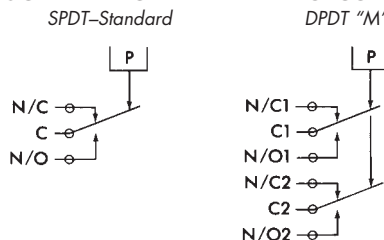
Options Code:

- "E" Ethylene Propylene O-ring
- "J" CSA Approved File No. LR22665
- "Z" Stainless Steel Port
- "7008" Gold Contacts
- "7011" SST Port and SSt Diaphragm (only on 604DZ)
- "7030" SST Port and SST Diaphragm w/Gold Contacts

ELECTRICAL CHARACTERISTICS:
RATING OF SWITCH ELEMENT

VOLTS	AMPERES	
	SPDT	DPDT "M"
125 AC - 50/60 Hz	15	5
250 AC - 50/60 Hz	15	5
480 AC - 50/60 Hz	15	—
28 DC	6	5
125 DC	.4	.5

SCHEMATIC AND WIRING CODE:



ENCLOSURE/CERTIFICATIONS:

All Models shown are Underwriter's Laboratories, Inc. listed in the Recognized Components Index, Guide NKPZ "Motor Controllers, Float and Pressure Operated," File No. E72038.

Model 604DM1 has an approximate dead band of .9 psi.

HOW TO ORDER: Specify model number, add desired "options" listing letter codes first followed by numbers: Custom Control Sensors, Inc. • 21111 Plummer Street, Chatsworth, CA 91311 • Tel: (818)341-4610 • Fax: (818)709-0426
e-mail: switchnet@ccsdualsnap.com • http://www.ccsdualsnap.com