

## TOOL-82

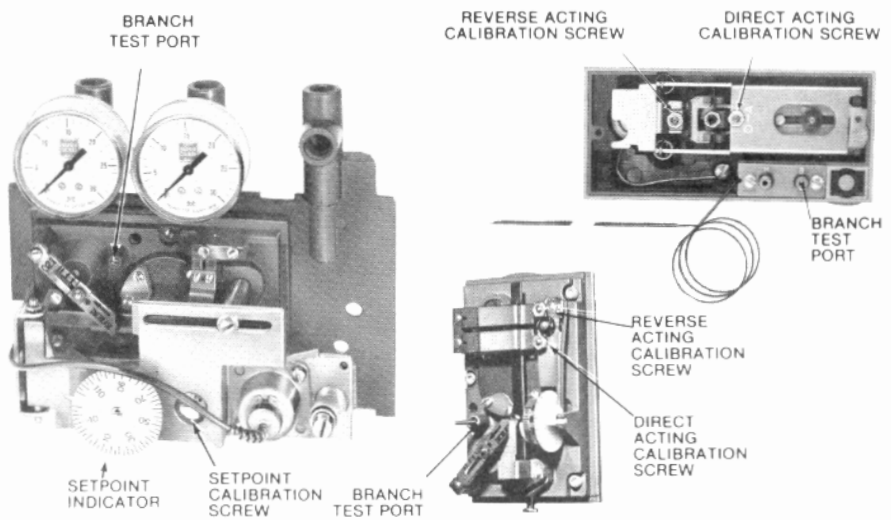


COMBINATION ALLEN/SPLINE  
POCKET WRENCH

5/64" Allen wrench used for branch test port and 0.048" 6 spline wrench used for thermostat calibration.

Products where TOOL-82 is used:

|         |         |        |
|---------|---------|--------|
| TK-1000 | TK-6000 | RK-500 |
| R500    | R503    | RK-504 |
| R504    | R516    | RK-532 |
| R532    | R537    | RK-503 |
| R539    | R540    | RK-516 |
| S515    | T-82    | RK-539 |
| RK-537  | RK-540  | SK-515 |



## TOOL-85



TOOL-85 AIR BULB



3/16 TO 1/8 BARBED REDUCER  
FITTING (WITH TUBE CONNECTORS)



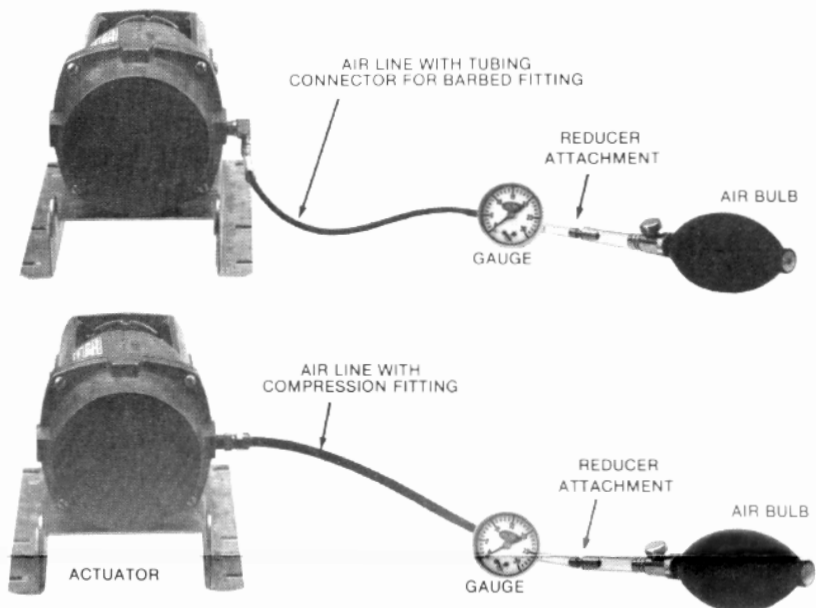
AIR LINE WITH  
TUBING CONNECTOR  
FOR BARBED FITTING



3/16" x 4" BLADE  
ALL PURPOSE SCREWDRIVER



AIR LINE WITH COMPRESSION FITTING



## AL-87

NEEDLE ADAPTOR



Used to test the air pressure. The needle end is inserted into test fitting AL-88 or AL-89.

Products where AL-87 is used:

|         |
|---------|
| CP-8511 |
| CP-8513 |
| PP-8311 |



## B-373



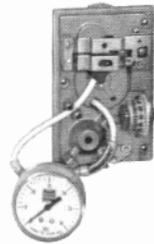
B-373  
FEMALE  
BRANCH TEE



AL-362  
GAUGE

Used to interface gauge with branch line for branch pressure indication.

ROOM THERMOSTAT



PROPER INSTALLATION  
OF GAUGE ADAPTOR  
ASSEMBLY

## N2-4

COMBINATION THERMOSTAT  
CALIBRATION/COVER SCREW WRENCH



Products where N2-4 is used:

|         |        |         |            |
|---------|--------|---------|------------|
| H18-301 | HK-18  | H53-301 | HK-53      |
| P341    | PK-341 | P541    | PK-541     |
| T12     | TK-12  | TR12    | TKR-12     |
| T13     | TK-13  | TR13    | TKR-13     |
| T18     | TK-18  | TR18    | TKR-18     |
| T19     | TK-19  | TR19    | TKR-19     |
| T23     | TK-23  | T24     | TK-24      |
| T27     | TK-27  | T32     | TK-32      |
| T33     | TK-33  | T34     | TK-34      |
| T35     | TK-35  | T36     | TK-36      |
| T435    | TK-435 | T436    | TK-436     |
| T460    | TK-460 | T53-101 | TKS-53-101 |

## TOOL-110

3/32" HEXWRENCH

Products where TOOL-110 is used:

|      |        |
|------|--------|
| P323 | PK-323 |
| S510 | SK-510 |
| S511 | SK-511 |
| S520 | SK-520 |
| S530 | SK-530 |
| S540 | SK-540 |



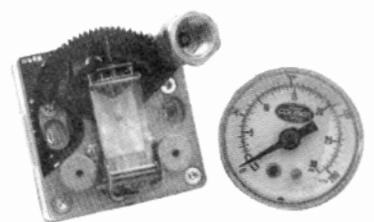
## MCS-GA

GAUGE ADAPTOR



Products where MCS-GA is used:

|         |        |         |            |
|---------|--------|---------|------------|
| H18-301 | HK-18  | H53-301 | HK-53      |
| P341    | PK-341 | MCS-CV  | MCS-CT     |
| T12     | TK-12  | TR12    | TKR-12     |
| T13     | TK-13  | TR13    | TKR-13     |
| T18     | TK-18  | TR18    | TKR-18     |
| T19     | TK-19  | TR19    | TKR-19     |
| T23     | TK-23  | T24     | TK-24      |
| T27     | TK-27  | T32     | TK-32      |
| T33     | TK-33  | T34     | TK-34      |
| T35     | TK-35  | T36     | TK-36      |
| T435    | TK-435 | T436    | TK-436     |
| T460    | TK-460 | T53-101 | TKS-53-101 |



# Pneumatic Calibration Tool Kit

# TOOL-95-1

### STEPS

1. Measure temperature at thermostat.
2. Set dial to temperature measured.
3. attach branch test gauges.
4. Adjust setpoint calibration screw to obtain desired branch pressure.
5. Adjust setpoint to desired control point.

### NOTICE

The thermal element of the room thermostat is very sensitive to temperature change. Do not affect its temperature by touching the bimetal or breathing on the thermostat. When calibrating the instrument, observe the wall box temperature frequently and reset the setpoint dial if required.

### CAUTION

This information is for reference only. Temperature controls are delicate instruments. Consult respective product General Instruction sheets before calibrating or adjusting the control.

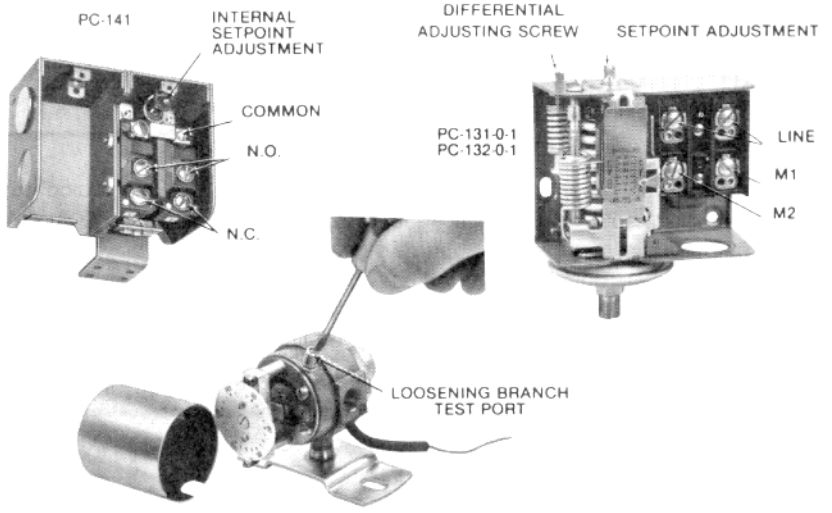


## TOOL-10



MAGNETIC  
SCREWDRIVER

Multiple purpose.

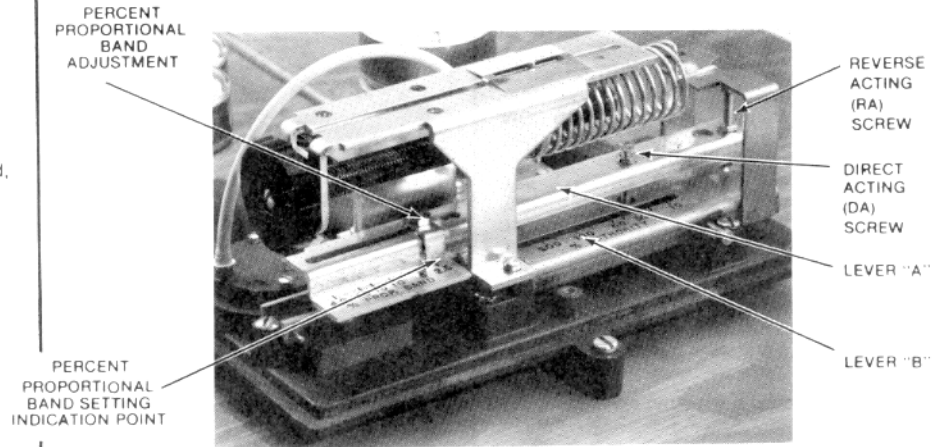


## TOOL-11



CALIBRATION WRENCH FOR RK'S

Used for calibration of the proportional band, reverse and direct acting screws.



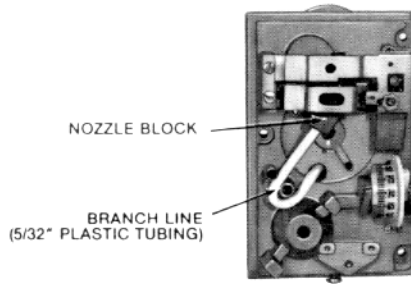
## TOOL-74

Must be ordered separately.  
Not included in this tool kit.



INSERTION TOOL

Used for installing and removing 5/32" plastic air lines in small spaces.



## TOOL-78 AL-362

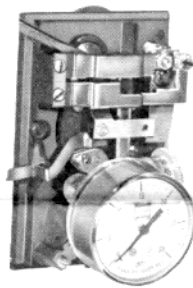


TOOL-78  
ADAPTOR



AL-362  
GAUGE

Used to adapt test gauge to branch test port for TK-1000, TK-6000 PN thermostats.



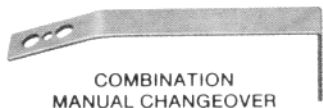
ROOM THERMOSTAT

PROPER INSTALLATION  
OF GAUGE AND BRANCH  
TEE ASSEMBLY



DUCT THERMOSTAT

## TOOL-80-1



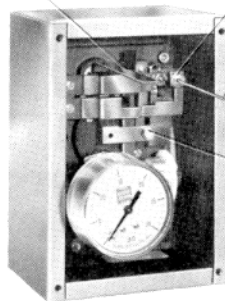
COMBINATION  
MANUAL CHANGEOVER  
CALIBRATION WRENCH

Manual changeover wrench used for TK-1201, TK-1301, TK-1601, TK-13000, TK-14000 series. Calibration wrench used for TK-1700 and TK-1800 series.

### NOTE

The hex nuts on the setpoint adjusting screws are a tension device only. They should not be loosened to make an adjustment.

CHANGEOVER WRENCH  
INSTALLED CORRECTLY



15 PSIG BIMETAL  
CALIBRATION SCREW

20 PSIG BIMETAL  
CALIBRATION SCREW

TK-1700, TK-1800  
SERIES CALIBRATION

