

Pushbutton Units and Indicator Lights

SIRIUS Plastic 3SB3, ○ Round Design, 22 mm

Complete units

Selection and ordering data



Pushbutton unit with flat button



Illuminated pushbutton unit with flat button

Version	Color of actuator	Contacts for	Order No.	List Price \$ 1 unit	Weight approx. kg	Pack Unit	
Pushbutton unit with flat button	black	1 NO	3SB3202-0AA11	15.45	0.04	1	
	black	1 NC	3SB3203-0AA11	15.45			
	red	1 NC	3SB3203-0AA21	15.45			
	yellow	1 NO	3SB3202-0AA31	15.45			
	green	1 NO	3SB3202-0AA41	15.45			
	blue	1 NO	3SB3202-0AA51	15.45			
	white	1 NO	3SB3202-0AA61	15.45			
	black	1 NO + 1 NC	3SB3201-0AA11	25.10	0.05	1	
	red	1 NO + 1 NC	3SB3201-0AA21	25.10			
	yellow	1 NO + 1 NC	3SB3201-0AA31	25.10			
	green	1 NO + 1 NC	3SB3201-0AA41	25.10			
	blue	1 NO + 1 NC	3SB3201-0AA51	25.10			
	white	1 NO + 1 NC	3SB3201-0AA61	25.10			
	Pushbutton unit with extended button	black	1 NO	3SB3202-0BA11	15.45	0.05	1
black		1 NC	3SB3203-0BA11	15.45			
red		1 NC	3SB3203-0BA21	15.45			
yellow		1 NO	3SB3202-0BA31	15.45			
green		1 NO	—	—			
blue		1 NO	3SB3202-0BA51	15.45			
white		1 NO	3SB3202-0BA61	15.45			
black		1 NO + 1 NC	3SB3201-0BA11	25.10	0.05	1	
red		1 NO + 1 NC	3SB3201-0BA21	25.10			
yellow		1 NO + 1 NC	3SB3201-0BA31	25.10			
green		1 NO + 1 NC	—	—			
blue		1 NO + 1 NC	3SB3201-0BA51	25.10			
white		1 NO + 1 NC	3SB3201-0BA61	25.10			
—		—	—	—			
Illuminated pushbutton with flat button with integrated LED UC 24 V	red ¹⁾	1 NC	3SB3246-0AA21	43.55	0.04	1	
	yellow ¹⁾	1 NO	3SB3245-0AA31	43.55			
	green ¹⁾	1 NO	3SB3245-0AA41	43.55			
	blue ¹⁾	1 NO	3SB3245-0AA51	43.55			
	white	1 NO	3SB3245-0AA61	43.55			
	clear ¹⁾	1 NO	3SB3245-0AA71	43.55			
	red ¹⁾	1 NO + 1 NC	3SB3247-0AA21	53.20			0.04
	yellow ¹⁾	1 NO + 1 NC	3SB3247-0AA31	53.20			
	green ¹⁾	1 NO + 1 NC	3SB3247-0AA41	53.20			
	blue ¹⁾	1 NO + 1 NC	3SB3247-0AA51	53.20			
	white	1 NO + 1 NC	3SB3247-0AA61	53.20			
	clear ¹⁾	1 NO + 1 NC	3SB3247-0AA71	53.20			
	—	—	—	—			
	with integrated LED AC 110 V	red ¹⁾	1 NC	3SB3250-0AA21	43.55	0.04	1
		yellow ¹⁾	1 NO	3SB3257-0AA31	43.55		
		green ¹⁾	1 NO	3SB3257-0AA41	43.55		
		blue ¹⁾	1 NO	3SB3257-0AA51	43.55		
		white	1 NO	3SB3257-0AA61	43.55		
		clear ¹⁾	1 NO	3SB3257-0AA71	43.55		
		red ¹⁾	1 NO + 1 NC	3SB3251-0AA21	53.20		
		yellow ¹⁾	1 NO + 1 NC	3SB3251-0AA31	53.20		
		green ¹⁾	1 NO + 1 NC	3SB3251-0AA41	53.20		
		blue ¹⁾	1 NO + 1 NC	3SB3251-0AA51	53.20		
		white	1 NO + 1 NC	3SB3251-0AA61	53.20		
		clear ¹⁾	1 NO + 1 NC	3SB3251-0AA71	53.20		
		—	—	—	—		
		with integrated LED AC 230 V	red ¹⁾	1 NC	3SB3254-0AA21	43.55	0.04
	yellow ¹⁾		1 NO	3SB3253-0AA31	43.55		
green ¹⁾	1 NO		3SB3253-0AA41	43.55			
blue ¹⁾	1 NO		3SB3253-0AA51	43.55			
white	1 NO		3SB3253-0AA61	43.55			
clear ¹⁾	1 NO		3SB3253-0AA71	43.55			
red ¹⁾	1 NO + 1 NC		3SB3255-0AA21	53.20	0.047	1	
yellow ¹⁾	1 NO + 1 NC		3SB3255-0AA31	53.20			
green ¹⁾	1 NO + 1 NC		3SB3255-0AA41	53.20			
blue ¹⁾	1 NO + 1 NC		3SB3255-0AA51	53.20			
white	1 NO + 1 NC		3SB3255-0AA61	53.20			
clear ¹⁾	1 NO + 1 NC		3SB3255-0AA71	53.20			
—	—		—	—			
with BA 9s lamp holder without lamp	red ¹⁾		1 NC	3SB3207-0AA21	35.85	0.05	1
	yellow ¹⁾	1 NO	3SB3206-0AA31	35.85			
	green ¹⁾	1 NO	3SB3206-0AA41	35.85			
	blue ¹⁾	1 NO	3SB3206-0AA51	35.85			
	white	1 NO	3SB3206-0AA61	35.85			
	clear ¹⁾	1 NO	3SB3206-0AA71	35.85			
	red ¹⁾	1 NO + 1 NC	3SB3205-0AA21	45.50	0.06		
	yellow ¹⁾	1 NO + 1 NC	3SB3205-0AA31	45.50			
	green ¹⁾	1 NO + 1 NC	3SB3205-0AA41	45.50			
	blue ¹⁾	1 NO + 1 NC	3SB3205-0AA51	45.50			
	white	1 NO + 1 NC	3SB3205-0AA61	45.50			
	clear ¹⁾	1 NO + 1 NC	3SB3205-0AA71	45.50			
	—	—	—	—			

1) Inscription by inserting a label is possible.

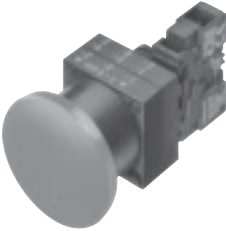








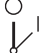
For assemblies with spring loaded contact blocks, add suffix -0CC0.

Pushbutton Units and Indicator Lights

SIRIUS Plastic 3SB3, ○ Round Design, 22 mm


Complete units

Selection and ordering data

	Version	Color of actuator/ Lock No.	Contacts for frontplate mounting	Order No.	List Price \$ 1 unit	Weight approx. kg	Pack Unit
Mushroom push-pull-button unit 	Mushroom push-pull button unit, Ø 40 mm, maintained, unlatching by pulling	red	1 NC	3SB32 03-1CA21	30.65	0.036	1
			1 NO + 1 NC	3SB32 01-1CA21	40.30	0.045	
EMERGENCY-STOP mushroom pushbutton unit 	EMERGENCY-STOP mushroom pushbutton unit, Ø 40 mm, maintained, with positive latching function, with turn unlatching mechanism, maintained	red	1 NC 	3SB32 03-1HA20	30.65	0.036	1
			1 NO + 1 NC 	3SB32 01-1HA20	40.30	0.045	
Selector switch 	Selector switch, 2 switching positions Switching sequence O-I, maintained, operating angle 50° 	black	1 NO	3SB32 02-2KA11	21.25	0.033	1
			1 NO + 1 NC	3SB32 01-2KA11	30.90	0.042	
Selector switch 	Selector switch, 3 switching positions Switching sequence I-O-II, maintained, operating angle 2 x 50° 	black	1 NO, 1 NO	3SB32 10-2DA11	30.90	0.043	1
			1 NO + 1 NC, 1 NO + 1 NC	3SB32 08-2DA11	50.20	0.061	
			1 NO, 1 NO	3SB32 10-2EA11	33.40	0.043	1
			1 NO + 1 NC, 1 NO + 1 NC	3SB32 08-2EA11	52.70	0.061	
RONIS key operated switch 	RONIS key-operated switch, flat, 2 switching positions Switching sequence O-I, maintained, with key removable in any position, 50° operating angle 	SB 30	1 NO	3SB32 02-4AD11	48.15	0.085	1
			1 NO + 1 NC	3SB32 01-4AD11	59.80	0.095	

EMERGENCY-STOP command devices acc. to EN 418 with yellow backing plate, Ø 80 mm, labelled, can also be used with 3TK28 contactor safety relays (see Section 13)



 Positive opening acc. to IEC 60 947-5-1, Appendix K, and DIN VDE 0660 Part 200.

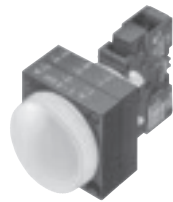
For assemblies with spring loaded contact blocks, add suffix -OCC0.

Pushbutton Units and Indicator Lights

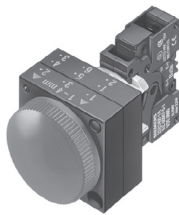
SIRIUS Plastic 3SB3, ○ Round Design, 22 mm

Complete units

Selection and ordering data



Indicator light with smooth lens



Indicator light with lens with concentric rings



Audible signal device



Drive for potentiometer



3RU19 00-1A with pushbutton and reset extension

Version	Color of lens	Operational voltage	Order No.	List Price \$ 1 unit	Weight approx. kg	Pack Unit
Indicator light with smooth lens						
with integrated LED UC 24 V	red		3SB3244-6AA20	31.50	0.03	1
	yellow		3SB3244-6AA30	31.50		
	green		3SB3244-6AA40	31.50		
	blue		3SB3244-6AA50	31.50		
	white		3SB3244-6AA60	31.50		
	clear		3SB3244-6AA70	31.50		
with integrated LED AC 110 V	red		3SB3248-6AA20	31.50	0.04	1
	yellow		3SB3248-6AA30	31.50		
	green		3SB3248-6AA40	31.50		
	blue		3SB3248-6AA50	31.50		
	white		3SB3248-6AA60	31.50		
	clear		3SB3248-6AA70	31.50		
with integrated LED AC 230 V	red		3SB3252-6AA20	31.50	0.04	1
	yellow		3SB3252-6AA30	31.50		
	green		3SB3252-6AA40	31.50		
	blue		3SB3252-6AA50	31.50		
	white		3SB3252-6AA60	31.50		
	clear		3SB3252-6AA70	31.50		
with BA 9s lamp holder without lamp	red		3SB3204-6AA20	23.80	0.04	1
	yellow		3SB3204-6AA30	23.80		
	green		3SB3204-6AA40	23.80		
	blue		3SB3204-6AA50	23.80		
	white		3SB3204-6AA60	23.80		
	clear		3SB3204-6AA70	23.80		
Indicator light with lens with concentric rings						
with integrated LED UC 24 V	red		3SB3244-6BA20	31.50	0.04	1
	yellow		3SB3244-6BA30	31.50		
	green		3SB3244-6BA40	31.50		
	blue		3SB3244-6BA50	31.50		
	white		3SB3244-6BA60	31.50		
	clear		3SB3244-6BA70	31.50		
with integrated LED AC 110 V	red		3SB3248-6BA20	31.50	0.04	1
	yellow		3SB3248-6BA30	31.50		
	green		3SB3248-6BA40	31.50		
	blue		3SB3248-6BA50	31.50		
	white		3SB3248-6BA60	31.50		
	clear		3SB3248-6BA70	31.50		
with integrated LED AC 230 V	red		3SB3252-6BA20	31.50	0.04	1
	yellow		3SB3252-6BA30	31.50		
	green		3SB3252-6BA40	31.50		
	blue		3SB3252-6BA50	31.50		
	white		3SB3252-6BA60	31.50		
	clear		3SB3252-6BA70	31.50		
with BA 9s lamp holder without lamp	red		3SB3204-6BA20	23.80	0.04	1
	yellow		3SB3204-6BA30	23.80		
	green		3SB3204-6BA40	23.80		
	blue		3SB3204-6BA50	23.80		
	white		3SB3204-6BA60	23.80		
	clear		3SB3204-6BA70	23.80		
Audible signal device, IP 65¹⁾						
Continuous tone (2.4 kHz) Min. operational current 10 mA Min. sound pressure 80 dB/10 cm		UC 24 V	3SB3233-7BA10	58.00	0.03	1
		UC 115 V	3SB3234-7BA10	58.00		
		230 V AC/DC	3SB3235-7BA10	58.00		
Drive for potentiometer¹⁾²⁾			3SB1000-7CH07	64.00	0.02	1
Mechanical RESET¹⁾						
Overload reset adapter Reset pushbutton IP65 Ø 22mm, 12 mm stroke		S00 to S10/S12	3RU19 00-1A	12.00	0.038	1 set
			3SB30 00-0EA11	15.50		
Reset extension		S10/S12	3SX1335	1.45	0.004	1 unit
Complete assembly			3SBES-RESET	35.00		
See Section 3 for dimensional data						

1) Cannot be used with 3SB38 enclosures.

2) The potentiometer is not included in the scope of supply.