

High-current terminal with screw terminal, Cross-section: 50-150 mm<sup>2</sup>, Width: 31mm, Color: gray

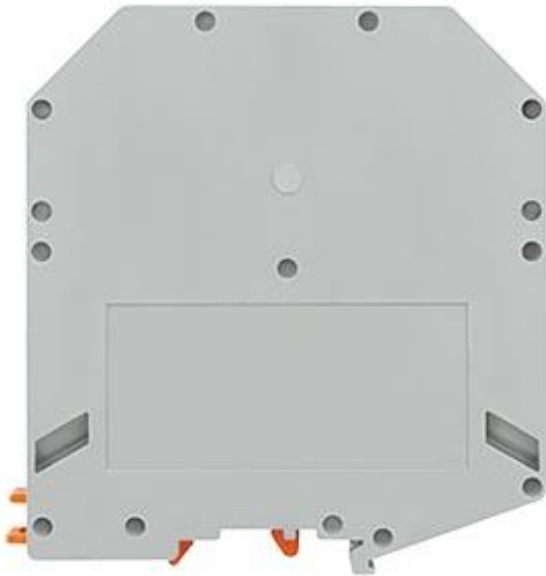


Figure similar

Model	
product brand name	ALPHA
product designation	ALPHA FIX terminal blocks
design of terminal / terminal levels internally linked	No
General technical data	
terminal contact spacing	31 mm
operating voltage / rated value	1 000 V
Protection class	
combustibility class acc. to UL 94	V0
Main circuit	
operating current / rated value	309 A
Appearance	
color	grey
Product details	
product component / required / connection plate	No

Number	
number of terminal levels	1
number of terminal points / per terminal level	2

Connections	
wire stripping length	40 mm
connectable conductor cross-section / solid	
• minimum	35 mm <sup>2</sup>
• maximum	150 mm <sup>2</sup>
connectable conductor cross-section / stranded	
• minimum	150 mm <sup>2</sup>
• maximum	150 mm <sup>2</sup>
connectable conductor cross-section / finely stranded	
• with core end processing / minimum	50 mm <sup>2</sup>
• with core end processing / maximum	150 mm <sup>2</sup>
• without core end processing / minimum	150 mm <sup>2</sup>
• without core end processing / maximum	150 mm <sup>2</sup>
tightening torque / with screw-type terminals	
• minimum	25 N·m
• maximum	30 N·m
type of electrical connection	
• 1	screw-type terminal
• 2	screw-type terminal
position / of the terminal	lateral

Mechanical Design	
height / with lowest-profile installation	26 mm
length	100 mm
mounting type	DIN rail 35 mm
net weight	361 g
material / of the insulating body	Other

Environmental conditions	
ambient temperature / during operation	
• minimum	-25 °C
• maximum	55 °C

Certificates	
design tested acc. to type of protection / EEx e	No

General Product Approval	Declaration of Con- formity	other
--------------------------	--------------------------------	-------



CSA



UR



EG-Konf.

[Miscellaneous](#)

## Further information

### Information- and Downloadcenter (Catalogs, Brochures,...)

<http://www.siemens.com/lowvoltage/catalogs>

### Industry Mall (Online ordering system)

<https://mall.industry.siemens.com/mall/en/en/Catalog/product?mlfb=8WH1000-0AS00>

### Service&Support (Manuals, Certificates, Characteristics, FAQs,...)

<https://support.industry.siemens.com/cs/ww/en/ps/8WH1000-0AS00>

### Image database (product images, 2D dimension drawings, 3D models, device circuit diagrams, ...)

[http://www.automation.siemens.com/bilddb/cax\\_en.aspx?mlfb=8WH1000-0AS00](http://www.automation.siemens.com/bilddb/cax_en.aspx?mlfb=8WH1000-0AS00)

### CAX-Online-Generator

<http://www.siemens.com/cax>

### Tender specifications

<http://www.siemens.com/specifications>