

WEISS INSTRUMENTS

Thermometers

Pressure Gauges

HVAC/R Instruments



LED REMOTE READING DIGITAL THERMOMETERS

Where customers prefer LED, Weiss offers our 2" retrofit unit, the 20DT. Now with 120Vac direct power (no transformer needed) and 1/2" high intensity red readout. All the digital thermometers are NSF listed. Both units feature a 9V DC battery back-up circuit that will display the temperature during a power outage (up to 36 hours).



Series DT - LED					
NSF Model	Cat. No.	Case	Range ¹	Sensor Length ³	IDN
DT	20DT-F	Front Flange	40/0/230°F	05ft	60520
DT	20DT-U	U-Clamp	40/0/230°F	05ft	60530
DT	24DT* ²	Back Mount	40/0/230°F	05ft.	60570

NOTES: 1. Equivalent °C available, consult Factory.
 2. Features °F/°C switch. 3. Longer line lengths available.
 Consult the Factory for 12V, 230V and Battery Back-up Kit.



LCD REMOTE READING DIGITAL THERMOMETERS



Weiss Instruments is the leader in Solar Powered technology* as we now offer seven different versions of our Digital thermometers. Available in low light version 56SD, (15 Lux) 25SD, 72SD, (30 Lux) and Series 20SD (75 Lux). These "self powered" thermometers operate without any batteries and offer an attractive and modern update to existing refrigeration equipment. Each thermometer has adjustable calibration, a ten second update time and wide ambient temperature specifications for both indoor and outdoor installations.

*Patent No. 5,196,781

Series SD - LCD					
NSF Model	Cat. No.	Case	Range ¹	Sensor Length ²	IDN
SD	20SD-B5	Back Flange	40/0/160°F	05ft	60110
SD	20SD-HL	Hanging	40/0/160°F	05ft	60160
SD	20SD-FS	Front Flange	40/0/160°F	05ft	60100
SD	25SD-160	Horiz. Wall Mount ³	40/0/160°F	05ft	60170
SD	56SD-160	Front Flange	50/0/160°F	05ft	60120
SD	72SD-F-160	Front Flange	40/0/160°F	05ft	60140
SD	72SD-U-160	U-Clamp	40/0/160°F	05ft	60150
Economy Battery Type Panel Meter					IDN
LC58	Panel Mount with clips		40/0/230°F	04ft	60205



1. Equivalent °C available, consult Factory.
 2. Longer line lengths available. 3. Offered in black or white case.

GENERAL PURPOSE THERMOMETERS



PLC120

PT220

DP300

DP300A

The instruments illustrated here are general purpose type. The group consists of bimetal dial, glass pocket clip, wall mounting, vertical and hanging bracket, indoor/outdoor and commercial 1/2" NPT bimetals for use in air ducts.

TYPE	CAT. NO.	RANGE	IDN
DIAL THERMOMETERS			
POCKET DIAL	PT125	25-125F	30110
POCKET DIAL	PT180	40-0-180F	30120
POCKET DIAL	PT220	0-220F	30130
HANGING or STANDING	25HBM	20-0-80F&C	39130
GLASS THERMOMETERS			
POCKET GLASS	PLC120	30-0-120F	39010
POCKET GLASS	PLC220	0-220F	39030
VERTICAL HANGING	HB120	40-0-120F&C	39110
HORIZONTAL HANGING	HZ80	40-0-80F&C	39120
DIGITAL THERMOMETERS			
POCKET DIGITAL/AUTO OFF	DP300	58-0-302F&C	39140
POCKET DIGITAL/WATERPROOF	DP300A	58-0-302F&C	39145
DRUM THERMOMETERS			
REMOTE MOUNTING	DR58	40-0-60F&C	42391

REFRIG / FREEZER THERMOMETERS



HZ80

25HBM

HB120

DR58

NSF REMOTE READING DIAL THERMOMETERS



The Weiss Line of Remote Reading Dial Thermometers offers a wide variety of dial sizes and case configurations to match any installation. All items are furnished in attractive stainless steel cases and all models are NSF listed. Additional features include smart color zoned dual scales and tin plated thermal systems.

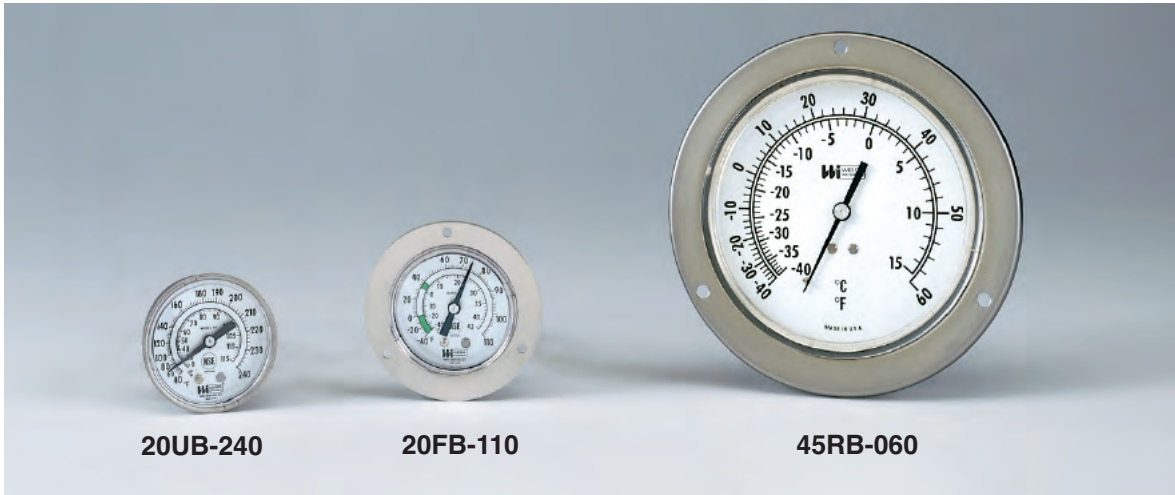
2" DIAL SIZE

SERIES FB - FRONT FLANGE BACK CONNECT					SERIES HL - HANGING BRACKET LOWER CONNECT				
NSF MOD.	CAT. NO.	RANGE	CAPILLARY	IDN	NSF MOD.	CAT. NO.	RANGE	CAPILLARY	IDN
RF	21FB-060	40-0-60 F&C	48"	40110	RH	21HL-060	40-0-60 F&C	48"	40170
RF	21FB-960	40-0-60 F&C	9"	40115	HF	21HL-240	40-240 F&C	48"	40180
RF	21FB-260	40-0-60 F&C	20 FT	40120					
RF	20FB-110	40-0-110 F&C	48"	40130					
HF	20FB-240	40-240 F&C	48"	40140					
SERIES FL - FRONT FLANGE LOWER CONNECT									
NSF MOD.	CAT. NO.	RANGE	CAPILLARY	IDN					
HF	20FL-240	40-240 F&C	48"	40160					
SERIES BB - BACK FLANGE BACK CONNECT					SERIES UB - U CLAMP BACK CONNECT				
NSF MOD.	CAT. NO.	RANGE	CAPILLARY	IDN	NSF MOD.	CAT. NO.	RANGE	CAPILLARY	IDN
RF	20BB-060	40-0-60 F&C	48"	40220	RU	21UB-060	40-0-60 F&C	48"	40190
RF	20BB-110	40-0-110 F&C	48"	40230	W	20UB-220	100-220 F&C	48"	40210
HF	20BB-240	40-240 F&C	48"	40240	HU	20UB-240	40-240 F&C	48"	40200

2 1/2" DIAL SIZE

SERIES FB - FRONT FLANGE BACK CONNECT					SERIES HL - HANGING BRACKET LOWER CONNECT				
NSF MOD.	CAT. NO.	RANGE	CAPILLARY	IDN	NSF MOD.	CAT. NO.	RANGE	CAPILLARY	IDN
RF	25FB-060	40-0-60 F&C	48"	40250	RH	25HL-060	40-0-60 F&C	48"	40280
RF	25FB-110	40-0-110 F&C	48"	40260					
HF	25FB-240	40-240 F&C	48"	40270					
SERIES BB - BACK FLANGE BACK CONNECT					SERIES PB - PLAIN W/LOCK NUT BACK CONNECT				
NSF MOD.	CAT. NO.	RANGE	CAPILLARY	IDN	NSF MOD.	CAT. NO.	RANGE	CAPILLARY	IDN
RF	25BB-110	40-0-110 F&C	48"	40295	RU	25PB-060	40-0-60 F&C	48"	40290

NSF REMOTE READING DIAL THERMOMETERS



20UB-240

20FB-110

45RB-060

4 1/2" DIAL SIZE

SERIES RB - FRONT FLANGE BACK CONNECT					SERIES BB - BACK FLANGE BACK CONNECT				
NSF MOD.	CAT. NO.	RANGE	CAPILLARY	IDN	NSF MOD.	CAT. NO.	RANGE	CAPILLARY	IDN
RF	45RB-060	40-0-60 F&C	48"	40310	RF	45BB-060	40-0-60 F&C	48"	40350
RF	45RB-260	40-0-60 F&C	20 FT	40320	RF	45BB-260	40-0-60 F&C	20 FT	40360
RF	45RB-110	40-0-110 F&C	48"	40330	RF	45BB-110	40-0-110 F&C	48"	40370
HF	45RB-240	40-240 F&C	48"	40340	HF	45BB-240	40-240 F&C	48"	40380

UNION CONNECTED DIAL THERMOMETERS



45BL-100

Offered in 3 1/2" and 4 1/2" dial sizes the Series BL is furnished with braided copper capillary and a 1/2" NPT brass union connection. Sensor bulb insertion is 2 5/8" below the mounting thread.

Case configuration is stainless steel back flange type for wall or surface mounting, capillary outlet at case bottom.*

The Series BL construction is well suited to applications such as hot and chilled pipeline systems, tanks, coolers and air ducts.

DIAL SIZE	CAT. NO.	RANGE	CAPILLARY	IDN
3 1/2"	35BL-060	40-0-60 F&C	5 FT	42070
3 1/2"	35BL-110	40-0-110 F&C	5 FT	42080
3 1/2"	35BL-100	20-0-100 F&C	5 FT	42090
3 1/2"	35BL-180	0-180 F&C	5 FT	42100
3 1/2"	35BL-240	40-240 F&C	5 FT	42110
4 1/2"	45BL-060	40-0-60 F&C	5 FT	42010
4 1/2"	45BL-110	40-0-110 F&C	5 FT	42020
4 1/2"	45BL-100	20-0-100 F&C	5 FT	42030
4 1/2"	45BL-180	0-180 F&C	5 FT	42040
4 1/2"	45BL-240	40-240 F&C	5 FT	42050

* Also available with back outlet, specify 35BB or 45BB.

DIGITAL VARI-ANGLE THERMOMETERS



The Weiss patented,* Digital Vari-angle® Thermometer maintains the strict requirements for thermometers in hydronic applications in that they're self-powered and within 1% accuracy. This reliable series of digital thermometers offers the added feature of stem assemblies for direct replacement of mercury-in-glass types where environmental concerns exist. Whether on new installations or replacements, our Vari-angle Digital Thermometers include the same level of quality that the industry associates with the Vari-angle trademark and all Weiss Products.

*Patent No. 5,196,781 ©Vari-angle is a registered trademark of Weiss Instruments, Inc.

SPECIFICATIONS

CASE	Hi-impact ABS
RANGE with F/C Switch	-50/300°F -45/150°C
DISPLAY	1/2" LCD digits, wide ambient formula
ACCURACY	1% of reading or 1° whichever is greater
RESOLUTION	1/10° between -19.9/199.9°F (-28/93°C)
RECALIBRATION	Internal potentiometer
LUX RATING	10 Lux (one foot-candle)
UPDATE	10 seconds
AMBIENT OPERATING	-30/140°F (-35/60°C)
AMBIENT TEMP ERROR	Zero
HUMIDITY	100%
SENSOR	Glass passivated thermistor - NTC
STEM ASSEMBLIES	INDUSTRIAL GLASS Full conformance with Fed Spec GG-T-321D. Fully interchangeable with Industrial Glass Thermometers.
	BIMETALLIC Full conformance with ASME B40.3 - 1990. Fully interchangeable with Bimetallic Dial Thermometers.

DVU35

E35-75BS



DVD6

CAT. NO.	DESCRIPTION	IDN
DVU35	3 1/2" Industrial Stem	62100
DVU6	6" Industrial Stem	62110
E35-75BS*	3/4" NPT 3 1/2" Socket	20300
ER6-75BS*	3/4" NPT 6" Socket	20500
EN6-75BS*	3/4" NPT 6" Ext. Socket	20501
DVBM25	2 1/2" x 1/2" NPT Stem	62120
DVBM4	4" x 1/2" NPT Stem	62130
DVBM6	6" x 1/2" NPT Stem	62140
DVD6	6" Stem w/ Duct Mtg. Flange	62310
DVD9	9" Stem w/ Duct Mtg. Flange	62320

*For use with DVU thermometers on new installations.

INFRA-RED THERMOMETERS



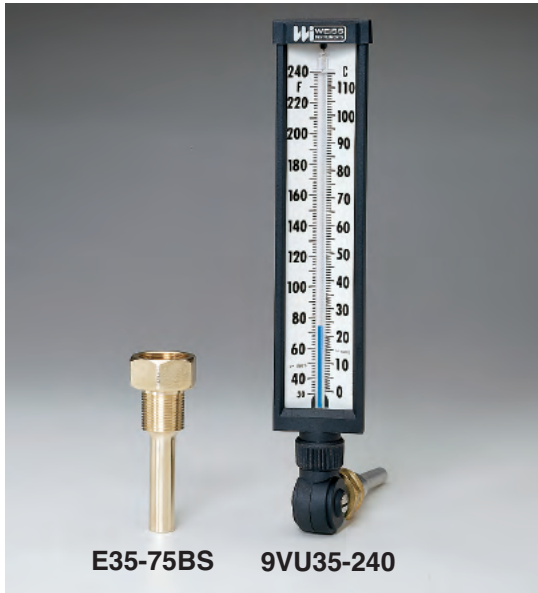
IR141

This Professional Grade Infra-red Thermometer is one of the most advanced units manufactured today. Using the remote dual point Infa-red Thermometer gets the job done quick, accurate and safe. It's easy to use and applicable for almost any temperature measurement, including HVAC balancing, motor temperatures, air conditioning and hot/chilled water pipe lines.

Cat. No.	Range (Switchable)	IDN
IR141	-58/986°F -50/530°C	60207

- 14:1 Ratio
- Dual Laser Pointer
- Pistol Grip Design
- Back Light
- ± 1% Accuracy
- °F/°C Selection
- Auto Off

INDUSTRIAL GLASS THERMOMETERS



Weiss 9" Scale Vari-angle Thermometers are the industry standard for HVAC applications. Union connection stem is offered for pipe-line applications, for chilled and hot water installations with a 3 1/2" stem. Perforated 6" stem with a mounting flange is for air duct use. Blue Liquid is standard.

UNION CONN. STEM			SOCKETS		
CAT. NO.	RANGE	IDN	CAT. NO.	DESCRIPTION	IDN
9VU35-110	40-0-110F&C	20315	E35-75BS*	3/4"NPT 3 1/2" Socket	20300
9VU35-120	0-120F&C	20325	ER6-75BS*	3/4"NPT 6" Socket	20500
9VU35-160	0-160F&C	20335	EN6-75BS*	3/4"NPT 6" Ext.Socket	20501
9VU35-180	30-180F&C	20345	AIR DUCT STEM		
9VU35-240	30-240F&C	20355	CAT. NO.	RANGE	IDN
9VU35-300	30-300F&C	20365	9VD6-120	0-120F&C	20420
9VU6-110	40-0-110F&C	20510	9VD6-160	0-160F&C	20430
9VU6-120	0-120F&C	20520	9VD6-180	0-180F&C	20440
9VU6-160	0-160F&C	20530			
9VU6-180	30-180F&C	20540			
9VU6-240	30-240F&C	20550			

*For use with 9VU thermometers on new installations.

TRADE LINE THERMOMETERS



Weiss TL Thermometers are intended for small pipeline applications for chilled and hot water installations. The compact design is also suitable to limited space requirements. Units are furnished with 5" scale and 2" stem including a 1/2" NPT separable socket.

STRAIGHT FORM TYPE			ANGLE FORM TYPE		
CAT. NO.	RANGE	IDN	CAT. NO.	RANGE	IDN
TL5S2-110	-40-0-110F&C	20213	TL5A2-110	-40-0-110F&C	20215
TL5S2-120	20-120F&C	20203	TL5A2-120	20-120F&C	20205
TL5S2-180	20-180F&C	20223	TL5A2-180	20-180F&C	20225
TL5S2-240	30-240F&C	20204	TL5A2-240	30-240F&C	20206
TL5S2-300	30-300F&C	20214	TL5A2-300	30-300F&C	20226

REFRIGERATION GAUGES

- Colored Liquid Filled Cases
- Guaranteed ANSI Grade B Accuracy

• Heavy Duty Internals on 4 1/2" Gauge

• Stainless Steel Case



These gauges are designed for the pressure measurement of refrigeration systems. Most dials are furnished with corresponding temperature scales for the various refrigerants shown below. Standard connections are 1/8" NPT bottom and back for manifold gauges and 1/4" NPT for all other versions.

TYPE	CAT. NO.	RANGE	REFRIG.SCALE	CASE	ACCURACY	NPT	IDN	
Dry 2 1/2" Dial Manifold	RG25-120-8L	30-0-120 PSI	R12, R22, R502	STAINLESS STEEL	ANSI GRADE B	1/8"	83035	
	RG25-500-8L	0-500 PSI	R12, R22, R502	RED/BLUE	2% MID SCALE			83045
Liquid Filled 2 1/2" Dial Manifold	LFM502H-8L	0-500PSI	R12, R22, R502	STAINLESS STEEL	ANSI GRADE B	1/8"	83020	
	LFM502L-8L	30-0-120PSI	R12, R22, R502	RED/BLUE	2% MID SCALE			83010
	LFM507H-8L	0-500PSI	R134a,404A, 507	STAINLESS STEEL	ANSI GRADE B			83031
LFM507L-8L	30-0-120PSI	R134a,404A, 507	RED/BLUE	2% MID SCALE	83032			
Liquid Filled 2 1/2" Dial Panel Mount	LFM410H-8L	0-800PSI	R410A	STAINLESS STEEL	ANSI GRADE B	1/8"	83033	
	LFM410L-8L	30-0-250PSI	R410A	RED/BLUE	2% MID SCALE			83034
	LFM502HF-8B	0-500PSI	R12, R22, R502	STAINLESS STEEL	ANSI GRADE B			1/8"
LFM502LF-8B	30-0-120PSI	R12, R22, R502	FRONT FLANGE	2% MID SCALE	83027			
Liquid Filled 2 1/2" Dial Panel Mount	LFM502HU-8B	0-500PSI	R12, R22, R502	STAINLESS STEEL	ANSI GRADE B	1/8"	83029	
	LFM502LU-8B	30-0-120PSI	R12, R22, R502	U-CLAMP	2% MID SCALE			83028
2 1/2" Dial Liquid Filled Stem Mount	LF251-030-4L	0-30 PSI	NOT FURNISHED	STAINLESS STEEL	ANSI GRADE B	1/4"	83051	
	LF251-060-4L	0-60 PSI						83052
	LF251-100-4L	0-100 PSI						83053
	LF251-160-4L	0-160 PSI						83054
	LF251-200-4L	0-200 PSI						83055
	LF251-300-4L	0-300 PSI						83056
	LF251-600-4L	0-600 PSI						83057
2 1/2" Dial Liquid Filled Front Flange	LF251F-300-4B	0-300 PSI	NOT FURNISHED	STAINLESS STEEL	ANSI GRADE B	1/4"	84120	
	LF251F-600-4B	0-600 PSI						84160
	LF251F-V150-4B	30-0-150 PSI						84210
	LF251F-V300-4B	30-0-300 PSI						84220
3 1/2" Dial Back Flange	RG35-V150-4L	30-0-150 PSI	R12, R22, R502	STAINLESS STEEL	ANSI GRADE A	1/4"	83030	
	RG35-V300-4L	30-0-300 PSI	R12, R22, R502					83040
	RG35-0300-4L	0-300 PSI	R12, R22, R502					83050
	RG35-0500-4L	0-500 PSI	R12, R22, R502					83060
4 1/2" Dial Back Flange	4RGB1-V150-4L	30-0-150 PSI	R12, R22, R502	ALUMINUM	ANSI GRADE 1A	1/4"	83070	
	4RGB1-V300-4L	30-0-300 PSI	R12, R22, R502					1% FULL SCALE

TEMP / PRESSURE TEST PLUGS

Weiss Temperature/Pressure Plugs allows for quick, efficient and accurate testing of hydronic pipe lines throughout HVAC systems. Offered in both nardel (blue cap) for hot and chilled water and neoprene (red cap) for natural gas. Weiss plugs are consistently rated at 1000 psi. The self-sealing core insures long life and continuous service.



BP25-NP

CAT. NO.	DESCRIPTION	BODY & CAP	IDN
BP25-NR	1/4" NPT Nordel	Brass	90101
BP25-NP	1/4" NPT Neoprene	Brass	90102
BP50-NR	1/2" NPT Nordel	Brass	90103
BP50-NP	1/2" NPT Neoprene	Brass	90104
BP25L-NR	1/4" NPT Nordel w/ 13/4" Lag	Brass	90105
BP25L-NP	1/4" NPT Neoprene w/ 13/4" Lag	Brass	90106

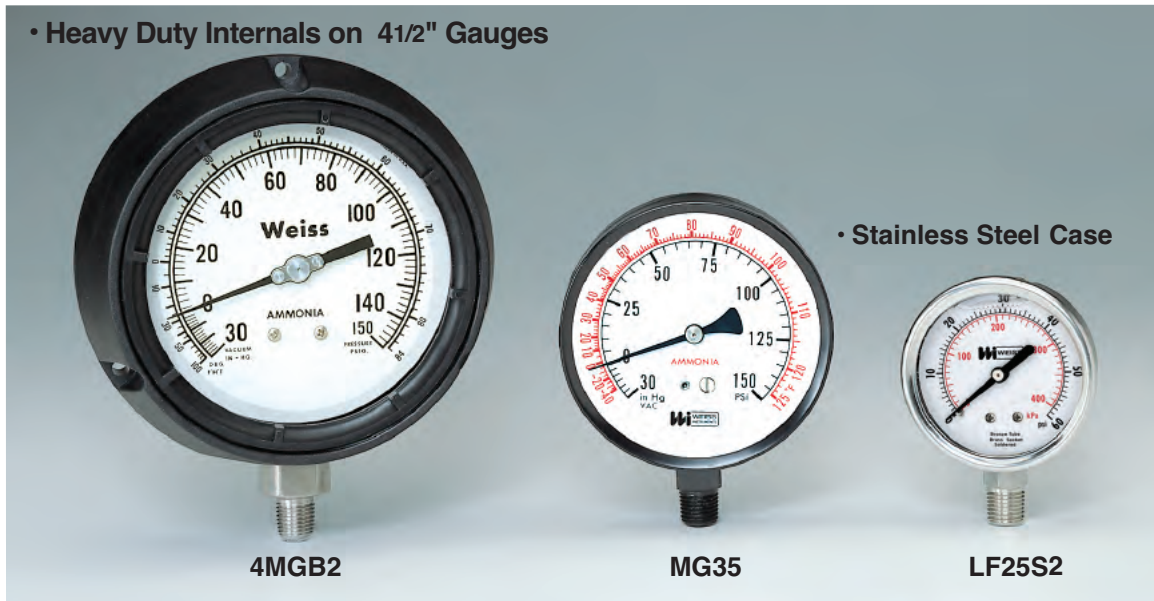
CAT. NO.	ACCESSORIES	IDN
TPK	Test Kit	90120
GA18	Gauge Adapter	90125
PT220	1" Dial Pocket Test 0/220°F	90130
PT125	1" Dial Pocket Test 0/125°F	90110
TL25-030-4L	2 1/2" Gauge 0-30 psi	90131
TL25-160-4L	2 1/2" Gauge 0-160 psi	90134



BP25L-NR
BP50-NR

AMMONIA GAUGES

• Heavy Duty Internals on 4 1/2" Gauges



• Stainless Steel Case

These gauges are designed for the pressure measurement of any system or equipment charged with ammonia. Most dials are furnished with corresponding temperature scales. Black inner arc indicates pressure. Red outer arc indicates corresponding temperature. All gauges are equipped with restrictors to protect the gauges against pulsating pressure.

TYPE	CAT. NO.	RANGE	CASE	TUBE & SOCKET	ACCURACY	IDN
2 1/2" Dial Liquid Filled Stem Mount	LF25S2-V150-4L	30-0-150 PSI	STAINLESS STEEL	316 S.S.	ANSI GRADE B 2% MID SCALE	84610
	LF25S2-V300-4L	30-0-300 PSI				84620
2 1/2" Dial 3 1/2" Dial Stem Mount	MG25-V150-4L-PT	30-0-150 PSI	BLACK STEEL	316 S.S. TUBE STEEL SOCKET	ANSI GRADE B 2% MID SCALE	83110
	MG25-V300-4L-PT	30-0-300 PSI				83115
	MG35-V150-4L-PT	30-0-150 PSI				83120
	MG35-V300-4L-PT	30-0-300 PSI				83130
4 1/2" Dial Back Flange	4MGB2-V150-4L	30-0-150 PSI	ALUMINUM	316 S.S.	ANSI GRADE A 1% MID SCALE	83140
	4MGB2-V300-4L	30-0-300 PSI				83150

DIAPHRAGM GAUGES



The Weiss Series DG Gauges are used in the measurement of pressures below 10 psi. This line of diaphragm gauges offers an instrument highly sensitive yet durably constructed. Utilizing a thin walled copper-alloy, the diaphragm senses slight pressure or vacuum and expands or contracts. The action of the element is quickly and accurately indicated within 1.5% of full scale range. Some of the uses are filter monitoring, leak testers and LP gas.

CASE-Black drawn steel, with twist lock polycarbonate window. DIAPHRAGM-Copper alloy.

SOCKET-Brass, 1/4" NPT lower or center back connection. MOVEMENT-Brass.

SIZE -2 1/2" DIAL-White coated metal lithographed with black graduations lines and numerals. POINTER-Balanced design, aluminum in black finish.

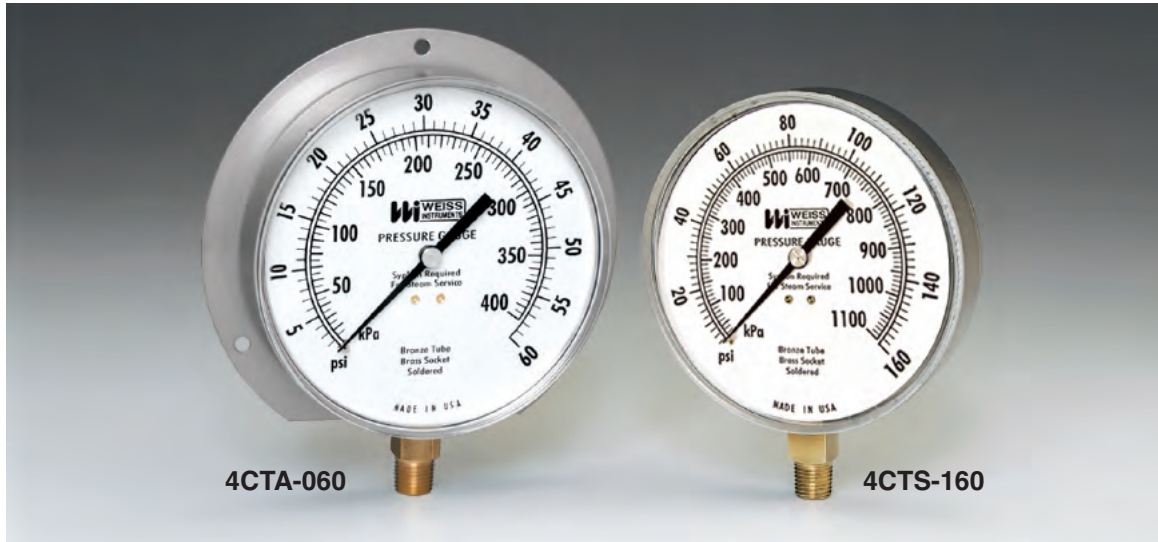
SERIES & TYPE	+ RANGE CODE			+ CONNECTION
	TYPE	CODE	RANGE	
DG25C Combination Pressure Dial	C	100	100"WP&60 oz/in	4L (1/4" NPT Lower)
DG25P Pressure Dial	C	145	35"WP&20 oz/in	4B (1/4" NPT Back)
DG25V Vacuum Dial	C	015	15"WP&9 oz/in	
	P	003	0-3 PSI	
	P	005	0-5 PSI	
	P	010	0-10 PSI	
	P	015	0-15 PSI	
	P	030	0-30" WP	
	P	060	0-60" WP	
	P	100	0-100" WP	
	V	030	30-0" WV	
	V	060	60-0" WV	
	V	100	100-0" WV	

PRESSURE	COMBINATION	
	IN. WATER OUTER SCALE	OZ. WATER INNER SCALE
Range		
0-3 psi*		
0-5 psi	0-35	0-20
0-10 psi	0-15	0-9
inch / water	0-60	0-35
0-15		
0-30		
0-60		
0-100		
oz.-sq. in.	VACUUM - in water vac.	
	RANGE	
0-10	30-0	
0-15*	60-0	
0-30	100-0	
0-100		

Ex: DG25P-005-4L Pressure Dial 0-5 PSI, 1/4" NPT Lower Connection

* Lower Connection only

HVAC GAUGES



Weiss CTS/CTA Pressure Gauges are designed to meet the standard specifications for Heating, Cooling and Air Conditioning applications. Two types are offered for either stem or surface mounting. Both versions conform with ANSI B40.1 accuracy Grade 1A% full scale.

STAINLESS STEEL CASE STEM MOUNTED			STAINLESS STEEL CASE-BACK FLANGE SURFACE MOUNTED		
CAT. NO.	RANGE	IDN	CAT. NO.	RANGE	IDN
4CTS-015	0-15 PSI	82010	4CTA-015	0-15 PSI	82110
4CTS-030	0-30 PSI	82020	4CTA-030	0-30 PSI	82120
4CTS-060	0-60 PSI	82030	4CTA-060	0-60 PSI	82130
4CTS-100	0-100 PSI	82040	4CTA-100	0-100 PSI	82140
4CTS-160	0-160 PSI	82050	4CTA-160	0-160 PSI	82150
4CTS-200	0-200 PSI	82060	4CTA-200	0-200 PSI	82160
4CTS-300	0-300 PSI	82070	4CTA-300	0-300 PSI	82170
4CTS-VAC	0-30" HG VAC	82080	4CTA-VAC	0-30" HG VAC	82180
4CTS-V30	30-0-30 PSI	82090	4CTA-V30	30-0-30 PSI	82190
4CTS-V60	30-0-60 PSI	82100	4CTA-V60	30-0-60 PSI	82200

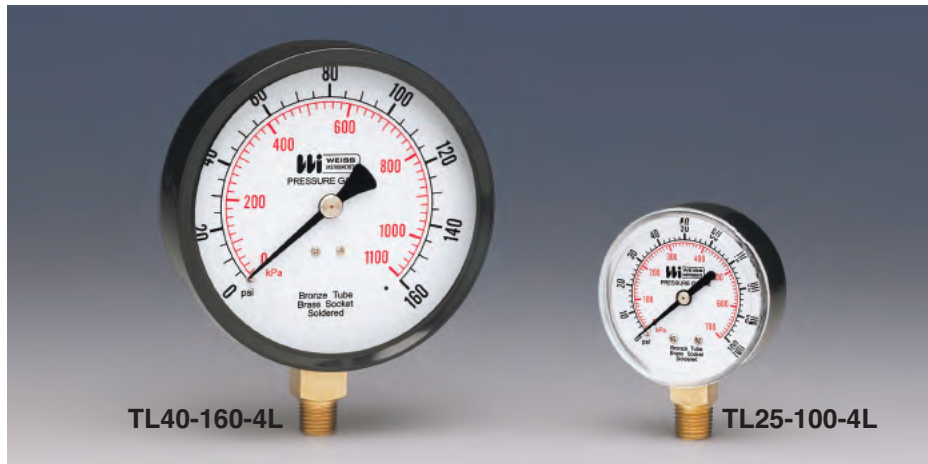
TRI-O-METERS

The Weiss Tri-o-meter is designed for use on all types of hot water heating systems. One instrument reads the water pressure, water temperature and system head in feet of H₂O. Available in 2 1/2" dial with 1/4" NPT rear connection and 3 1/2" dial with 1/2" NPT lower or rear connected.

Series C	0-75 psi & Ft. of H ₂ O	60-260F&C
H	0-200 psi & kPa	80-320F&C
CAT. NO.	DESCRIPTION	IDN
CTP25R	1/4" NPT Rear	28807
CTP25RX	1/4" NPT Rear x 2" Ext.	28808
CTP40RSX	1/2" NPT Rear	28810
CTP40L	1/2" NPT Lower	28811
HTP40RSX	1/2" NPT Rear	28812
HTP40L	1/2" NPT Lower	28813



TRADE LINE GAUGES



Weiss TL Gauges are intended for general service conditions, for pressure or vacuum on air, oil, water, gas or other mediums that do not attack brass. TL Gauges are furnished in drawn steel cases, finished in black. The 1 1/2" dials are supplied with 1/8" NPT and 2" dial versions are available with 1/4" or 1/8" NPT connections. All other dial sizes are 1/4" NPT. All gauges conform with ANSIB40.1 accuracy Grade B-2% mid scale.

1 1/2" DIAL 1/8" NPT LOWER CONN.			1 1/2" DIAL 1/8" NPT BACK CONN.		
CAT. NO.	RANGE	IDN	CAT. NO.	RANGE	IDN
TL15-030-8L	0-30 PSI	80010	TL15-030-8B	0-30 PSI	80035
TL15-060-8L	0-60 PSI	80015	TL15-060-8B	0-60 PSI	80040
TL15-100-8L	0-100 PSI	80020	TL15-100-8B	0-100 PSI	80045
TL15-160-8L	0-160 PSI	80025	TL15-160-8B	0-160 PSI	80050
TL15-200-8L	0-200 PSI	80030	TL15-200-8B	0-200 PSI	80055
2" DIAL 1/4" NPT LOWER CONN.			2" DIAL 1/8" NPT LOWER CONN.		
CAT. NO.	RANGE	IDN	CAT. NO.	RANGE	IDN
TL20-015-4L	0-15 PSI	80101	TL20-030-8L	0-30 PSI	80116
TL20-030-4L	0-30 PSI	80102	TL20-060-8L	0-60 PSI	80117
TL20-060-4L	0-60 PSI	80103	TL20-100-8L	0-100 PSI	80118
TL20-100-4L	0-100 PSI	80104	TL20-160-8L	0-160 PSI	80119
TL20-160-4L	0-160 PSI	80105	TL20-200-8L	0-200 PSI	80120
TL20-200-4L	0-200 PSI	80106	TL20-300-8L	0-300 PSI	80121
TL20-300-4L	0-300 PSI	80107	TL20-VAC-8L	0-30" HG VAC	80122
TL20-VAC-4L	0-30" HG VAC	80108	TL20-V150-8L	30-0-150 PSI	80112
TL20-V30-4L	30-0-30 PSI	80109			
TL20-V100-4L	30-0-100 PSI	80111			
2 1/2" DIAL 1/4" NPT LOWER CONN.			4" DIAL 1/4" NPT LOWER CONN.		
CAT. NO.	RANGE	IDN	CAT. NO.	RANGE	IDN
TL25-015-4L	0-15 PSI	80130	TL40-015-4L	0-15 PSI	80160
TL25-030-4L	0-30 PSI	80131	TL40-030-4L	0-30 PSI	80161
TL25-060-4L	0-60 PSI	80132	TL40-060-4L	0-60 PSI	80162
TL25-100-4L	0-100 PSI	80133	TL40-100-4L	0-100 PSI	80163
TL25-160-4L	0-160 PSI	80134	TL40-160-4L	0-160 PSI	80164
TL25-200-4L	0-200 PSI	80135	TL40-200-4L	0-200 PSI	80165
TL25-300-4L	0-300 PSI	80136	TL40-300-4L	0-300 PSI	80166
TL25-VAC-4L	0-30" HG VAC	80137	TL40-VAC-4L	0-30" HG VAC	80167
TL25-V30-4L	30-0-30 PSI	80138	TL40-V30-4L	30-0-30 PSI	80168
TL25-V60-4L	30-0-60 PSI	80139	TL40-V60-4L	30-0-60 PSI	80169
TL25-V100-4L	30-0-100 PSI	80140	TL40-V100-4L	30-0-100 PSI	80170
TL25-V150-4L	30-0-150 PSI	80141	TL40-V150-4L	30-0-150 PSI	80171

Throughout the 20th century, the Weiss name has been synonymous with quality and reliability in instrumentation. Some of the products we have manufactured for more than 133 years are proudly illustrated in this catalog, dedicated to your requirements in the air-conditioning, refrigeration and heating industry. Whether you require instruments for temperature or pressure monitoring, the Weiss line offers a full range of outstanding products from which to choose. Our commitment to quality extends well beyond the products we provide. Each day we strive to offer our customers responsive service and reliable deliveries, qualities so necessary in today's business climate. Weiss understands the trends of today's market and we look forward to proving our ability to react to the daily challenge.

Quality products, Responsive service, Reliable delivery . . . Your customers demand it, the Weiss HVAC/R program provides it.

The Weiss Corrugated Display is eye-catching and can be set-up in high traffic areas. The versatile display allows for easy placement of packages for a neat and uniform look to showcase the instruments.

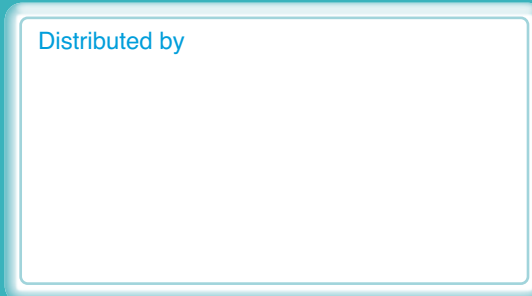


The packaging allows a full view of the package contents and is suitable for counter standing display.



WEISS INSTRUMENTS, LLC.
905 WAVERLY AVE., HOLTSVILLE, NY 11742
TEL: 631- 207-1200 • FAX: 631.207.0900
www.weissinstruments.com

Distributed by



Sales Representatives in all Principal Cities • Since 1882