

Platinum Temperature Sensors



ACI/100 Series
ACI/1K Series



Product Description

The ACI/100 and ACI/1K Series temperature sensors incorporate a Class A, Thin Film Platinum RTD sensor which conforms to DIN-IEC-751 platinum RTD standards.

These sensors are available in either two or three-wire configurations, incorporating high accuracy and interchangeability throughout a wide operating temperature range.

These units are offered in Room, Room with Set Point, Room with Override, Room with Setpoint and Override, and Room with Setpoint, Override, and RJ11 Jack, Stainless Steel Duct and Duct without Box, Immersion, Stainless Plate, Raw, Bendable Copper and Stainless Steel Rigid Averaging, Strap-On, Bullet Probe and Outdoor Air Configurations.

Setpoint options include a linear 400 Ohm, 1K, 2K, 3K, 5K, 8.5K, 10K, 20K, or 100K potentiometer. An optional series resistor allows for any offset of the setpoint potentiometer. Setpoint potentiometers may be set up as either Direct or Reverse Acting.

Indication stickers for setpoint include Cool/Warm, 55 to 85, and 10 to 30°C. Others are available upon request.

Override options include a N/O switch in parallel with the sensor or a separate 2 pole terminal block for Tenant override.

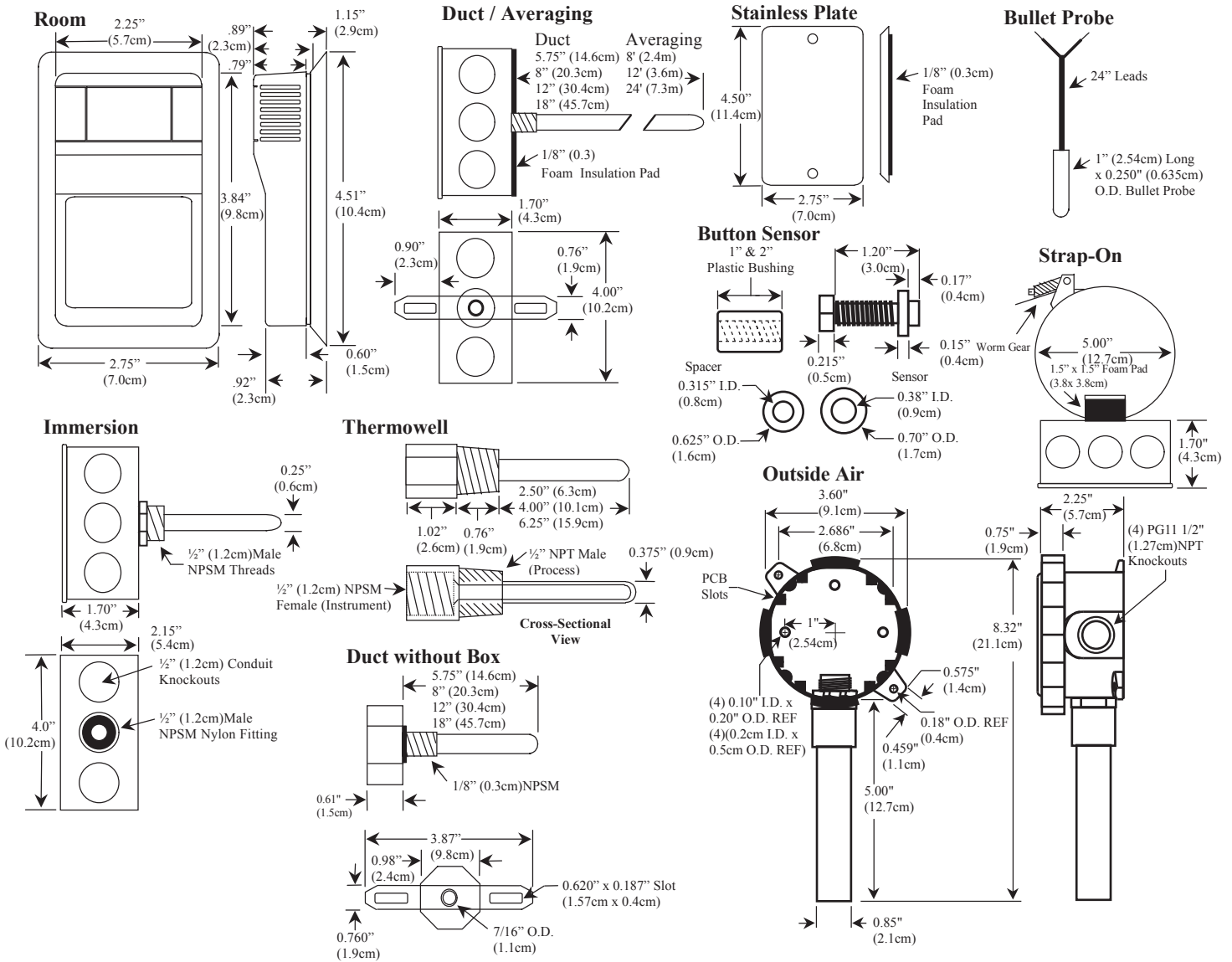
All ACI Room sensors may be ordered with an optional 4 pin RJ11 or 6 pin RJ12 communication jack with terminal blocks, for remote programming. These units are also available with a 1/8" RS232 Stereo Jack.

All of these units come with a two year factory warranty. Please contact ACI for further information regarding any of these products.

Product Specifications

Output	100 Ohms @ 32°F (0°C) 1K Ohms @ 32°F (0°C)	Resistance Characteristics	+/- 0.06% Class A (Standard) +/- 0.12% Class B (Averaging)
Temp. Coefficient	0.00385 Ohm/Ohm/°C	Repeatability	+/-0.1°C
Standardization	DIN-IEC-751(formerly DIN 43760)	Stability	less than +/- 0.1°C drift
Accuracy	+/- 0.06% @ 32°F Single Point +/- 1.0 Ohm @ 70°F (Averaging)	Single Point Temp Span	-58 to 392°F (-50 to 200°C)
		Averaging Temp Span	-50 to 275°F (-45.5 to 134.8°C)

Dimensions



Ordering Information

A/	Sensor	# Wires	Configuration	Communication Jack	Pot Value	Setpoint Indicator	Pot Action
	[]	- []	- []	- []	- []	- []	- []
	100	2W (2-Wire)	R - Room	RJ4 (4 Pin RJ11)	400	Cool Warm	DA (Direct)
	1K	3W (3-Wire)	RS - Room w/ Setpoint	RJ6 (6 Pin RJ12)	1K	55 to 85	RA (Reverse)
			RO - Room w/ Override	RS232 (Stereo Jack)	2K	10 to 30°C	
			RSO - Room w/ Setpoint & Override		3K		
			D - Duct 4", 8", 12", 18"		5K		
			DO - Duct without box 4", 8", 12", 18"		8.5K		
			I - Immersion 2.5", 4", 8"		10K		
			A - Bendable Copper Averaging 12', 24'		20K		
			RA - Rigid Averaging 18", 24", 36"		100K		
			S - Strap On				
			O - Outdoor Air				
			SP - Stainless Plate				
			BP - Bullet Probe				
			W - Raw				
			BBS - Brass Button Sensor				
			SBS - Stainless Button Sensor				

CE For CE compliance, sensor leads must be no longer than 3 meters in length. Additionally, certain product variations may not be CE compliant. Contact ACI for further details

Example: A/100 -2W -RSO -RJ6 -20K -55 to 85 -DA or A/1K-3W-D-8" or A/1K-A-24"