



### General Description

These 2-Way aluminum body valves meet the safety standards for commercial industrial and institutional kitchens set by the National Fire protection Association.

Paragraph 1023 in booklet NFPA #96 - "Ventilation of Cooking Equipment" states, "The operation of an extinguishing system shall automatically shut off all sources of fuel and heat to gas pilots. A manual operation shall be required to reestablish the fuel supply or heat supply."

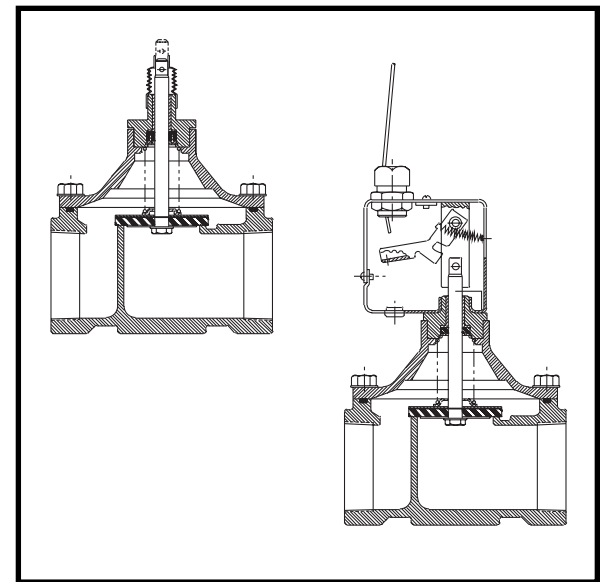
### Construction

Valve Parts in Contact with Fluids	
Body	Aluminum
Seals and Disc	NBR
Core Tube	305 Stainless Steel
Core and Plugnut	430F Stainless Steel
Springs	302 Stainless Steel

### Types of Operation

Series HV216-585 closes to shut off gas flow when the cable holding it in the open position is released.  
Catalog No. HV216-585 replaces HV160-265.

Series JV216-587 closes to shut off gas flow when the cable is pulled. Catalog No. JV216-587 replaces JV182-648



### Approvals:

UL Component listed, File No. MH-8849, Guide No. YRPV2;  
UL of Canada, File MH27283, Guide No. 167E49.

Specifications

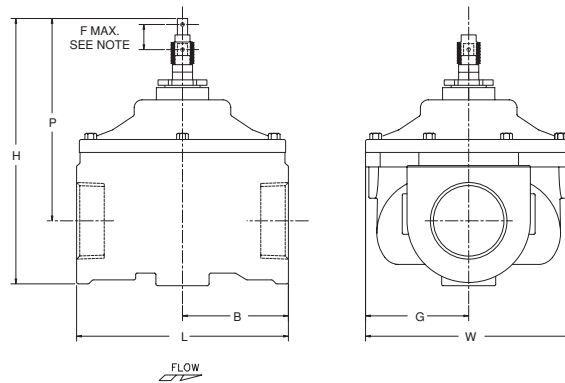
Pipe Size (ins.)	Orifice Size (ins.)	CV Flow	Fluid & Ambient Temp. °F		Operating Pressure Differential (psi)		Catalog Numbers Cable Operation		Agency UL
			Min	Max.	Min.	Max.	Release to Close	Pull to Close	
<b>NORMALLY CLOSED (Closed when de-energized)</b>									
1/2	3/4	5.2	32	132	0	5	HV216-585-8	JV216-587-1	○
3/4	3/4	6.5	32	132	0	5	HV216-585-1	JV216-587-2	○
1	1 5/8	24	32	132	0	5	HV216-585-2	JV216-587-3	○
1 1/4	1 5/8	34	32	132	0	5	HV216-585-3	JV216-587-4	○
1 1/2	1 5/8	38	32	132	0	5	HV216-585-4	JV216-587-5	○
2	2 3/32	54	32	132	0	5	HV216-585-5	JV216-587-6	○
2 1/2	3	110	32	132	0	5	HV216-585-6	JV216-587-7	○
3	3	138	32	132	0	5	HV216-585-7	JV216-587-8	○

○ = Safety Shutoff Valve. Safe working pressure 50 psig.

Dimensions: inches

Catalog No.	B	F	G	H	L	P	W
HV216-585-8	1 3/8	3/16	1 9/64	4 3/8	2 3/4	3 13/16	2 29/64
HV216-585-1	1 21/32	3/16	1 9/64	4 13/16	3 5/16	4	2 29/64
HV216-585-2	2 3/8	17/32	2 11/16	7 5/32	5	5 27/32	5 3/8
HV216-585-3	2 3/8	17/32	2 11/16	7 5/32	5	5 27/32	5 3/8
HV216-585-4	2 3/8	17/32	2 11/16	7 5/32	5	5 51/64	5 3/8
HV216-585-5	2 13/16	39/64	3 5/32	7 3/4	6 3/32	6 1/4	6 5/16
HV216-585-6	3 29/32	29/32	4 1/8	9 61/64	7 51/64	7 5/8	7 61/64
HV216-585-7	3 57/64	29/32	4 1/8	9 61/64	7 25/32	7 5/8	7 61/64

**Note:** Max is the full open position. Do not exceed as distortion of internal parts may result.



Catalog No.	B	G	H	L	P	W
JV216-587-1	1 3/8	1 9/64	6 9/16	2 3/4	6	2 23/64
JV216-587-2	1 21/32	1 5/32	7	3 5/16	6 3/16	2 11/32
JV216-587-3	2 3/8	2 11/16	8 13/16	5	7 1/2	5 3/8
JV216-587-4	2 3/8	2 11/16	8 13/16	5	7 1/2	5 3/8
JV216-587-5	2 3/8	2 11/16	8 13/16	5	7 9/16	5 3/8
JV216-587-6	2 13/16	3 5/32	9 17/32	6 3/32	8 1/32	6 5/16
JV216-587-7	3 29/32	4 1/8	11 25/64	7 51/64	9 1/16	7 61/64
JV216-587-8	3 57/64	4 1/8	11 25/64	7 25/32	9 1/16	7 61/64

