



G93 Series BASOTROL® Combination Automatic Gas Valves

The G93 Series BASOTROL® Gas Valve combines the automatic pilot valve, pressure regulator, and automatic main valve functions in one valve. Typical applications include central heating units, unit heaters, commercial clothes dryers, and similar applications.

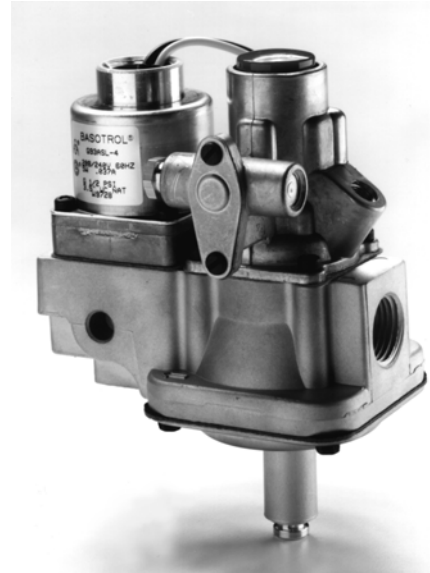


Figure 1: G93 Combination Gas Valve

Features and Benefits		
<input type="checkbox"/>	Bipolar Magnetic Operator Construction	Provides dependable operation and long life
<input type="checkbox"/>	59 kW (200,000 Btu/hr) Regulation Capacity	Standardizes on one valve
<input type="checkbox"/>	Lever-acting or Direct-acting Regulation Adjustment	Provides application flexibility
<input type="checkbox"/>	Compact Design	Permits installation in dimensionally restricted applications
<input type="checkbox"/>	Selectable Pilot Tap Positions	Provides application flexibility
<input type="checkbox"/>	Numerous Magnetic Operator Cover Styles Available	Allows various mounting options and connection choices to best suit your requirements

Product Overview

Application

The G93 valves are suitable for use with natural gas, Liquefied Petroleum (LP) gas, manufactured gas, mixed gas, or LP gas-air mixtures, at pressures up to 35 mbar (0.5 psi) and are suitable for operation over a temperature range of 0 to 68°C (32 to 155°F).

Note: This unit should be used only in applications that are within the limitations and provisions of the applicable American National and/or Underwriters Laboratories® (UL) standards.

Description

The G93 valves are supplied with a standard magnetic operator and are 100% shutoff valves when the pilot is extinguished. Bipolar construction of the operator reduces the possibility of the valve sticking in the open position from residual magnetism or from mechanical interference.

A leak limit orifice is supplied as standard on valves with a regulator stack.

Valve Constructions

The G93 series is available with 1/2 x 1/2 in. body connections with a 25, 120, or 240 VAC 2-wire magnetic operator. Some models are also available with a 208/240 VAC operator. Refer to the *Ordering Information* section for more information.

Additionally, the G93 series is available with other optional configurations.

Pressure Connections

The G93 valve is available with 1/8-27 NPT pressure taps when required (see Figure 4). Contact BASO Gas Products for details and ordering information.

Magnetic Operator Cover Styles

An aluminum magnetic operator cover with conduit hub and 762 mm (30 in.), 18 AWG stranded lead wires are supplied as standard on all line voltage models. The leads and hub position may be located at the top, over the inlet, on the right side, or on the left side of the valve. Lead wires with 6.35 mm (1/4 in.) quick-connect terminals are also available.

The UL Listed steel operator cover is available with a top conduit hub only.

A plastic magnetic operator cover with 6.35 mm (1/4 in.) quick-connect male terminals is supplied as standard on all low-voltage models. However, an aluminum or steel operator cover with conduit hub is available.

Contact BASO Gas Products for details and ordering of magnetic operator cover style and wiring requirements.

Pilot Gas

G93 valves are available with internal pilot gas flow.

Rotor “B” Valve

Figure 2 illustrates a typical installation showing a rotor “B” valve.

A rotor “B” valve (for pilot flame) with pilot flow adjuster is available. Various outlet positions are available.

Contact BASO Gas Products for details and ordering.

Regulator/Pilot Tap Options

The G93 is designed for various configurations. The lever-acting or direct-acting regulator, and right or left-hand pilot tap options take advantage of space or access limitations.

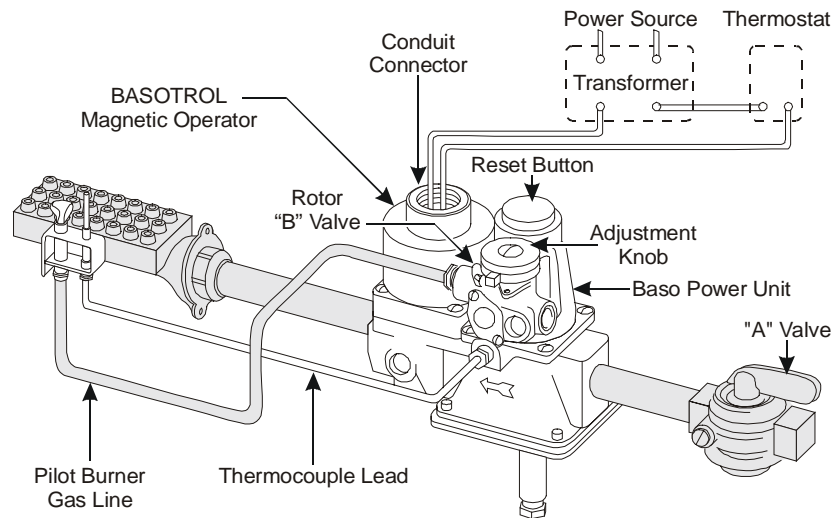


Figure 2: Typical Installation Showing Rotor "B" Valve

Mounting

Series G93 valves may be mounted on a horizontal manifold with the magnetic operator pointed up (vertical) or in a position not exceeding 90° from vertical. The valve may also be mounted on a vertical manifold in any position around its axis. See Figure 3.

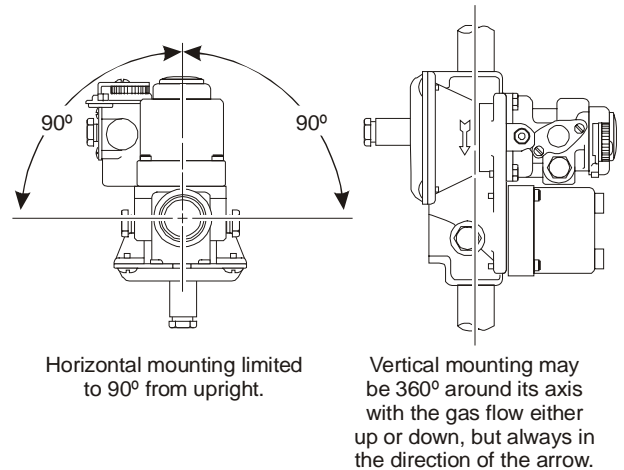


Figure 3: Mounting Positions

Dimensions

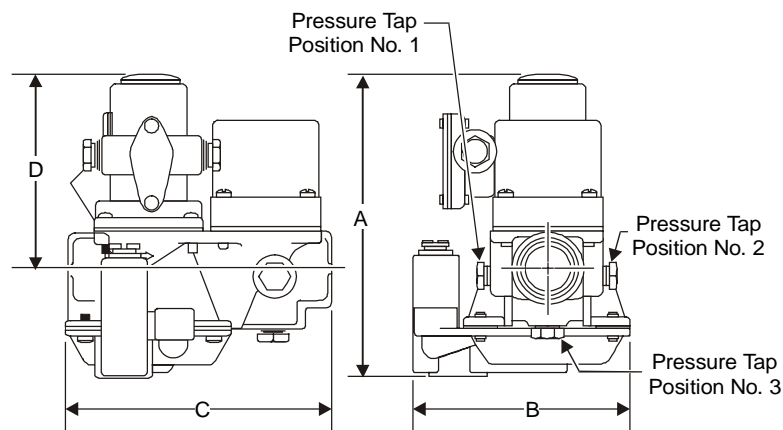


Figure 4: Lever-acting Regulator Model Dimensions Showing Optional Pressure Tap Positions

Table 1: Dimensions

Series Number	A Height		B Width		C Length		D Height	
	mm	in.	mm	in.	mm	in.	mm	in.
Lever-acting G93	123	4.84	87	3.42	107	4.23	81	3.19

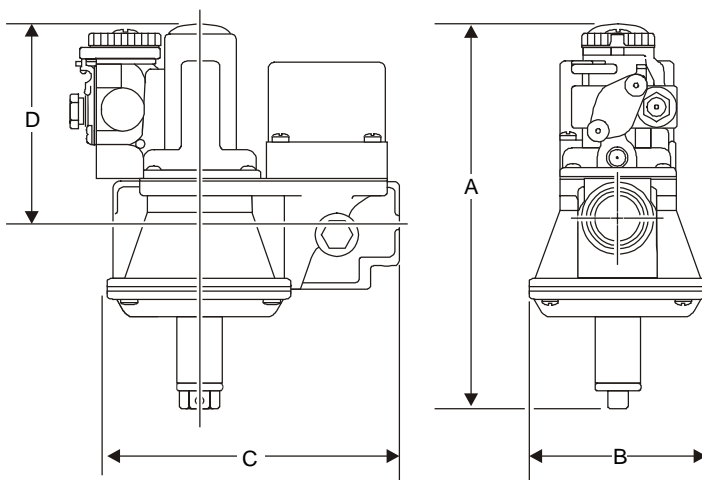


Figure 5: Direct-acting Regulator Model Dimensions

Table 2: Dimensions

Series Number	A Height		B Width		C Length		D Height	
	mm	in.	mm	in.	mm	in.	mm	in.
Direct-acting G93	144	5.66	67	2.66	107	4.23	81	3.19

Range of Regulation

Table 3: Range of Regulation

Model	Q _{MINIMUM}		Q _{MAXIMUM}	
	cf/h	m ³ /h	cf/h	m ³ /h
All G93	20	0.57	200	5.7

Notes: 1 m³/h = 10.67 kW (1 cf/h = 1,000 Btu/hr) natural gas at 0.64 sp gr
For LP flow rate, see Figure 6.

Flow Capacity

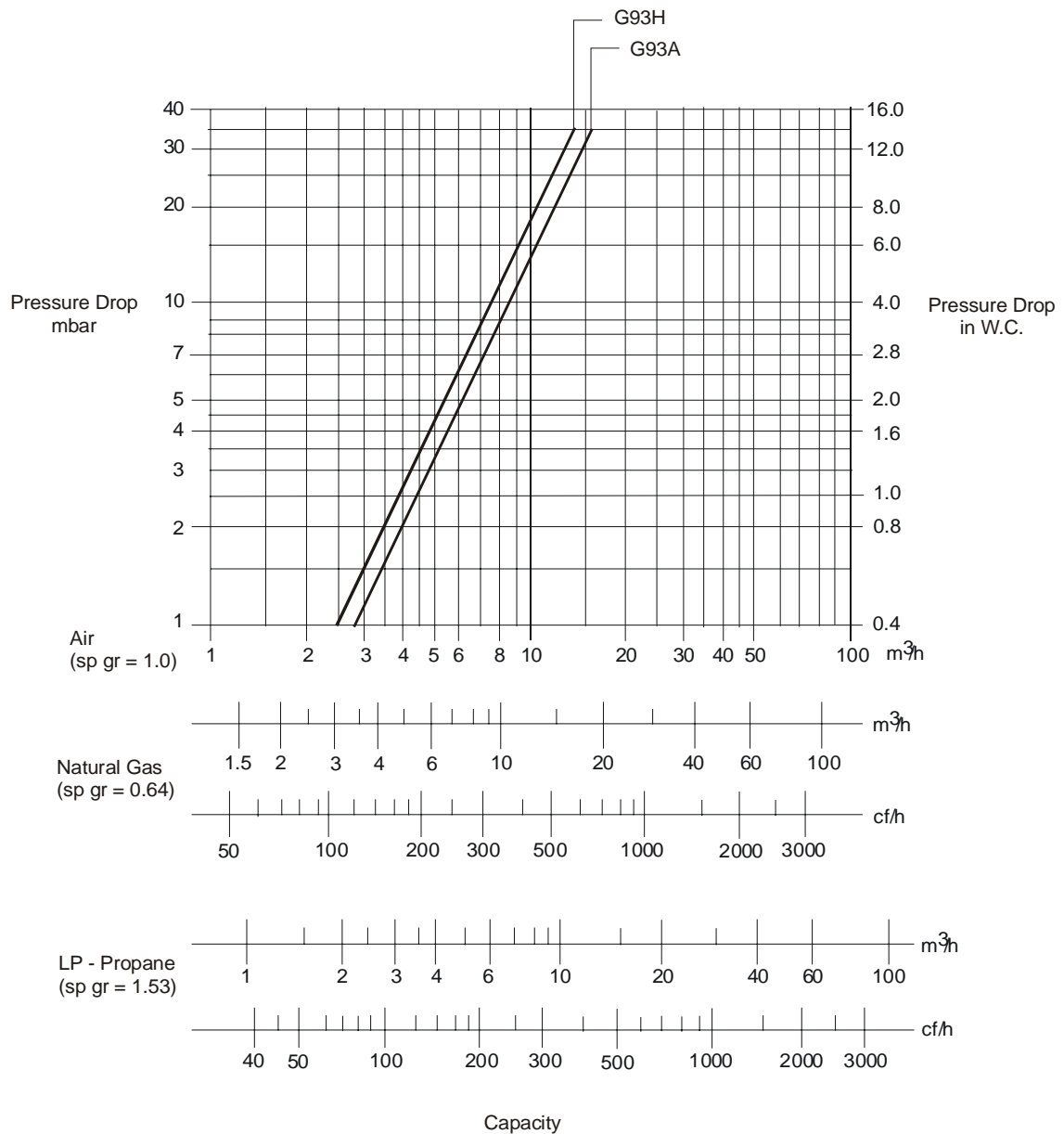
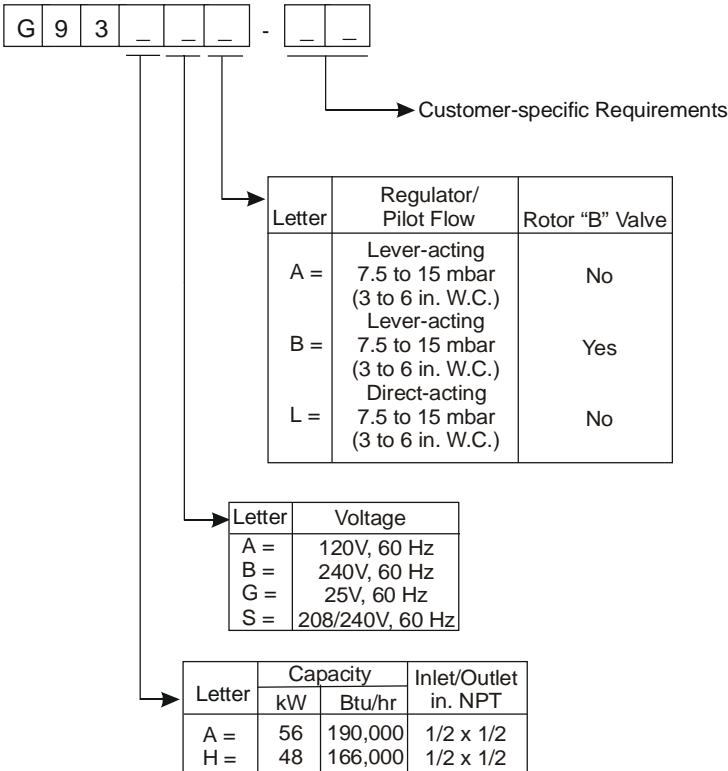


Figure 6: Valve Flow Capacity

Ordering Information



The presence of a particular construction in this information does not guarantee its availability. Consult BASO Gas Products for available constructions.

Figure 7: Ordering Matrix

Notes

Technical Data

Product	G93 Series BASOTROL Combination Automatic Gas Valve			
Maximum Operating Pressure	35 mbar (0.5 psi)			
Valve Body	Aluminum			
Permissible Ambient (Surface) Temperature	CSA:	0 to 68°C (32 to 155°F)		
	UL:	0 to 52°C (32 to 125°F)		
Available Magnetic Operator Cover Styles	Aluminum side conduit hub			
	Aluminum top conduit hub			
	Aluminum top without conduit hub			
	Aluminum side outlet with eyelet			
	Steel top conduit hub			
	Plastic with 6.35 mm (1/4 in.) male quick-connect terminals			
Electrical Rating	25 VAC, 60 Hz, 0.3 ampere draw			
	120 VAC, 60 Hz, 0.05 ampere draw			
	240 VAC, 60 Hz, 0.03 ampere draw			
	208/240 VAC, 60 Hz, 0.037 ampere draw			
Recommended Thermocouple Lead Lengths	K15: 305 to 1,220 mm (12 to 48 in.)			
	K16: 305 to 1,830 mm (12 to 72 in.)			
Wiring Connections	6.35 mm (1/4 in.) male quick-connect terminals, or 762 mm (30 in.) lead wires (other lengths are optional)			
Regulator Adjustment	7.5 to 15 mbar (3 to 6 in. W.C.), lever-acting and direct-acting regulator, natural gas			
	15 to 30 mbar (6 to 12 in. W.C.), lever-acting regulator, LP gas			
	20 to 30 mbar (8 to 12 in. W.C.), direct-acting regulator, LP gas			
Inlet and Outlet Body Connections	1/2 x 1/2 in. NPT			
Types of Gas	Natural, Liquefied Petroleum (LP), manufactured, mixed, or LP gas-air mixtures			
Accessories	Conversion Kits: Natural gas to LP gas:	lever-acting regulator	Y71GF-4	
		direct-acting regulator	Y71GF-3	
	LP gas to natural gas:	lever-acting regulator	Y71QH-2	
		direct-acting regulator	Y71QH-3	
Packaging	Bulk pack supplied to original equipment manufacturer (individual pack optional).			
Bulk Pack Quantity	32			
Bulk Pack Weight	23 kg (51 lb)			
Agency Listing	CSA (AGA/CGA) Certificate Number 176835-1061237			
	UL Recognized File Number MH2926			
Specification Standards	ANSI Z21.78 -1997, CGA 6.20 -M97			
	ANSI Z21.78a-1998, CGA 6.20a-M98			
	UL Standard 372 and 429			

The performance specifications are nominal and conform to acceptable industry standards. For application at conditions beyond these specifications, consult BASO Gas Products. BASO Gas Products shall not be liable for damages resulting from misapplication or misuse of its products.

Refer to the G93 Series Installation Instructions (24-8711-242) for necessary information on the installation, use, and servicing of this product.



BASO Gas Products LLC

1007 South 12th Street
PO Box 170
Watertown, WI 53094
1-877-227-6427 (1-877-BASOGAS)

www.baso.com
Printed in U.S.A.