

V43 Series Repair Parts Kits

The repair parts are supplied in kits only (never separately). Repair kits include all parts required to completely recondition this portion of the valve. If any single part is required, the entire kit in which the part is listed must be ordered. See Page 3 for the itemized parts in the kits and Page 2 for the valve cutaway drawing.

Replacement Kits

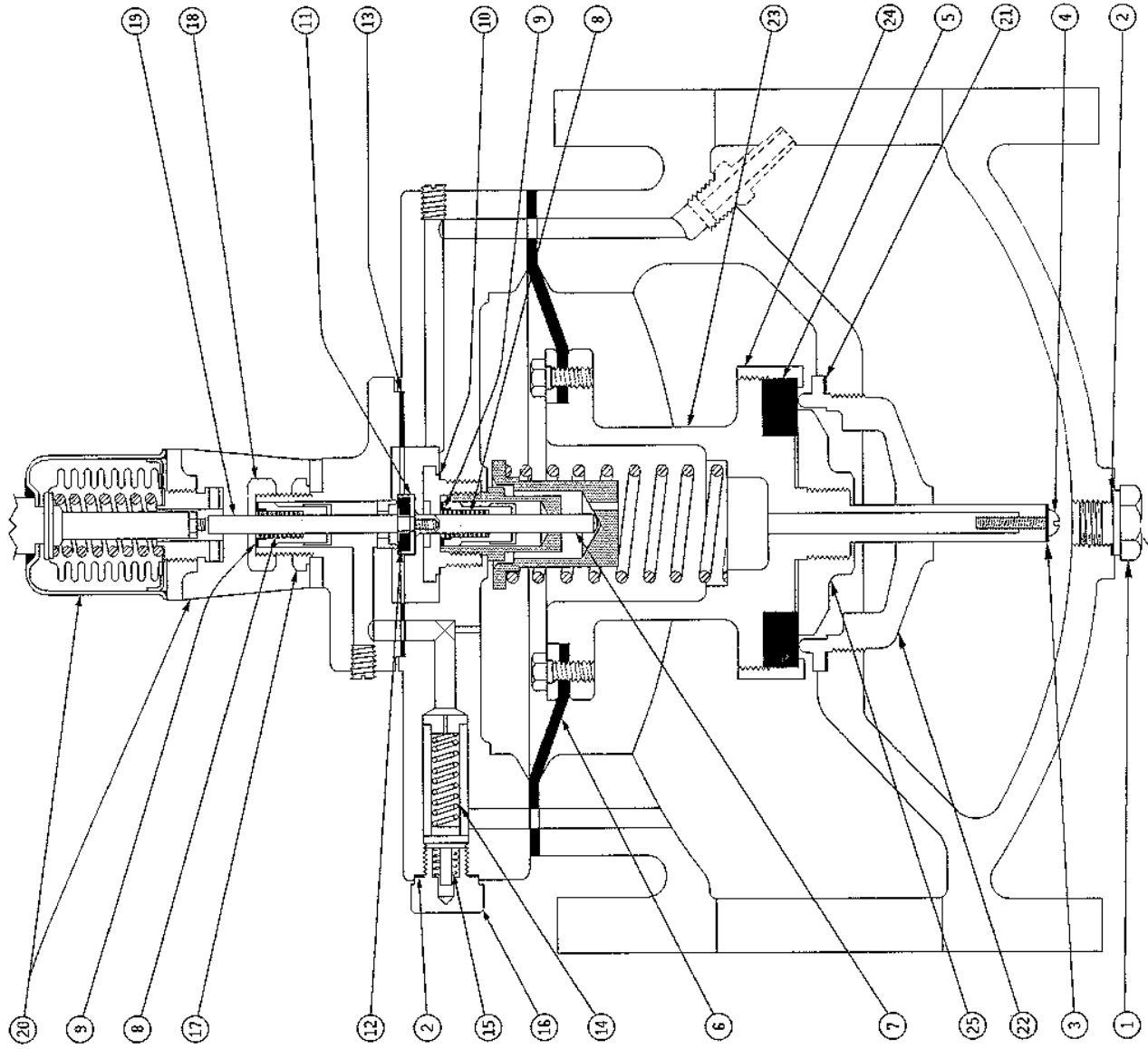
Model	Diaphragm Kit	Seat Disc and Diaphragm Kit	Seat Repair Kit	Screen Repair Kit	Push Rod Kit†	Sensing Element Kit	Disc Body Kit
V43AS-1	DPM18A-600R	DSC16A-600R	STT19A-602R	SCN10A-600R	ROD18A-600R	SEP88A-600R	DBK11A-600R
V43AS-2	DPM18A-600R	DSC16A-600R	STT19A-602R	SCN10A-600R	ROD18A-600R	SEP88A-601R	DBK11A-600R
V43AS-5	DPM18A-600R	DSC16A-600R	STT19A-602R	SCN10A-600R	ROD18A-600R	SEP87A-600R	DBK11A-600R
V43AT-1	DPM18A-601R	DSC16A-601R	STT19A-603R	SCN10A-600R	ROD18A-601R	SEP88A-600R	DBK11A-601R
V43AT-2	DPM18A-601R	DSC16A-601R	STT19A-603R	SCN10A-600R	ROD18A-601R	SEP88A-601R	DBK11A-601R
V43AT-5	DPM18A-601R	DSC16A-601R	STT19A-603R	SCN10A-600R	ROD18A-601R	SEP87A-600R	DBK11A-601R
V43AV-1	DPM18A-602R	DSC16A-602R	STT19A-606R	SCN10A-600R	ROD18A-601R	SEP88A-600R	DBK11A-602R
V43AV-2	DPM18A-602R	DSC16A-602R	STT19A-606R	SCN10A-600R	ROD18A-601R	SEP88A-601R	DBK11A-602R
V43AV-5	DPM18A-602R	DSC16A-602R	STT19A-606R	SCN10A-600R	ROD18A-601R	SEP87A-600R	DBK11A-602R
V43AW-1	DPM18A-603R	DSC16A-603R	STT19A-608R	SCN10A-600R	ROD18A-602R	SEP88A-600R	DBK11A-603R
V43AW-2	DPM18A-603R	DSC16A-603R	STT19A-608R	SCN10A-600R	ROD18A-602R	SEP88A-601R	DBK11A-603R
V43AW-5	DPM18A-603R	DSC16A-603R	STT19A-608R	SCN10A-600R	ROD18A-602R	SEP87A-600R	DBK11A-603R
V43BS-1‡	DPM18A-600R	DSC16A-600R	STT19A-602R	SCN10A-601R	ROD18A-602R	SEP88A-600R	DBK11A-600R
V43BS-2‡	DPM18A-600R	DSC16A-600R	STT19A-602R	SCN10A-601R	ROD18A-602R	SEP88A-601R	DBK11A-600R
V43BS-3	DPM18A-600R	DSC16A-600R	STT19A-600R	SCN10A-601R	ROD18A-602R	SEP88A-600R	DBK10A-600R
V43BS-6	DPM18A-600R	DSC16A-600R	STT19A-600R	SCN10A-601R	ROD18A-602R	SEP88A-600R	DBK10A-600R
V43BS-7	DPM18A-600R	DSC16A-600R	STT19A-600R	SCN10A-601R	ROD18A-602R	SEP88A-601R	DBK10A-600R
V43BT-1‡	DPM18A-601R	DSC16A-601R	STT19A-603R	SCN10A-601R	ROD18A-603R	SEP88A-600R	DBK11A-601R
V43BT-2‡	DPM18A-601R	DSC16A-601R	STT19A-603R	SCN10A-601R	ROD18A-603R	SEP88A-601R	DBK11A-601R
V43BT-3	DPM18A-601R	DSC16A-601R	STT19A-605R	SCN10A-601R	ROD18A-603R	SEP88A-600R	DBK10A-602R
V43BT-6	DPM18A-601R	DSC16A-601R	STT19A-605R	SCN10A-601R	ROD18A-603R	SEP88A-600R	DBK10A-602R
V43BT-7	DPM18A-601R	DSC16A-601R	STT19A-605R	SCN10A-601R	ROD18A-603R	SEP88A-601R	DBK10A-602R
V43BV-1‡	DPM18A-602R	DSC16A-602R	STT19A-606R	SCN10A-601R	ROD18A-603R	SEP88A-600R	DBK11A-602R
V43BV-2‡	DPM18A-602R	DSC16A-602R	STT19A-606R	SCN10A-601R	ROD18A-603R	SEP88A-601R	DBK11A-602R
V43BV-4	DPM18A-602R	DSC16A-602R	STT19A-607R	SCN10A-601R	ROD18A-603R	SEP88A-600R	DBK10A-601R
V43BV-5‡	DPM18A-602R	DSC16A-602R	STT19A-606R	SCN10A-601R	ROD18A-603R	SEP88A-600R	DBK11A-602R
V43BV-6‡	DPM18A-602R	DSC16A-602R	STT19A-606R	SCN10A-601R	ROD18A-603R	SEP88A-601R	DBK11A-602R
V43BV-7	DPM18A-602R	DSC16A-602R	STT19A-607R	SCN10A-601R	ROD18A-603R	SEP88A-601R	DBK10A-601R
V43BV-8	DPM18A-602R	DSC16A-602R	STT19A-607R	SCN10A-601R	ROD18A-603R	SEP88A-600R	DBK10A-601R
V43BV-9	DPM18A-602R	DSC16A-602R	STT19A-607R	SCN10A-601R	ROD18A-603R	SEP88A-601R	DBK10A-601R
V43BV-10	DPM18A-602R	DSC16A-602R	STT19A-607R	SCN10A-601R	ROD18A-603R	SEP88A-600R	DBK10A-601R
V43BW-1	DPM18A-603R	DSC16A-603R	STT19A-609R	SCN10A-601R	ROD18A-602R	SEP88A-600R	DBK10A-603R
V43BW-2	DPM18A-603R	DSC16A-603R	STT19A-609R	SCN10A-601R	ROD18A-602R	SEP88A-601R	DBK10A-603R
V43BW-5	DPM18A-603R	DSC16A-603R	STT19A-609R	SCN10A-601R	ROD18A-602R	SEP88A-600R	DBK10A-603R
V43BW-6	DPM18A-603R	DSC16A-603R	STT19A-609R	SCN10A-601R	ROD18A-602R	SEP88A-601R	DBK10A-603R
V43BW-7	DPM18A-603R	DSC16A-603R	STT19A-609R	SCN10A-601R	ROD18A-602R	SEP88A-600R	DBK10A-603R
V43CS-1	DPM18A-600R	DSC16A-600R	STT19A-600R	SCN10A-601R	ROD18A-602R	SEP88A-600R	DBK10A-600R
V43CS-2	DPM18A-600R	DSC16A-600R	STT19A-600R	SCN10A-601R	ROD18A-602R	SEP88A-600R	DBK10A-600R
V43CS-3	DPM18A-600R	DSC16A-600R	STT19A-600R	SCN10A-601R	ROD18A-604R	SEP88A-600R	DBK10A-600R
V43CT-1	DPM18A-601R	DSC16A-601R	STT19A-605R	SCN10A-601R	ROD18A-603R	SEP88A-600R	DBK10A-602R
V43CT-2	DPM18A-601R	DSC16A-601R	STT19A-605R	SCN10A-601R	ROD18A-603R	SEP86A-600R	DBK10A-602R
V43CV-1	DPM18A-602R	DSC16A-602R	STT19A-607R	SCN10A-601R	ROD18A-603R	SEP86A-600R	DBK10A-601R
V43CV-2	DPM18A-602R	DSC16A-602R	STT19A-607R	SCN10A-601R	ROD18A-603R	SEP88A-600R	DBK10A-601R

† Replacement push rod kit requires a diaphragm kit when replaced.

‡ The following valves, manufactured after date code 8702, contain monel interior trim. When replacing the interior trim parts, i.e. seat, disc retainer, etc., it is not advisable to intermix brass and monel parts. Replacement Parts Kits should be ordered as listed:

Valve Model	Order Parts Kits for:	Valve Model	Order Parts Kits for:	Valve Model	Order Parts Kits for:	Valve Model	Order Parts Kits for:
V43BS-1	V43BS-6	V43BT-1	V43BT-6	V43BV-1	V43BV-10	V43BV-5	V43BV-10
V43BS-2	V43BS-7	V43BT-2	V43BT-7	V43BV-2	V43BV-7	V43BV-6	V43BV-9

Valve Cutaway With Guide Numbers



Repair Parts Kits With Components Itemized

DRAWING GUIDE NUMBERS	INDIVIDUAL PART DESCRIPTION (COMPLETE KIT MUST BE ORDERED THAT CONTAINS PART REQUIRED)	DIAPHRAGM KIT	PUSH ROD KIT†	SCREEN KIT (ALL SIZES)	SEP86A-600R (R122) SWEAT CONN.	SEP82A-600R (R122) 1/4" FNPT (AMMONIA)	SEP88A-600R (R12) 1/4" MALE FLARE	SEP88A-601R (R22) 1/4" MALE FLARE	SEAT KITS, BRASS	SEAT KITS, MONEL	DISC BODY KITS, BRASS	DISC BODY KITS, MONEL	SEAT DISC AND DIAPHRAGM KITS
		DPM18A-600R DPM18A-601R DPM18A-602R DPM18A-603R	R0018A-600R R0018A-601R R0018A-602R R0018A-603R R0018A-604R	SCN10A-600R COMMERCIAL SCN10A-601R NAVY, MARTIME	SEP86A-600R (R122) SWEAT CONN.	SEP82A-600R (R122) 1/4" FNPT (AMMONIA)	SEP88A-600R (R12) 1/4" MALE FLARE	SEP88A-601R (R22) 1/4" MALE FLARE	ST119A-602R ST119A-603R ST119A-606R ST119A-608R ST119A-609R	ST119A-602R ST119A-605R ST119A-609R	DBK11A-600R DBK11A-601R DBK11A-602R DBK11A-603R	DBK10A-600R DBK10A-601R DBK10A-602R DBK10A-603R	OSCL16A-600R OSCL16A-601R OSCL16A-602R OSCL16A-603R
1	Drain Plug	X											
2	Plug Gasket	X		X									
3	Drain Screw Gasket	X		X									
4	Drain Screw	X		X									
5	Valve Seat Disc	X		X									
6	Diaphragm	X											
7	Main Valve Push Rod Assembly		X										
8	Compression Spring 2 with Push Rod Kit 1 with Element Kit		X		X			X					
9	Seal Eyelet (2 Rq'd)		X		X		X	X					
10	Cap Gasket		X										
11	Pilot Valve Disc Retainer		X										
12	Pilot Valve Seat Disc		X										
13	Cap Flange Gasket		X										
14	Bypass Screen Assembly			X									
15	Bypass Compression Spring			X									
16	Bypass Screen Plug			X									
17	Lock Nut		X		X								
18	Seal Nut		X		X			X					
19	Pilot Push Rod Assembly		X		X			X					
20	Sensing Element and Mounting Yoke Assembly				X			X					
21	Seat Gasket								X	X			
22	Seat Casting								X	X			
23	Disc Body Casting								X	X			
24	Disc Retainer								X	X			
25	Disc Nut Casting								X	X			

†Also requires a diaphragm kit when replaced.

*Not required on 2" and 2 1/2" valves.

Notes



Controls Group
507 E. Michigan Street
P.O. Box 423
Milwaukee, WI 53202

Printed in U.S.A.