

P-5500 Pneumatic Pressure Indicator

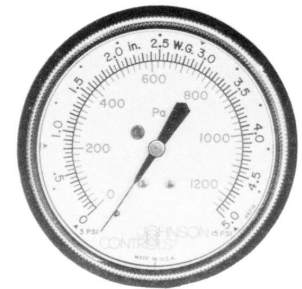
The P-5500 Pneumatic Pressure Indicator provides continuous visual indication of constant, static or differential pressure measured by a transmitter with a 3 to 15 PSIG (21 to 105 kPa) output range. The gage features a 3-1/2 in. (89 mm) dial size in standard and metric ranges listed in the Specifications table with an accuracy of $\pm 1/2\%$ of full range.

The dull black lacquer finish and black printing contrast with the white dial face for easy readability and attractive appearance. The equivalent metric scale is printed in blue. The clear plastic protective lens screws off for cleaning and easy access to the recalibration screw on the dial face.

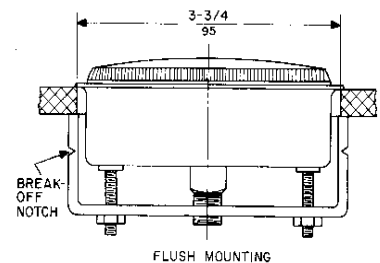
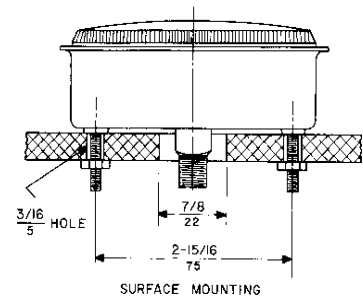
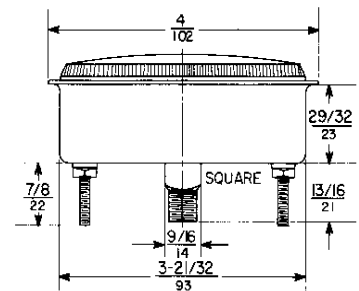
Mounting

The P-5500 indicators can be flush or surface mounted. For flush mounting, "U" clamps are furnished with break-off notches to accommodate panel thicknesses from 1/16 to 3/4 in. (2 to 13 mm).

Application and Drawing Identification



**P-5500
Pneumatic Pressure
Indicator**



Dimensions $\frac{\text{in.}}{\text{mm}}$

Specifications

Product	P-5500 Pneumatic Pressure Indicator
P-5500-1046	0 to 15 PSIG/0 to 103.4 kPa
P-5500-1006	0 to 50 PSIG/0 to 345 kPa
P-5500-1007	0 to 100 PSIG/0 to 690 kPa
P-5500-1008	0 to 200 PSIG/0 to 1379 kPa
P-5500-1005	-30 in. HG to 30 PSIG/-101 to 207 kPa
Models	
P-5500-43	-.05 to +.05 in. WG/-12.5 to +12.5 Pa
P-5500-1039	0 to 0.1 in. WG/0 to 24.9 Pa
P-5500-1040	0 to .25 in. WG/0 to 62.25 Pa
P-5500-1019	0 to 0.5 in. WG/0 to 124.5 Pa
P-5500-44	0 to 1.0 in. WG/0 to 249 Pa
P-5500-1018	0 to 2.0 in. WG/0 to 498 Pa
P-5500-1022	0 to 5.0 in. WG/0 to 1245 Pa
P-5500-1024	0 to 10.0 in. WG/0 to 2490 Pa
Accuracy	$\pm 1/2\%$ of Full Range per ANSI Spec. B40.1M
Pressure Range	3 to 15 PSIG (21 to 105 kPa)
Ambient Temp. Limits	-20 to 150F (-29 to 66°C)
Air Connection	1/8 in. N.P.T.
Mounting	Flush or Surface

The performance specifications are nominal and conform to acceptable industry standards. For application at conditions beyond these specifications, consult the local Johnson Controls office. Johnson Controls, Inc. shall not be liable for damages resulting from misapplication or misuse of its products.

Notes



Controls Group
507 E. Michigan Street
P.O. Box 423
Milwaukee, WI 53202

Printed in U.S.A.