



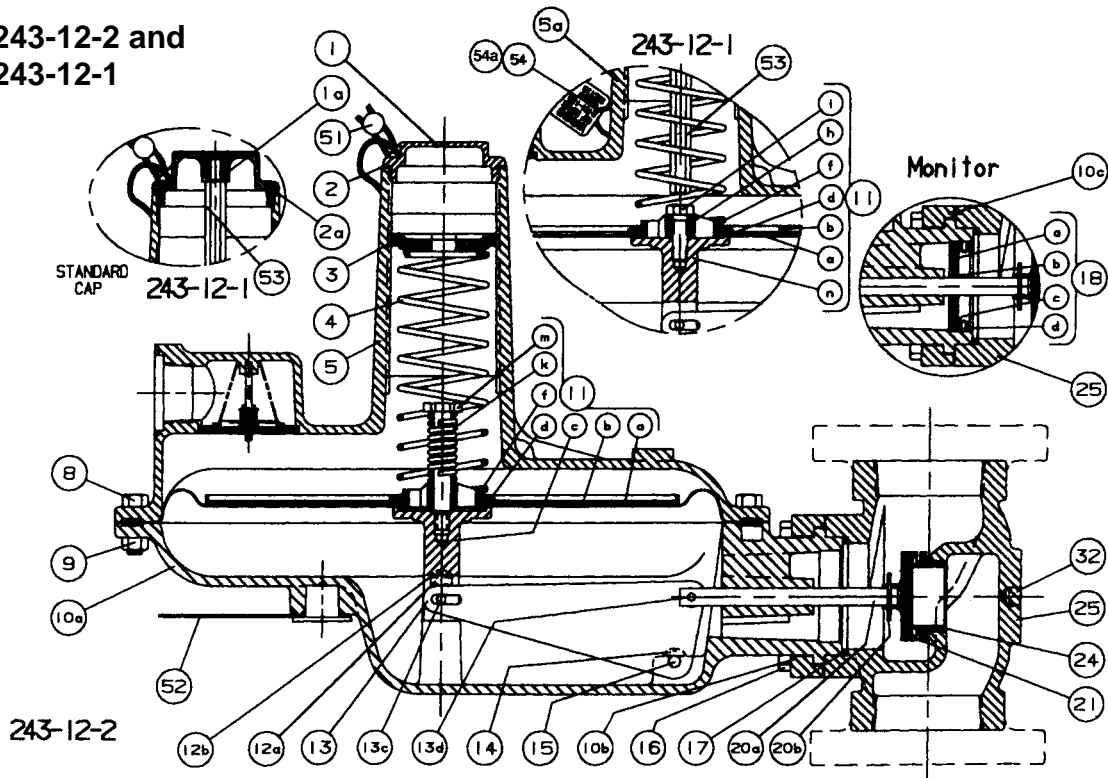
Energy Metering

Invensys Energy Metering
80 Liberty Boulevard
DuBois, PA 15801
Telephone (814) 371-8000
FAX (814) 375-8460

Parts List 243 Service Regulators

Parts List 243 Service Regulators

Models 243-12-2 and 243-12-1



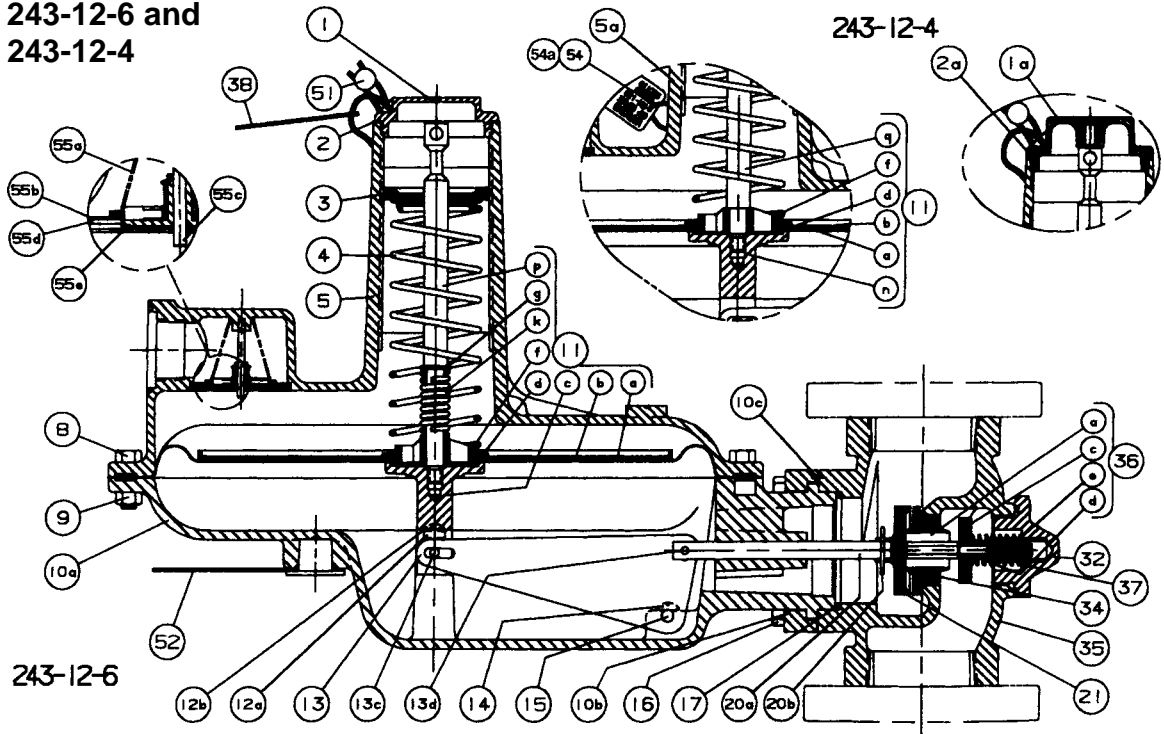
ILL. NO.	DESCRIPTION	PART NUMBER
1	Seal Cap (IRV)	143-16-005-00
1a	Seal Cap (Std)	143-16-005-08
2	O-Ring #2-140	951357
2a	O-Ring #2-142	951367
3	Adjustment Spring Button	143-16-009-00
4	Spring, 3-1/2" to 6-1/2" w.c., Red	143-16-021-03
	Spring, 5" to 8-1/2" w.c., Blue	143-16-021-04
	Spring, 6" to 14" w.c., Green	143-16-021-05
	Spring, 10" to 18" w.c., Orange-Black	143-16-021-11
	Spring, 12" to 28" w.c., Orange	143-16-021-06
	Spring, 1 to 2 psi, Black	143-16-021-07
	Spring, 1-1/2 to 3 psi, Cadmium	143-16-021-08
5	Upper Diaphragm Case Assembly (IRV)	143-16-503-03
5a	Upper Diaphragm Case Assembly (Std)	143-16-503-19
8	Screw, 5/16"-18 x 1" Hex Hd. Stl.	910030
9	Nut, 5/16"-18 Hex Hd. Stl.	920052
10	Lower Diaphragm Case Assembly	
	10a Lower Diaphragm Case, Std.	143-16-002-00
	Lower Diaphragm Case, Monitor	143-16-002-01
	10b Clamping Plate	143-16-102-00
	10c Roll Pin, 1/8" x 5/8"	904103
11a	Diaphragm	143-16-150-00
11b	Diaphragm (Viton)	143-16-150-02
11c	Diaphragm Pan	143-16-017-00
11d	Diaphragm Coupling (IRV)	143-16-028-00
11e	Seal Washer	143-16-115-00
11f	Spring Guide	143-16-018-00
11h	Diaphragm Spacer	143-16-079-00
11k	Spring - IRV, 9" Release	143-16-021-02
11l	Screw, 5/16"-18 x 1" Hex Hd. Stl.	910030
11m	Relief Valve Guide	143-16-153-00
11n	Diaphragm Coupling (Std.)	143-16-028-01
12a	Diaphragm Coupling Stop	143-16-040-00
12b	Screw, 3/8" Rd. Hd. Self Tap	903160
13	Lever 1/4	143-16-030-00
13c	Roll Pin - Lever Weight	901699
13d	Roll Pin - Valve Stem	904104
14	Screw, 1/4" x 5/8" Rd. Hd. Self Tap	950353
15	Fulcrum Pin	143-16-032-00
16	Cap Screw, 3/8"-16 x 1-1/4" Hex Hd. Stl.	910056
17	Tetraseal, Lower Case to Body	904075
18	Seal Disc Assembly - Monitor	143-16-508-00
	18a Seal Disc, CRS cad. plated	143-16-008-00
	18b Inner O-Ring	934007
	18c Outer O-ring	905809
	18d Set Screw, #6, 32 x 1/4" Hex Soc. Cup Pt.	903197

ILL. NO.	DESCRIPTION	PART NUMBER
18	Seal Disc Assembly - Monitor for Corrosive Service	143-16-508-01
	18a Seal Disc, CRS cad. plated	143-16-008-00
	18b Inner O-ring, Viton	902418
	18c Outer O-ring, Viton	904842
	18d Set Screw, #6, 32 x 1/4" Hex Soc. Cut Pt.	903197
20a	Stem	143-16-016-00
	Stem, for Corrosive Service	143-16-016-01
20b	Hair Pin Cotter	143-62-118-00
21	Valve, 10°, Buna-N	143-16-511-09
	Valve, 30°, Buna-N	143-16-511-10
	Valve, 10°, Viton	143-16-511-11
	Valve, 30°, Viton	143-16-511-12
24	Orifice, 1/4"	143-16-023-10
	Orifice, 3/8"	143-16-023-04
	Orifice, 1/2"	143-16-023-00
	Orifice, 3/4"	143-16-023-01
	Orifice, 1"	143-16-023-02
	Orifice, 1-1/4"	143-16-023-03
	Orifice, 1/4", Stainless Steel	143-16-023-15
	Orifice, 3/8", Stainless Steel	143-16-023-16
	Orifice, 1/2", Stainless Steel	143-16-023-17
	Orifice, 3/4", Stainless Steel	143-16-023-12
	Orifice, 1", Stainless Steel	143-16-023-13
	Orifice, 1-1/4", Stainless Steel	143-16-023-14
25	Body, 1-1/2" NPT - Std.	143-14-001-00
	Body, 1-1/2" NPT - 1/4" Inlet Tap	143-14-001-02
	Body, 2" NPT - Std.	143-16-001-00
	Body, 2" NPT - 1/4" Inlet Tap	143-16-001-04
	Body, 2" Flanged - Std.	143-16-001-03
	Body, 2" Flanged - 1/4" Inlet Tap	143-16-001-05
32	1/4" Soc. Hd. Stl. Pipe Plug	904364
51	Seal and Wire	001-61-057-07
52	Instruction Tag (Monitor)	138-18-136-00
53	Travel Stop Stem	143-16-060-02
54	Warning Tag - Travel Stop	143-16-136-05
54a	Warning Tag - Body Interchangeability	143-16-136-06
55a	* Exhaust Spring	143-16-021-00
55b	* Valve Seal (Washer)	143-16-024-00
55c	* Stem Guide	143-16-012-00
55d	* Retaining Ring	904013
55e	* Valve Assembly	143-16-526-01

* See page 3 for item illustration

NOTE: The term Standard refers to non-IRV configurations.

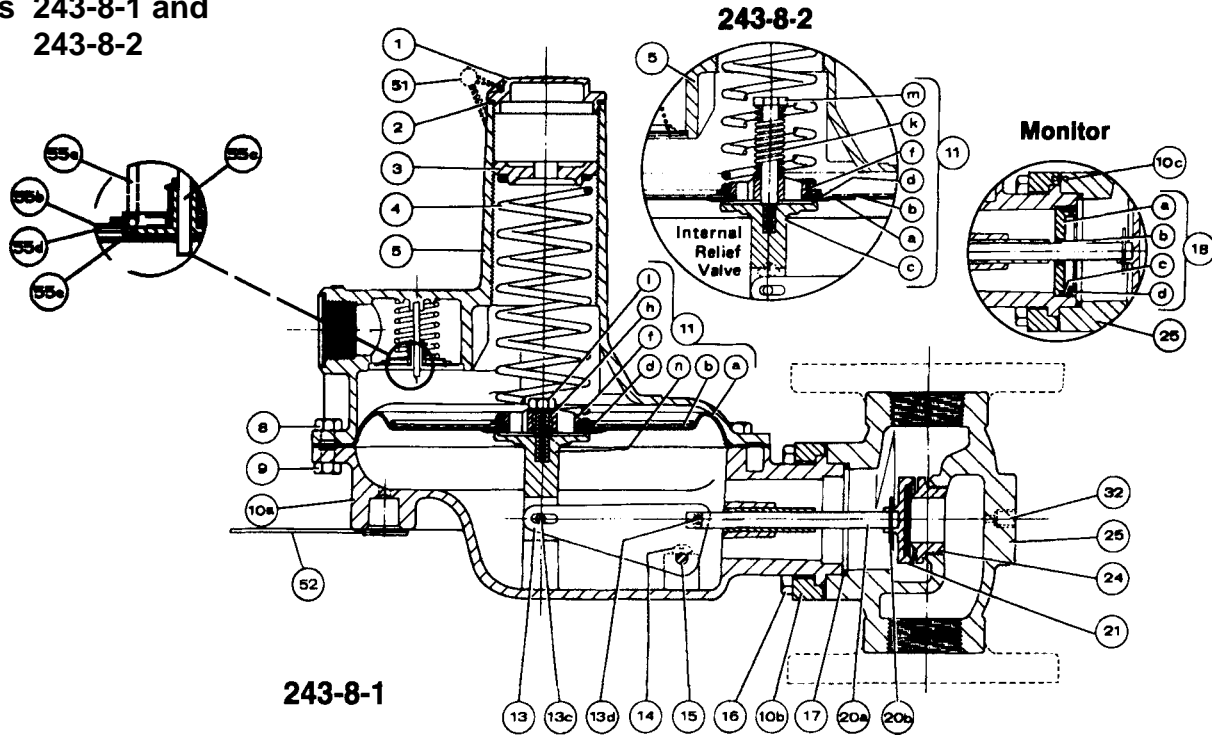
Models 243-12-6 and 243-12-4



ILL. NO.	DESCRIPTION	PART NUMBER
1	Seal Cap (IRV)	143-16-005-00
1a	Seal Cap (Std.)	143-16-005-08
2	O-Ring #2-140	951357
2a	O-Ring #2-142	951367
3	Adjustment Spring Button	143-16-009-00
4	Spring, 3-1/2" to 6-1/2" w.c., Red	143-16-021-03
	Spring, 5" to 8-1/2" w.c., Blue	143-16-021-04
	Spring, 6" to 14" w.c., Green	143-16-021-05
	Spring, 12" to 28" w.c., Orange	143-16-021-06
5	Upper Diaphragm Case Assembly (IRV)	143-16-503-03
5a	Upper Diaphragm Case Assembly (Std.)	143-16-503-19
8	Screw, 5/16"-18 x 1" Hex Hd. Stl.	910030
9	Nut, 5/16"-18 Hex Hd. Stl.	920052
10	Lower Diaphragm Case Assembly	
	10a Lower Diaphragm Case, Std.	143-16-002-00
	10b Lower Diaphragm Case, Monitor	143-16-002-01
	10c Clamping Plate	143-16-102-00
	10d Roll Pin, 1/8" x 5/8"	904103
11a	Diaphragm	143-16-150-00
	Diaphragm (Viton)	143-16-150-02
11b	Diaphragm Pan	143-16-017-00
11c	Diaphragm Coupling (IRV)	143-16-028-00
11d	Seal Washer	143-16-115-00
11f	Spring Guide	143-16-018-00
11g	Washer	1190408
11k	Spring - IRV, 9" Release	143-16-021-02
11n	Diaphragm Coupling (Std.)	143-16-028-01
11p	Diaphragm Stem (IRV)	143-16-058-00
11q	Diaphragm Stem (Std.)	143-16-058-01
12a	Diaphragm Coupling Stop	143-16-040-00
12b	Screw, 1/4-14 x 3/8" Hex Washer Hd.	951040
13	Lever 1/4	143-16-030-00
13c	Roll Pin - Lever Weight	901699
13d	Roll Pin - Valve Stem	904104
14	Screw, 1/4" x 5/8" Rd. Hd. Self Tap	950353
15	Fulcrum Pin	143-16-032-00
16	Cap Screw, 3/8"-16 x 1-1/4" Hex Hd. Stl.	910056
17	Tetraseal, Lower Case to Body	904075

ILL. NO.	DESCRIPTION	PART NUMBER
20a	Stem	143-16-016-00
	Stem, for Corrosive Service	143-16-016-01
20b	Hair Pin Cotter	143-62-118-00
21	Valve, 10°, Buna-N	143-16-511-09
	Valve, 30°, Buna-N	143-16-511-10
	Valve, 10°, Viton	143-16-511-11
	Valve, 30°, Viton	143-16-511-12
32	Cut-off Body Cap Assembly	143-16-304-00
	Cut-off Body Cap Assembly, for Corrosive Service	143-16-304-01
34	Orifice, 1/2"	143-16-023-05
	Orifice, 3/4"	143-16-023-06
	Orifice, 1"	143-16-023-07
	Orifice, 1/2", Stainless Steel	143-16-023-19
	Orifice, 3/4", Stainless Steel	143-16-023-20
	Orifice, 1", Stainless Steel	143-16-023-21
35	Body, 1-1/2" NPT-LPCO	143-14-001-01
	Body, 2" NPT-LPCO	143-16-001-02
	Body, 2" Flanged, LPCO	143-16-001-06
36	Cut-off Valve and Stem Assembly	143-16-516-00
	36a Cut-off Stem	143-16-116-00
	36c Cut-off Valve	143-16-311-00
	36d Cut-off Valve Gasket	143-16-047-00
	36e Cut-off Valve Guide	143-16-012-01
37	Cut-off Valve Spring	143-16-021-09
38	Instruction Tag	143-16-136-03
51	Seal and Wire	001-61-057-07
52	Instruction Tag (Monitor)	138-18-136-00
54	Warning Tag	143-16-136-05
54a	Warning Tag - Body Interchangeability	143-16-136-06
55a	Exhaust Spring	143-16-021-00
55b	Valve Seat (Washer)	143-16-024-00
55c	Stem Guide	143-16-012-00
55d	Retaining Ring	904013
55e	Valve Assembly	143-16-526-01

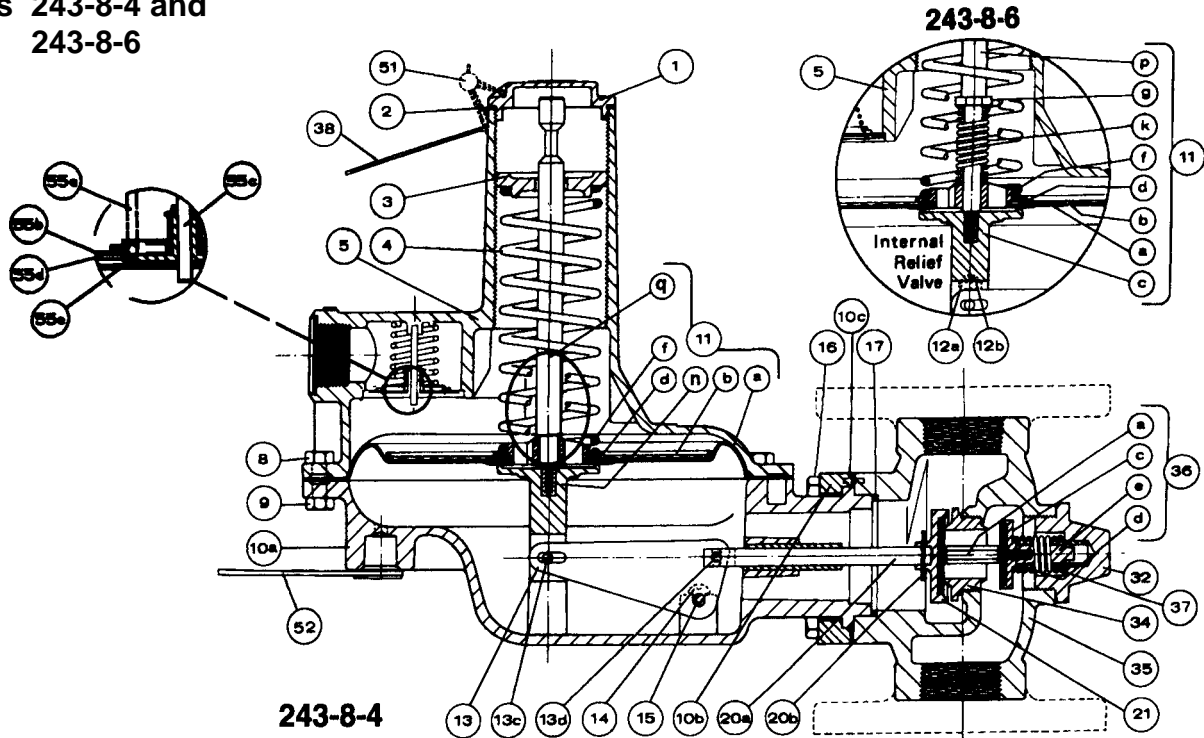
Models 243-8-1 and 243-8-2



ILL. NO.	DESCRIPTION	PART NUMBER
1	Seal Cap	143-16-005-00
2	Tetraseal - Seal Cap, 2-1/4" x 2-3/8"	905241
3	Adjustment Spring Button	143-16-009-00
4	Spring, 3-1/2" to 6-1/2" w.c., Red-Black	143-82-021-00
	Spring, 5" to 8-1/2" w.c., Blue-Black	143-82-021-01
	Spring, 6" to 14" w.c., Green-Black	143-82-021-02
	Spring, 12" to 28" w.c., Green	143-16-021-05
	Spring, 1 to 2 psi, Orange	143-16-021-06
	Spring, 2 to 4-1/4 psi, Black	143-16-021-07
	Spring, 3 to 6-1/2 psi, Cadmium	143-16-021-08
5	Upper Diaphragm Case Assembly	143-82-503-04
8	Screw, 5/16"-18 x 1" Hex Hd. Stl.	910030
9	Nut, 5/16"-18 Hex Hd. Stl.	920052
10	Lower Diaphragm Case Assembly	
	10a Lower Diaphragm Case, Std.	143-82-002-00
	Lower Diaphragm Case, Monitor	143-82-002-01
	10b Clamping Plate	143-16-102-00
	10c Roll Pin, 1/8" x 5/8"	904103
11a	Diaphragm	143-82-150-00
	Diaphragm (Viton)	143-82-150-01
11b	Diaphragm Pan	143-82-017-00
11c	Diaphragm Coupling (IRV)	143-16-028-00
11d	Seal Washer	143-16-115-00
11f	Spring Guide	143-16-018-00
11g	Washer	1190408
11k	Spring - IRV, 9" Release	143-82-021-03
	Spring- IRV, 20" Release	143-16-021-02
11n	Diaphragm Coupling (Std.)	143-16-028-01
11p	Diaphragm Stem	143-16-058-00
11q	Diaphragm Stem (Std.)	143-16-058-01
12a	Diaphragm Coupling Stop	143-16-040-00
12b	Screw, 1/4"-14 x 3/8" Hex Washer Hd.	950140
13	Lever	143-82-030-00
13c	Roll Pin - Lever Weight, 3/16" Dia. x 1-1/8" lg.	901699
13d	Roll Pin - Valve Stem, 5/32" Dia. x 7/16" lg.	904104
14	Screw, 1/4" x 5/8" Rd. Hd. Self Tap	950353
15	Fulcrum Pin	143-16-032-00
16	Cap Screw, 3/8"-16 x 1-1/4" Hex Hd. Stl.	910056
17	Tetraseal, Lower Case to Body	904075

ILL. NO.	DESCRIPTION	PART NUMBER
18	Seal Disc Assembly - Monitor	143-16-508-00
	18a Seal Disc, CRS cad. plated	143-16-008-00
	18b Inner O-Ring	934007
	18c Outer O-Ring	905809
	18d Set Screw, #6-32 x 1/4" Hex Soc. Cup Pt.	903197
	Seal Disc Assembly - Monitor for Corrosive Service	143-16-508-01
	18a Seal Disc, CRS cad. plated	143-16-008-00
	18b Inner O-ring, Viton	902418
	18c Outer O-ring, Viton	904842
	18d Set Screw, #6-32 x 1/4" Hex. Soc. Cup Pt.	903197
20a	Stem	143-16-016-00
	Stem, for Corrosive Service	143-16-016-01
20b	Hair Pin Cotter	143-62-118-00
21	Valve, 10°, Buna-N	143-16-511-09
	Valve, 30°, Buna-N	143-16-511-10
	Valve, 10°, Viton	143-16-511-11
	Valve, 30°, Viton	143-16-511-12
24	Orifice, 1/4"	143-16-023-10
	Orifice, 3/8"	143-16-023-04
	Orifice, 1/2"	143-16-023-00
	Orifice, 3/4"	143-16-023-01
	Orifice, 1"	143-16-023-02
	Orifice, 1/4", Stainless Steel	143-16-023-15
	Orifice, 3/8", Stainless Steel	143-16-023-16
	Orifice, 1/2", Stainless Steel	143-16-023-17
	Orifice, 3/4", Stainless Steel	143-16-023-12
	Orifice, 1", Stainless Steel	143-16-023-13
25	Body, 1-1/4" NPT - Std.	143-12-001-00
	Body, 1-1/4" NPT - 1/4" Inlet Tap	143-12-001-02
	Body, 1-1/2" NPT - Std.	143-14-001-00
	Body, 1-1/2" NPT - 1/4" Inlet Tap	143-14-001-02
	Body, 2" NPT - Std.	143-16-001-00
	Body, 2" NPT, 1/4" Inlet Tap	143-16-001-04
	Body, 2" Flanged, Std.	143-16-001-03
	Body, 2" Flanged, 1/4" Inlet Tap	143-16-001-05
	1/4" Soc. Hd. Stl. Pipe Plug	904364
51	Seal and Wire	001-61-057-07
52	Instruction Tag (Monitor)	138-18-136-00
55a	Exhaust Spring	086-10-021-02
55b	Valve Seat (Washer)	143-16-024-00
55c	Stem Guide	143-16-012-00
55d	Retaining Ring	904013
55e	Valve Assembly	143-16-526-01

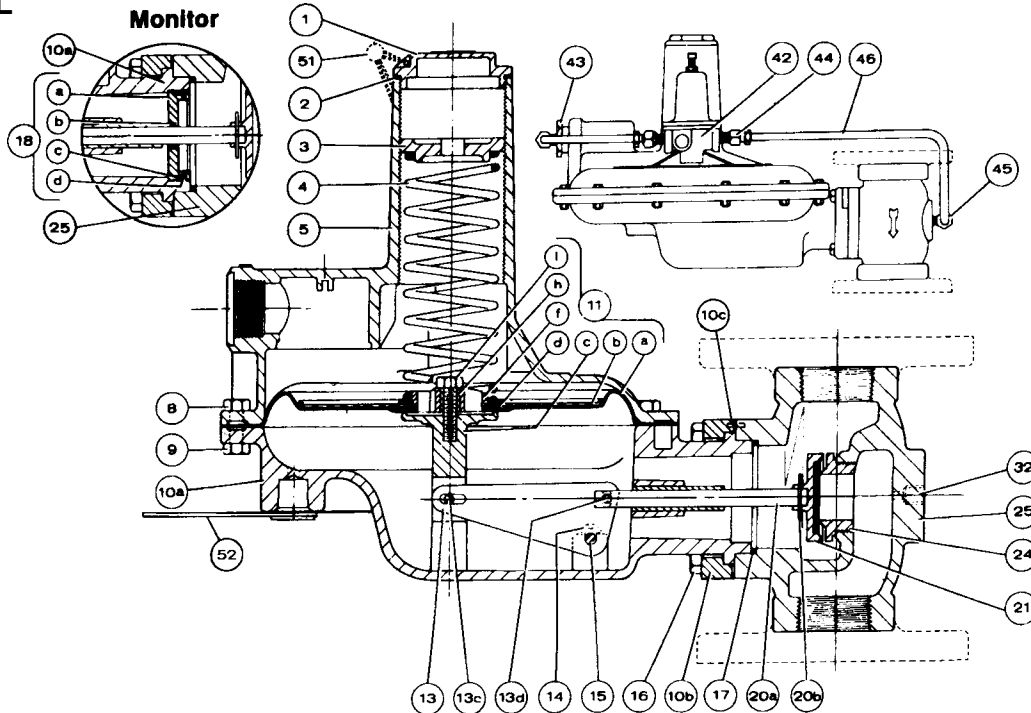
Models 243-8-4 and 243-8-6



ILL. NO.	DESCRIPTION	PART NUMBER
1	Seal Cap	143-16-005-08
2	Tetraseal - Seal Cap, 2-1/4" x 2-3/8"	905241
3	Adjustment Spring Button	143-16-009-00
4	Spring, 3-1/2" to 6-1/2" w.c., Red-Black	143-82-021-00
	Spring, 5" to 8-1/2" w.c., Blue-Black	143-82-021-01
	Spring, 6" to 14" w.c., Green-Black	143-82-021-02
	Spring, 12" to 28" w.c., Green	143-16-021-05
	Spring, 1 to 2 psi, Orange	143-16-021-06
	Spring, 2 to 4-1/2 psi, Black	143-16-021-07
	Spring, 3 to 6-1/2 psi, Cadmium	143-16-021-08
5	Upper Diaphragm Case Assembly	143-82-503-04
8	Screw, 5/16"-18 x 1" Hex Hd. Stl.	910030
9	Nut, 5/16"-18 Hex Hd. Stl.	920052
10	Lower Diaphragm Case Assembly	
10a	Lower Diaphragm Case, Std.	143-82-002-00
	Lower Diaphragm Case, Monitor	143-82-002-01
10b	Clamping Plate	143-16-102-00
10c	Roll Pin, 1/8" x 5/8"	904103
11a	Diaphragm	143-82-150-00
	Diaphragm (Viton)	143-82-150-01
11b	Diaphragm Pan	143-82-017-00
11c	Diaphragm Coupling (IRV)	143-16-028-00
11d	Seal Washer	143-16-115-00
11f	Spring Guide	143-16-018-00
11h	Diaphragm Spacer	143-16-079-00
11i	Screw, 5/16"-18 x 1" Hex Hd. Stl.	910030
11k	Spring - IRV, 9" Release	143-82-021-03
	Spring- IRV, 20" Release	143-16-021-02
11m	Relief Valve Guide	143-16-153-00
11n	Diaphragm Coupling (Std.)	143-16-028-01
13	Lever	143-82-030-00
13c	Roll Pin - Lever Weight, 3/16" x 1-1/8" lg.	901699
13d	Roll Pin - Valve Stem, 5/32" x 7/16" lg.	904104
14	Screw, 1/4" x 5/8" Rd. Hd. Self Tap	950353
15	Fulcrum Pin	143-16-032-00
16	Cap Screw, 3/8"-16 x 1-1/4" Hex Hd. Stl.	910056
17	Tetraseal, Lower Case to Body	904075

ILL. NO.	DESCRIPTION	PART NUMBER
20a	Stem	143-16-016-00
	Stem, for Corrosive Service	143-16-016-01
20b	Hair Pin Cotter	143-62-118-00
21	Valve, 10°, Buna-N	143-16-511-09
	Valve, 30°, Buna-N	143-16-511-10
	Valve, 10°, Viton	143-16-511-11
	Valve, 30°, Vton	143-16-511-12
32	Cut-off Body Cap Assembly	143-16-304-00
	Cut-off Body Cap Assembly for Corrosive Service	143-16-304-01
34	Orifice, 1/2"	143-16-023-05
	Orifice, 3/4"	143-16-023-06
	Orifice, 1"	143-16-023-07
	Orifice, 1/2", Stainless Steel	143-16-023-19
	Orifice, 3/4", Stainless Steel	143-16-023-20
	Orifice, 1", Stainless Steel	143-16-023-21
35	Body, 1-1/4" NPT-LPCO	143-12-001-01
	Body, 1-1/2" NPT-LPCO	143-14-001-01
36	Cut-off Valve and Stem Assembly	143-16-516-00
	36a Cut-off Stem	143-16-116-00
	36c Cut-off Valve	143-16-311-00
	36d Cut-off Valve Gasket	143-16-047-00
	36e Cut-off Valve Guide	143-16-012-01
37	Cut-off Valve Spring	143-16-021-09
38	Instruction Tag	143-16-136-03
51	Seal and Wire	001-61-057-07
52	Instruction Tag (Monitor)	138-18-136-00
55a	Exhaust Spring	086-10-021-02
55b	Valve Seat (Washer)	143-16-024-00
55c	Stem Guide	143-16-012-00
55d	Retaining Ring	904013
55e	Valve Assembly	143-16-526-015

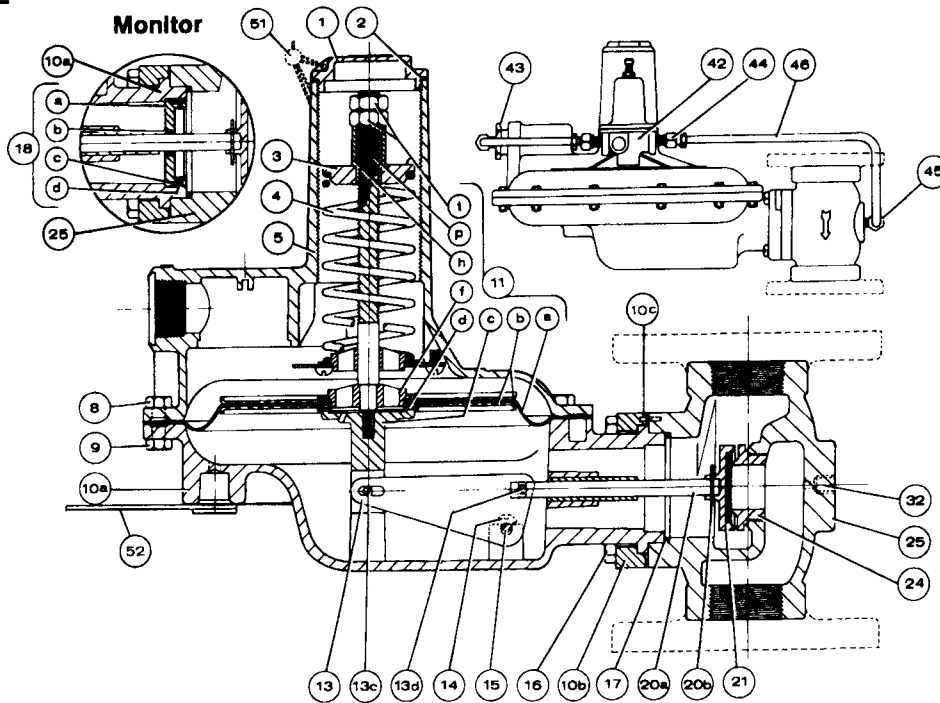
Model 243-8PL
Bleed to
Atmosphere



ILL. NO.	DESCRIPTION	PART NUMBER
1	Seal Cap	143-16-005-00
2	Tetraseal - Seal Cap, 2-1/4" x 2-3/8"	905241
3	Adjustment Spring Button	143-16-009-00
4	Spring, Green-Black	143-82-021-02
5	Upper Diaphragm Case	143-82-003-00
8	Screw, 5/16"-18 x 1" Hex Hd. Stl.	910030
9	Nut, 5/16"-18 Hex Hd. Stl.	920052
10	Lower Diaphragm Case Assembly	
10a	Lower Diaphragm Case, Std.	143-82-002-00
10b	Lower Diaphragm Case, Monitor	143-82-002-01
10c	Clamping Plate	143-16-102-00
10d	Roll Pin, 1/8" x 5/8"	904103
11a	Diaphragm	143-82-150-00
11b	Diaphragm (Viton)	143-82-150-01
11c	Diaphragm Pan	143-82-017-00
11d	Diaphragm Coupling (Std.)	143-16-028-01
11e	Seal Washer	143-16-115-00
11f	Spring Guide	143-16-018-00
11h	Diaphragm Spacer	143-16-079-00
11i	Screw, 5/16"-18 x 1" Hex Hd. Stl.	910030
13	Lever	143-82-030-00
13c	Roll Pin - Lever Weight, 3/16" x 1-1/8" lg.	901699
13d	Roll Pin - Valve Stem, 5/32" x 7/16" lg.	904104
14	Screw, 1/4" x 5/8" Rd. Hd. Self Tap	950352
15	Fulcrum Pin	143-16-032-00
16	Cap Screw, 3/8"-16 x 1-1/4" Hex Hd. Stl.	910056
17	Tetraseal, Lower Case to Body	904075
18	Seal Disc Assembly - Monitor	143-16-508-00
18a	Seal Disc, CRS cad. plated	143-16-008-00
18b	Inner O-Ring	934007
18c	Outer O-Ring	905809
18d	Set Screw, #6-32 x 1/4" Hex Soc. Cup Pt.	903197
	Seal Disc Assembly - Monitor for Corrosive Service	143-16-508-01
18a	Seal Disc, CRS cad. plated	143-16-008-00
18b	Inner O-ring, Viton	902418
18c	Outer O-ring, Viton	904842
18d	Set Screw, #6-32 x 1/4" Hex. Soc. Cup Pt.	903197

ILL. NO.	DESCRIPTION	PART NUMBER
20a	Stem	143-16-016-00
20b	Stem, for Corrosive Service	143-16-016-01
21	Hair Pin Cotter	143-62-118-00
21	Valve, 10°, Buna-N	143-16-511-09
21	Valve, 30°, Buna-N	143-16-511-10
21	Valve, 10°, Viton	143-16-511-11
21	Valve, 30°, Viton	143-16-511-12
24	Orifice, 1/4"	143-16-023-10
24	Orifice, 3/8"	143-16-023-04
24	Orifice, 1/2"	143-16-023-00
24	Orifice, 3/4"	143-16-023-01
24	Orifice, 1"	143-16-023-02
24	Orifice, 1/4", Stainless Steel	143-16-023-15
24	Orifice, 3/8", Stainless Steel	143-16-023-16
24	Orifice, 1/2", Stainless Steel	143-16-023-17
24	Orifice, 3/4", Stainless Steel	143-16-023-12
24	Orifice, 1", Stainless Steel	143-16-023-13
24	Body, 1-1/4" NPT - 1/4" Inlet Tap	143-12-001-02
24	Body, 1-1/2" NPT - 1/4" Inlet Tap	143-14-001-02
24	Body, 2" NPT - 1/4" Inlet Tap	143-16-001-04
24	Body, 2" Flanged - 1/4" Inlet Tap	143-16-001-05
32	1/4" Soc. Hd. Stl. Pipe Plug	904364
42	Pressure Loading Regulator, 3-20 PSI	1191495
42	Pressure Loading Regulator, 5-35 PSI	1191496
43	Bushing, 1" x 1/4", Hex. M.I.	904397
44	Imperial Hi-Duty Connector, 3/8" T-1/4" P	903973
45	Imperial Hi-Duty E11, 3/8" T-1/4" P	903989
46	23-1/2" of 3/8" O.D. J.I.C. Hyd. Std. Weld Stl. Tubing	51125
51	Seal and Wire	001-61-057-07
52	Instruction Tag (Monitor)	138-18-136-00

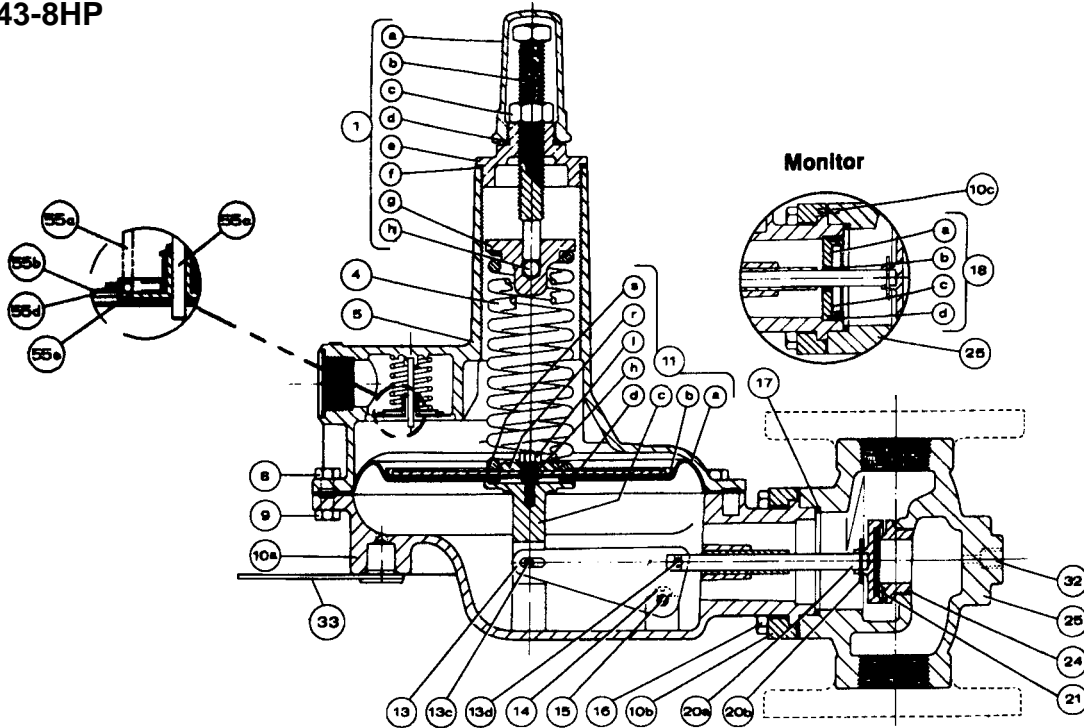
Model 243-8PL
Bleed to
Line



ILL. NO.	DESCRIPTION	PART NUMBER
1	Seal Cap	143-16-005-00
2	Tetraseal - Seal Cap 2-1/4" x 2-3/8"	905241
3	Adjustment Spring Button	143-16-009-01
4	Spring, Green	143-16-021-05
5	Upper Diaphragm Case	143-82-503-14
8	Screw, 5/16" -18 x 1" Hex Hd. Stl.	910030
9	Nut, 5/16"-18 Hex Hd. Stl.	920052
10	Lower Diaphragm Case Assembly	
10a	Lower Diaphragm Case, Std.	143-82-002-00
	Lower Diaphragm Case, Monitor	143-82-002-01
10b	Clamping Plate	143-16-102-00
10c	Roll Pin, 1/8" x 5/8"	904103
11a	Diaphragm	143-82-150-00
	Diaphragm (Viton)	143-82-150-01
11b	Diaphragm Pan	143-82-017-00
11c	Diaphragm Coupling	143-16-028-02
11d	Seal Washer	143-16-115-00
11f	Spring Guide	143-16-018-00
11h	Spacer	015-16-012-70
11p	Diaphragm Stem Extension	143-16-062-00
11t	Jam Nut, 1/2 - 20 Hex Hd. Stl.	922204
13	Lever	143-82-030-00
13c	Roll Pin - Lever Weight, 3/16" x 1-1/8"	906199
13d	Roll Pin - Valve Stem	904104
14	Screw, 1/4" x 5/8" Rd. Hd. Self Tap	950353
15	Fulcrum Pin	143-16-032-00
16	Cap Screw, 3/8"-16 x 1-1/4" Hex Hd. Stl.	910056
17	Tetraseal, Lower Case to Body	904075
18	Seal Disc Assembly - Monitor	143-16-508-00
18a	Seal Disc, CRS cad. plated	143-16-008-00
18b	Inner O-ring	934007
18c	Outer O-ring	905809
18d	Set Screw, #6-32 x 1/4" Hex Soc. Cup Pt.	903197
	Seal Disc Assembly -	
	Monitor for Corrosive Service	143-16-508-01
18a	Seal Disc, CRS cad. plated	143-16-008-00
18b	Inner O-ring, Viton	902418
18c	Outer O-ring, Viton	904842
18d	Set Screw, #6-32 x 1/4" Hex Soc. Cup Pt.	903197

ILL. NO.	DESCRIPTION	PART NUMBER
20a	Stem	143-16-016-00
	Stem, for Corrosive Service	143-16-016-01
20b	Hair Pin Cotter	143-62-118-00
21	Valve, 10°, Buna-N	143-16-511-09
	Valve, 30°, Buna-N	143-16-511-10
	Valve, 10°, Viton	143-16-511-11
	Valve, 30°, Viton	143-16-511-12
24	Orifice, 1/4"	143-16-023-10
	Orifice, 3/8"	143-16-023-04
	Orifice, 1/2"	143-16-023-00
	Orifice, 3/4"	143-16-023-01
	Orifice, 1"	143-16-023-02
	Orifice, 1/4", Stainless Steel	143-16-023-15
	Orifice, 3/8", Stainless Steel	143-16-023-14
	Orifice, 1/2", Stainless Steel	143-16-023-17
	Orifice, 3/4", Stainless Steel	143-16-023-12
	Orifice, 1", Stainless Steel	143-16-023-13
25	Body, 1-1/4" NPT - 1/4" Inlet Tap	143-12-001-02
	Body, 1-1/2" NPT - 1/4" Inlet Tap	143-14-001-02
	Body, 2" NPT - 1/4" Inlet Tap	143-16-001-04
	Body, 2" Flanged - 1/4" Inlet Tap	143-16-001-05
42	Pressure Loading Regulator, 3-20 PSI	990018
	Pressure Loading Regulator, 5-35 PSI	990019
43	Bushing, 1" x 1/4", Hex M.I.	904397
44	Imperial Hi-Duty Connector, 3/8" T-1/4" P	903973
45	Imperial Hi-Duty E11, 3/8" T-1/4" P	903989
46	23-1/2" of 3/8" O.D. J.I.C. Hyd. Std. Weld Stl. Tubing	51125
51	Seal and Wire	001-61-057-07
52	Instruction Tag (Monitor)	138-18-136-00

Model 243-8HP



ILL. NO.	DESCRIPTION	PART NUMBER
1	Seal Cap and Spring Adjustment Assembly	
1a	Seal Cap	121-10-005-52
1b	Adjustment Screw	906537
1c	Nut	921005
1d	Tetraseal, Seal Cap, 1-1/2" x 1-5/8"	906534
1e	Top Cap	121-10-005-51
1f	Tetraseal, Top Cap, 2-1/4" x 2-3/8"	905241
1g	Spring Button	121-10-009-51
1h	3/8" Dia. Stainless Steel Ball	930510
4	Spring, 3 to 6-1/2 psi, Cadmium (Outer)	143-16-021-08
	Spring, White	143-16-021-13
5	Upper Diaphragm Case Assembly	143-82-503-12
8	Screw, 5/16"-18 x 1" Hex Hd. Stl.	910030
9	Nuts, 5/16"-18 Hex Hd. Stl.	908152
10	Lower Diaphragm Case Assembly	
10a	Lower Diaphragm Case, Std.	143-82-002-00
	Lower Diaphragm Case, Monitor	143-82-002-01
10b	Clamping Plate	143-16-102-00
10c	Roll Pin, 1/8" x 5/8"	904103
11a	Diaphragm	121-10-150-50
	Diaphragm (Viton)	121-10-150-52
11b	Diaphragm Pan	121-10-017-50
11c	Diaphragm Coupling (Std.)	143-16-028-01
11d	Emery Cloth Washer	143-82-178-00
11h	Diaphragm Spacer	143-82-079-00
11l	Screw, 5/16"-18 x 1" Hex Hd. Stl.	910030
11r	Bottom Spring Button	121-10-022-53
11s	Diaphragm Plate	121-10-022-52
13	Lever	143-82-030-00
13c	Roll Pin - Lever Weight, 3/16" x 3/4" lg.	904106
13d	Roll Pin - Valve Stem, 5/32" x 7/16" lg.	904104
14	Screw, 1/4" x 5/8" Rd. Hd. Self Tap	950353
15	Fulcrum Pin	143-16-032-00
16	Cap Screw, 3/8"-16 x 1-1/4" Hex Hd. Stl.	901551
17	Tetraseal, Lower Case to Body	904075

ILL. NO.	DESCRIPTION	PART NUMBER
18	Seal Disc Assembly - Monitor	143-16-508-00
18a	Seal Disc, CRS cad. plated	143-16-008-00
18b	Inner O-ring	934007
18c	Outer O-ring	905809
18d	Set Screw, #6-32 x 1/4" Hex Soc. Cup Pt.	903197
	Seal Disc Assembly - Monitor for Corrosive Service	143-16-508-01
18a	Seal Disc, CRS cad. plated	143-16-008-00
18b	Inner O-ring, Viton	902418
18c	Outer O-ring, Viton	904842
18d	Set Screw, #6-32 x 1/4" Hex Soc. Cup Pt.	903197
20a	Stem	143-16-016-00
	Stem, for Corrosive Service	143-16-016-01
20b	Hair Pin Cotter	143-16-118-00
21	Valve, 10°, Buna-N	143-16-511-09
	Valve, 30°, Buna-N	143-16-511-10
	Valve, 10°, Viton	143-16-511-11
	Valve, 30°, Viton	143-16-511-12
24	Orifice, 1/4"	143-16-023-10
	Orifice, (.203)	143-16-023-11
	Orifice, 3/8"	143-16-023-04
	Orifice, 1/2"	143-16-023-00
	Orifice, 3/4"	143-16-023-01
	Orifice, 1"	143-16-023-02
	Orifice, 1/4", Stainless Steel	143-16-023-15
	Orifice, (.203), Stainless Steel	143-16-023-18
	Orifice, 3/8", Stainless Steel	143-16-023-16
	Orifice, 1/2", Stainless Steel	143-16-023-17
	Orifice, 3/4", Stainless Steel	143-16-023-12
	Orifice, 1", Stainless Steel	143-16-023-13
25	Body, 1-1/4" NPT - Std.	143-13-001-00
	Body, 1-1/4" NPT - 1/4" Inlet Tap	143-13-001-02
	Body, 1-1/4" NPT Inlet - 1-1/2" NPT Outlet	143-13-001-00
	Body, 1-1/2" NPT - Std.	143-14-001-00
	Body, 1-1/2" NPT - 1/4" Inlet Tap	143-14-001-02
	Body, 2" NPT - Std.	143-16-001-00
	Body, 2" NPT - 1/4" Inlet Tap	143-16-001-04
	Body, 2" Flanged - Std.	143-16-001-03
	Body, 2" Flanged, 1/4" Inlet Tap	143-16-001-05
	1/4" Soc. Hd. Stl. Pipe Plug	904364
32	Instruction Tag (Monitor)	138-18-136-00
33	Exhaust Spring	086-10-021-02
55a	Valve Seat (Washer)	143-16-024-00
55b	Stem Guide	143-16-012-00
55c	Retaining Ring	904013
55d	Valve Assembly	143-16-526-01